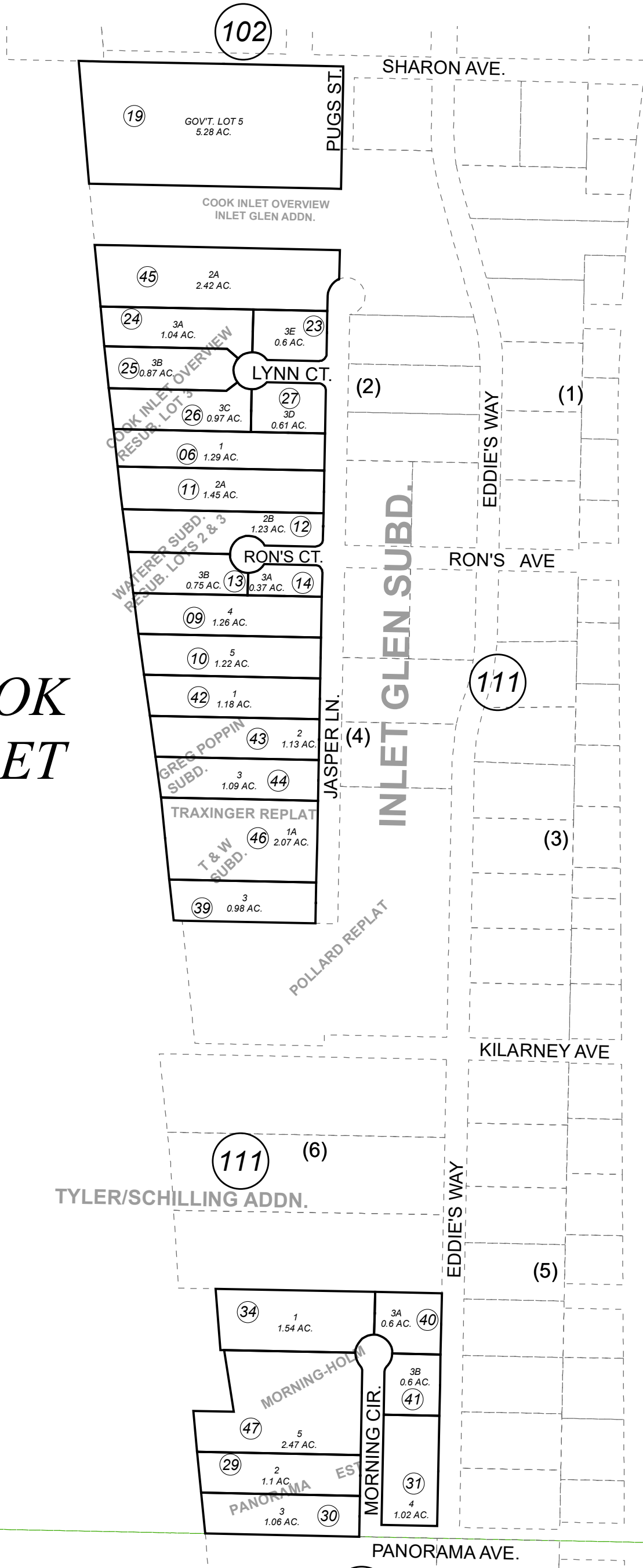


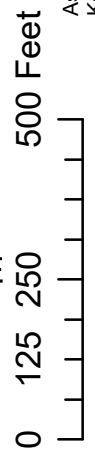
017-110

POR. SEC. 14, T06N, R12W, S.M.

COOK INLET



- WATERER SUB KN0720045
- WATERER SUB RESUB OF LOTS 2 & 3 BLOCK 1 KN0740078
- COOK INLET OVERVIEW SUB RESUB OF LOT 3 KN0780069
- PANORAMA ESTATES SUB KN0800080
- MORNING-HOLM SUB KN0820051
- T & W SUB KN0830021
- MORNING-HOLM SUB KN0830069
- MORNING-HOLM SUB NO 2 KN0830069
- GREG POPPIN SUB KN0840124
- COOK INLET OVERVIEW SUBD INLET GLEN ADDN KN0950085
- T & W SUB TRAXINGER ADDN. KN2004029
- MORNING PANORAMA SUB RICHEY REPLAT KN2019009



MAY 30, 2019	
For 2020 assessment roll	
Delete	Add
28,35	47
To	To

This map is prepared for Kenai Peninsula Borough Assessing Dept. use only and is not intended for conveyance nor is it a survey.

Assessor's block Numbers Shown in Ellipses
Assessor's Parcel Numbers Shown in Circles

Assessor's Map
Kenai Peninsula Borough

120

111

111

102