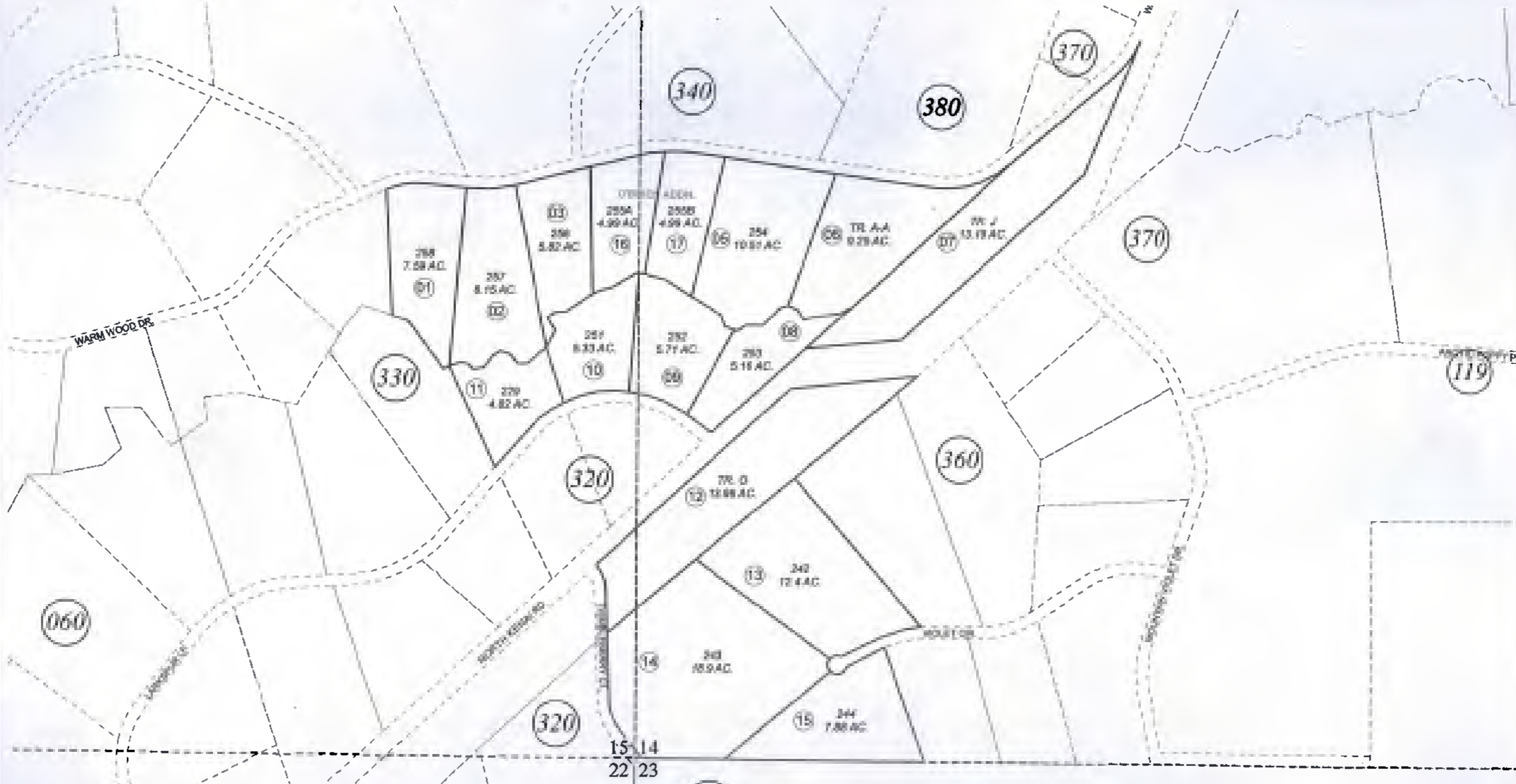


POR. SEC. 14 & 15, T09N, R09W, S.M.

025-350



DECEMBER 1, 2008

For 2009 assessment roll		
Delete	Add	Revise
To		
4	16,17	



Assessor's Map  
Kenai Peninsula Borough

GRAY CLIFF SUB KN0820080  
GRAY CLIFF SUB O'BRIEN ADDN KN2008119

This map is prepared for Kenai Peninsula Borough Assessing Dept. use only and is not intended for conveyance nor is it a survey.

Note- Assessor's block Numbers Shown in Ellipses  
Assessor's Parcel Numbers Shown in Circles