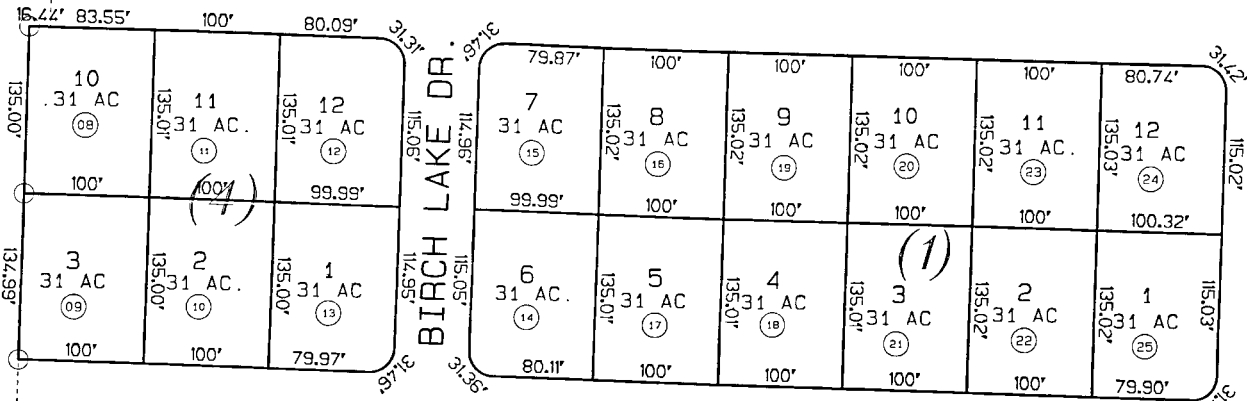


E1/2 NE1/4 SE1/4 SEC. 1, T7N, R12W, SEWARD MERIDIAN

012-400

BIRCH LAKE HILLS SUBD. NO. 2

LAKE ST.



36

30

BIRCH LAKE HILLS SUBD. NO. 3

SEC. 1
SEC. 6

MARHENKE ST.

13
18

DATE JAN 9, 1996

FOR 19 96 ASSESSMENT ROLL
DELETE ADD REVISED
TO
1-7, 01213070
27

Assessor's Map
Kenai Peninsula Borough

BIRCH LAKE HILLS KN800027
BIRCH LAKE HILLS NO 2 KN800112
BIRCH LAKE HILLS NO 3 KN850062

THIS MAP IS PREPARED
FOR KENAI PENINSULA
BOROUGH ASSESSING DEPT
USE ONLY AND IS NOT
INTENDED FOR ANY
OTHER USE OR REPRESENTATION

NOTE - Assessor's Block Numbers Shown in Ellipses
Assessor's Parcel Numbers Shown in Circles