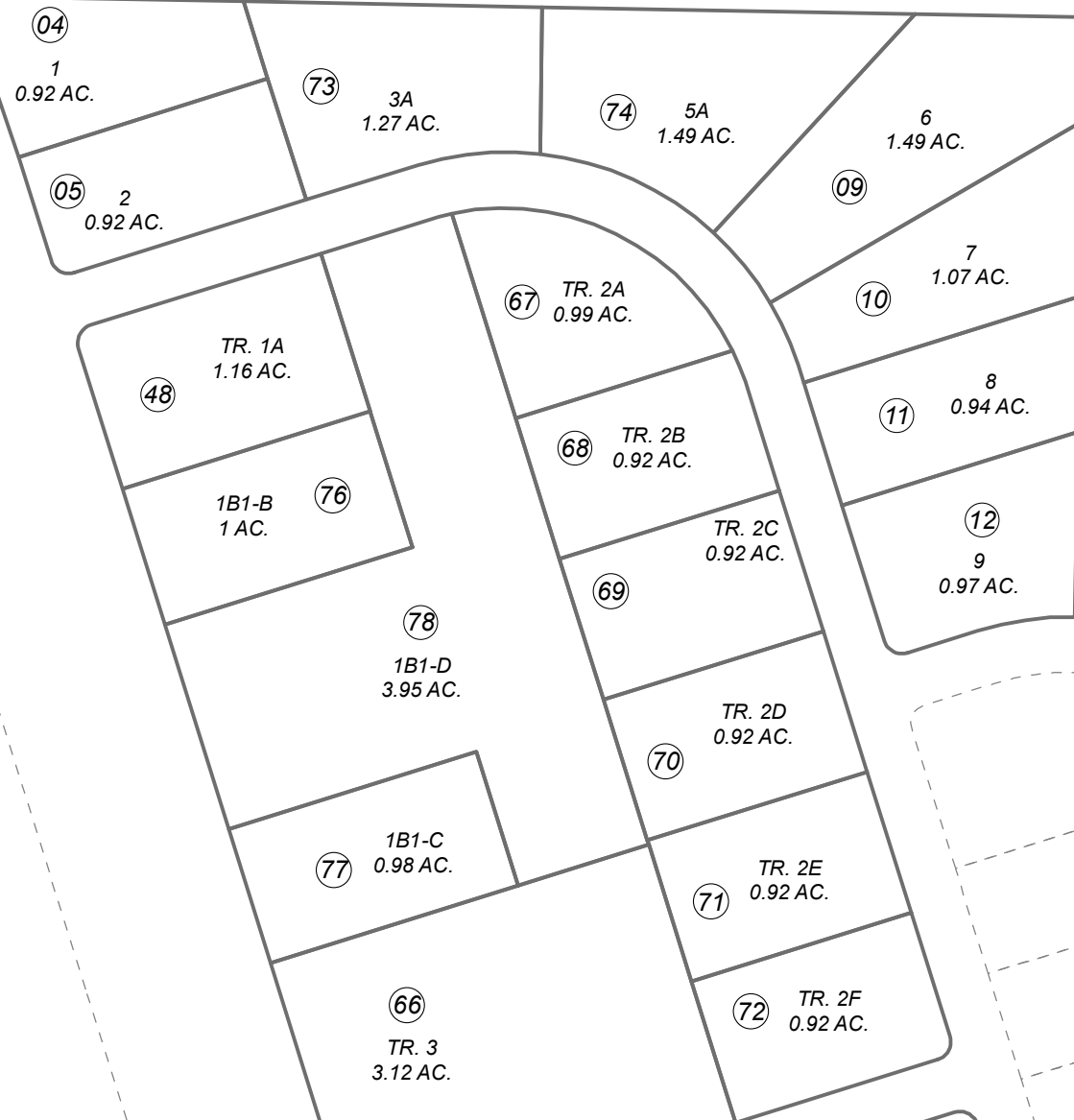


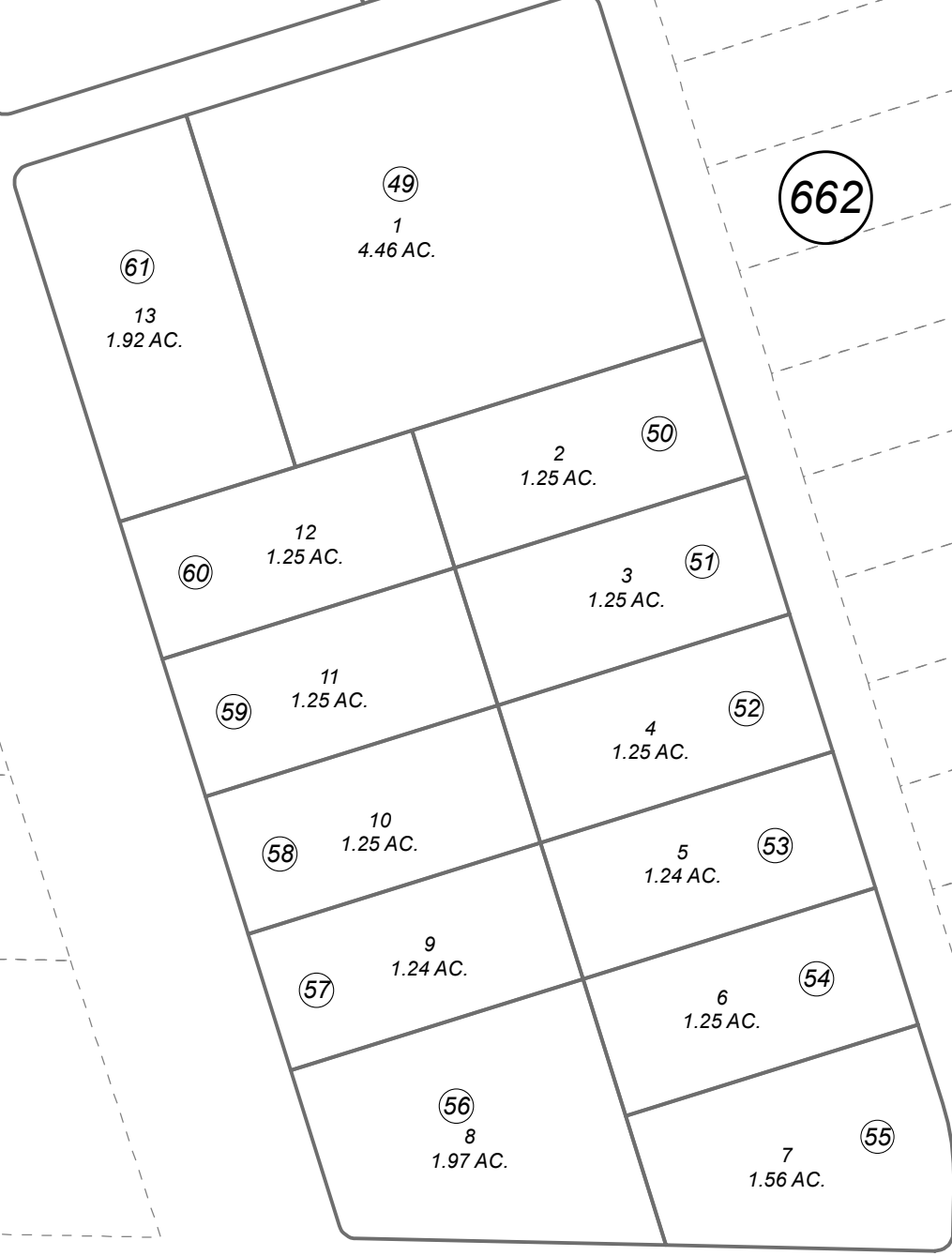
055-661

POR. SE 1/4 SEC. 26, T05N, R11W, S.M.

072



150



662

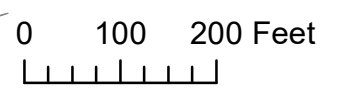
160

This map is prepared for Kenai Peninsula Borough Assessing Dept. use only and is not intended for conveyance nor is it a survey.

Note- Assessor's block Numbers Shown in Ellipses Assessor's Parcel Numbers Shown in Circles

- K-B SUB PART 3 KN0840029
- K-B SUB PART 4 KN0850034
- K-B SUB PART 6 KN0870053
- K-B SUB PART 7 KN0940074
- K-B SUB PART EIGHT KN0970106
- K-B SUB PART NINE KN2002018
- K-B SUB PART TEN KN2006040
- K-B SUB PART ELEVEN KN2011013
- K-B SUB PART TWELVE KN2011034
- K-B SUB PART THIRTEEN KN2022068

Assessor's Map Kenai Peninsula Borough



NOVEMBER 14, 2022

For 2023 assessment roll	
Delete	Add / Revise
75	77,78