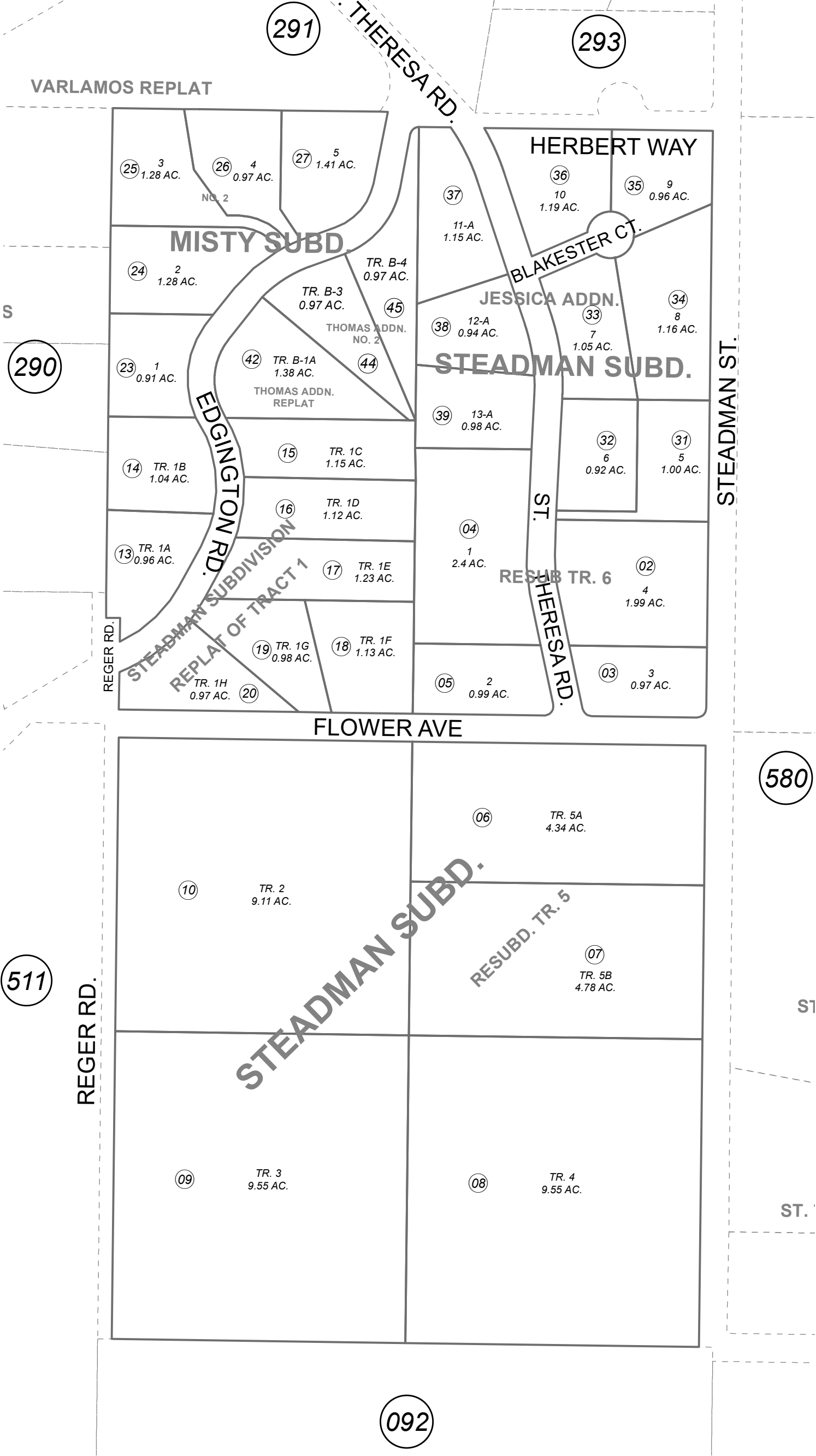
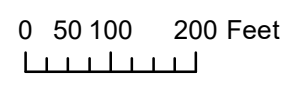


063-670

SW 1/4 NE 1/4 & NW 1/4 SE 1/4 SEC. 20, T05N, R09W, S.M.



JUNE 5, 2020	
For 2021 assessment roll	
Delete	Revise
Add	
To	43 44,45



STEADMAN SUB KN0750045
 STEADMAN RESUB TRACT 5 KN0780172
 STEADMAN RESUB TRACT 6 KN0780204
 STEADMAN SUB REPLAT OF TR 1 KN0830024
 MISTY SUB KN0870106
 MISTY SUB NO 2 KN0960087
 STEADMAN SUB JESSICA ADDN KN2005073
 STEADMAN SUB JESSICA ADDN NO 1 KN2008007
 MISTY SUB THOMAS ADDN KN2012085
 MISTY SUB THOMAS ADDN REPLAT KN2017082
 MISTY SUB THOMAS ADDN NO 2 KN2020026

Assessor's Map
 Kenal Peninsula Borough

This map is prepared
 for Kenal Peninsula
 Borough Assessing Dept.
 use only and is not
 intended for conveyance
 nor is it a survey.

Note- Assessor's block Numbers Shown in Ellipses
 Assessor's Parcel Numbers Shown in Circles