

TORWICK ADDN.

140

BOLSTRIDGE KENAI RIVER SUBDIVISION

BAER ADDN.

COMFORTABLE ST.

HUSKE

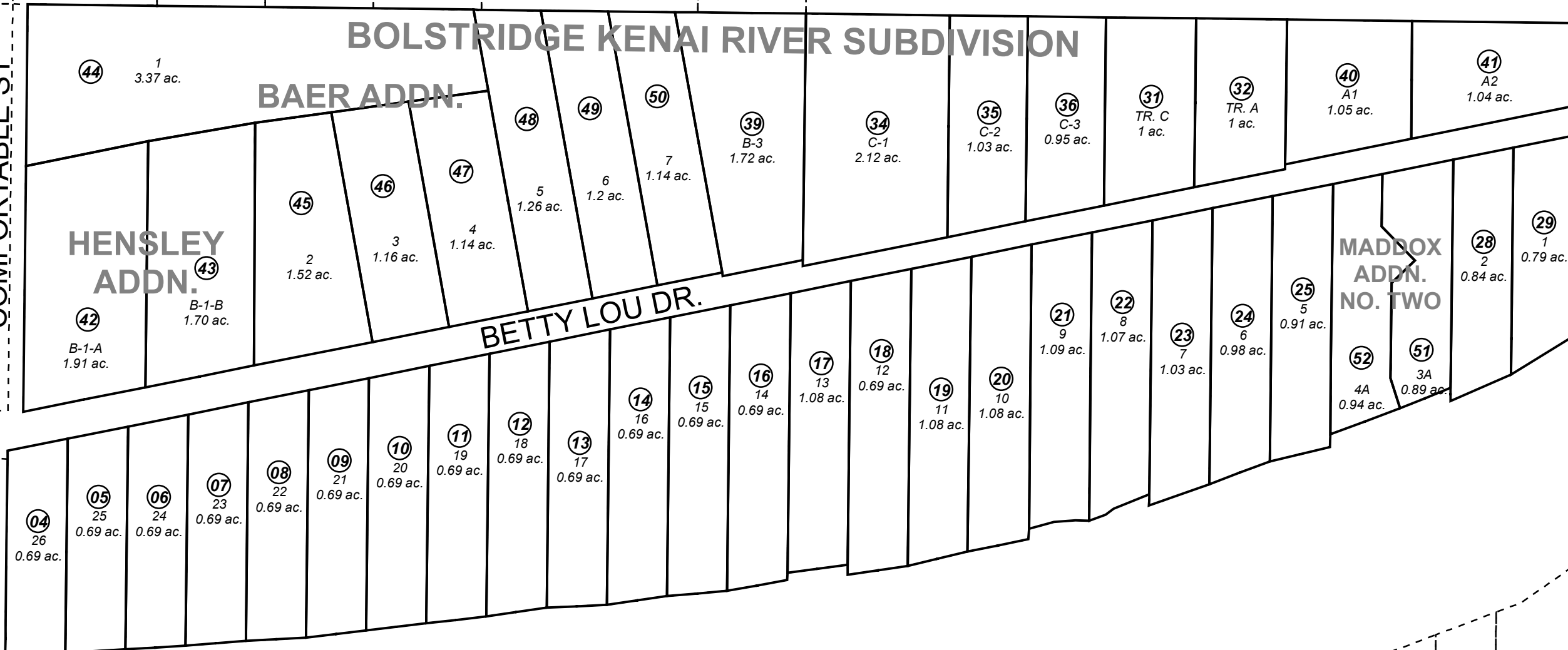
HENSLEY ADDN.

MADDOX ADDN. NO. TWO

BETTY LOU DR.

140

140



KENAITZE ESTATES

Kenai River

(1)

BK 066

AUGUST 23, 2018

For 2019 assessment roll		
Delete	Add	Revise
To		

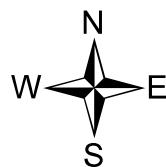
34-36, 39 (LOT LABEL CORRECTION)

Assessor's Map Kenai Peninsula Borough

BOLSTRIDGE KENAI RIVER SUB KN0001129
 BOLSTRIDGE KENAI RIVER RESUB OF TRACT C KN0780129
 BOLSTRIDGE KENAI RIVER RESUB OF TRACT B KN0780194
 BOLSTRIDGE KENAI RIVER SUB MADDOX ADDN KN2001051
 BOLSTRIDGE KENAI RIVER SUB HENSLEY ADDN KN2002031
 RECORD OF SURVEY LOT 13 BOLSTRIDGE KENAI RIVER SUB KN2008023RS
 BOLSTRIDGE KENAI RIVER SUB BAER ADDN KN2009042
 BOLSTRIDGE KENAI RIVER SUB MADDOX ADDN NO TWO KN2009069
 R/S LOTS 8 & 9 BOLSTRIDGE KENAI RIVER SUB KN2018039

This map is prepared for Kenai Peninsula Borough Assessing Dept. use only and is not intended for conveyance nor is it a survey.

Note- Assessor's block Numbers Shown in Ellipses Assessor's Parcel Numbers Shown in Circles



0 100 200 Feet