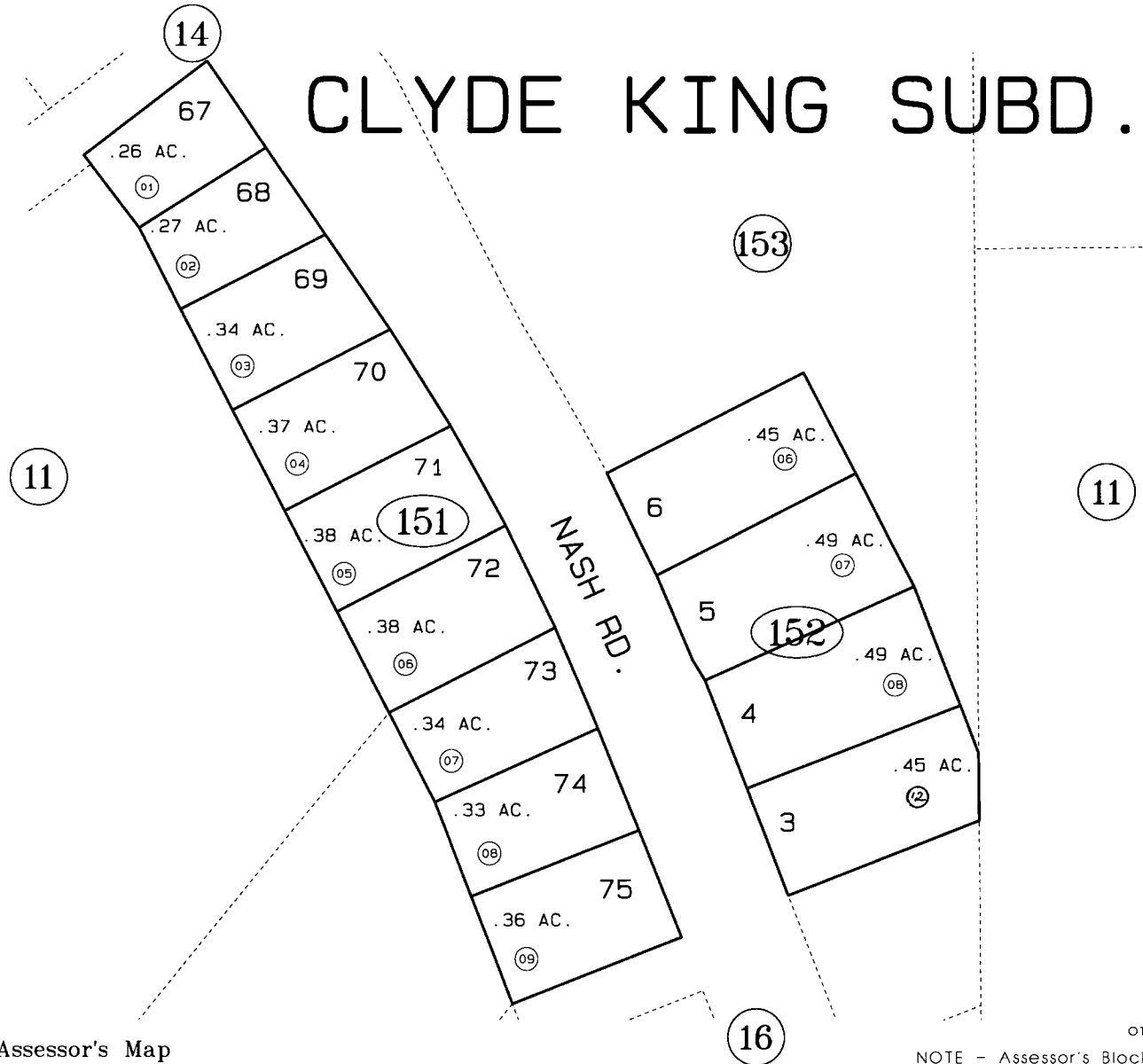


CLYDE KING SUBD.



Assessor's Map
Kenai Peninsula Borough

CLYDE KING SUB SW000020

NOTE - Assessor's Block Numbers Shown In Ellipses
Assessor's Parcel Numbers Shown In Circles

DATE: NOV. 14, 1996

FOR 1997 ASSESSMENT ROLL

DELETE	ADD	REVISED
1-5	TO	
13	14515399	

