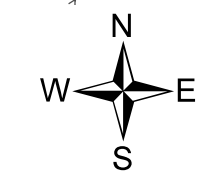
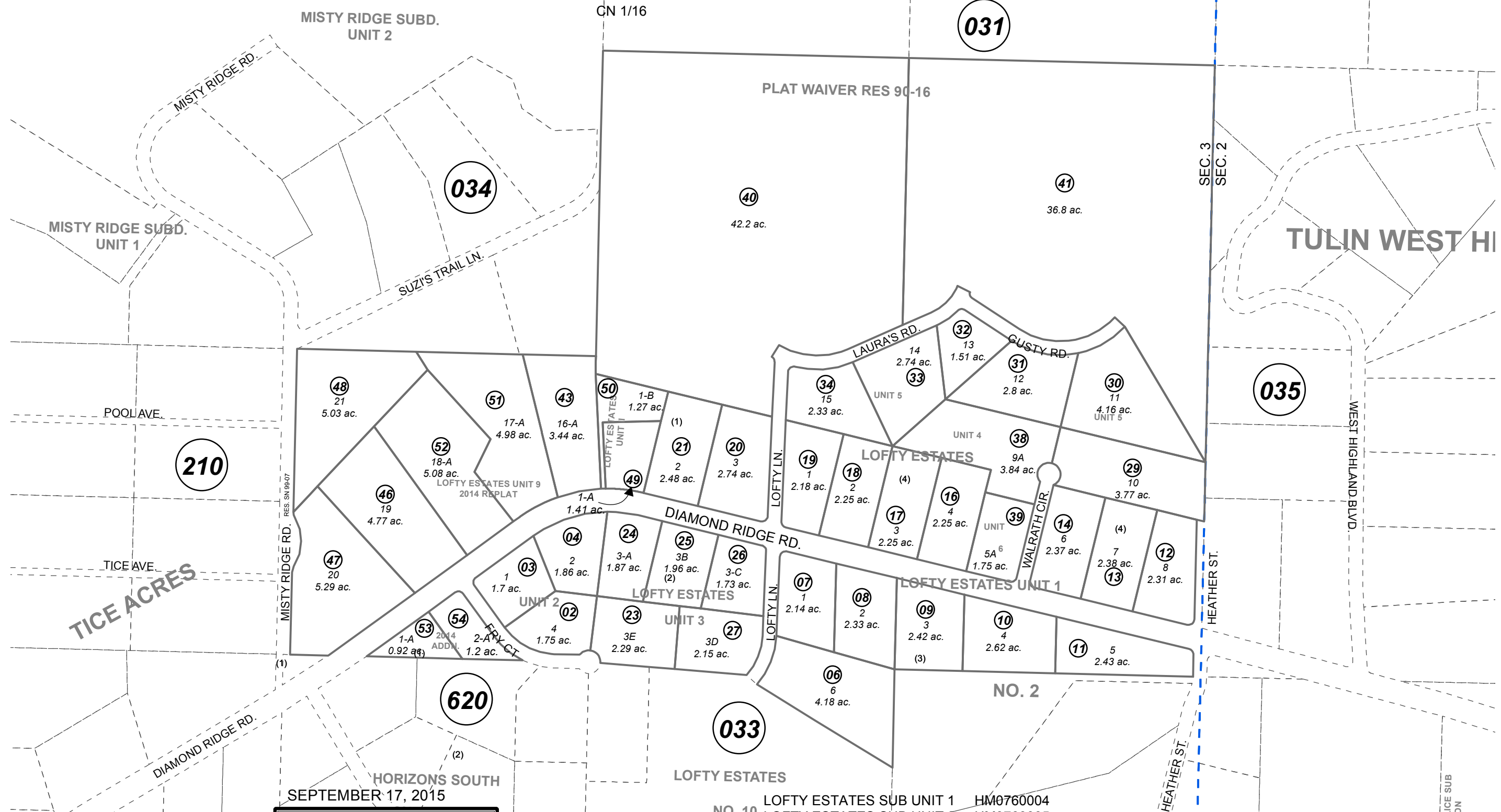


POR. SEC. 3, T06S, R14W, S.M.

173-530



0 200 400 Feet

For 2016 assessment roll		
Delete	Add	Revise
To		
01	53,54	

Assessor's Map
Kenai Peninsula Borough

- NO. 10 LOFTY ESTATES SUB UNIT 1 HM0760004
- LOFTY ESTATES SUB UNIT 2 HM0760005
- LOFTY ESTATES SUB UNIT 3 HM0770035
- LOFTY ESTATES SUB UNIT 4 HM790010
- LOFTY ESTATES SUB UNIT 5 HM0840056
- LOFTY ESTATES SUB UNIT 6 HM0870038
- LOFTY ESTATES SUB UNIT 9 HM2001028
- LOFTY ESTATES SUB UNIT II HM2009007
- LOFTY ESTATES UNIT 9 2014 REPLAT HM2014045
- LOFTY ESTATES SUB UNIT 2 2014 ADDN HM2015021

Note- Assessor's block Numbers Shown in Elipses
Assessor's Parcel Numbers Shown in Circles

This map is prepared for Kenai Peninsula Borough Assessing Dept. use only and is not intended for conveyance nor is it a survey.