

POR. N1/2 SE1/4 SEC. 35, T1S, R14W, S.M.

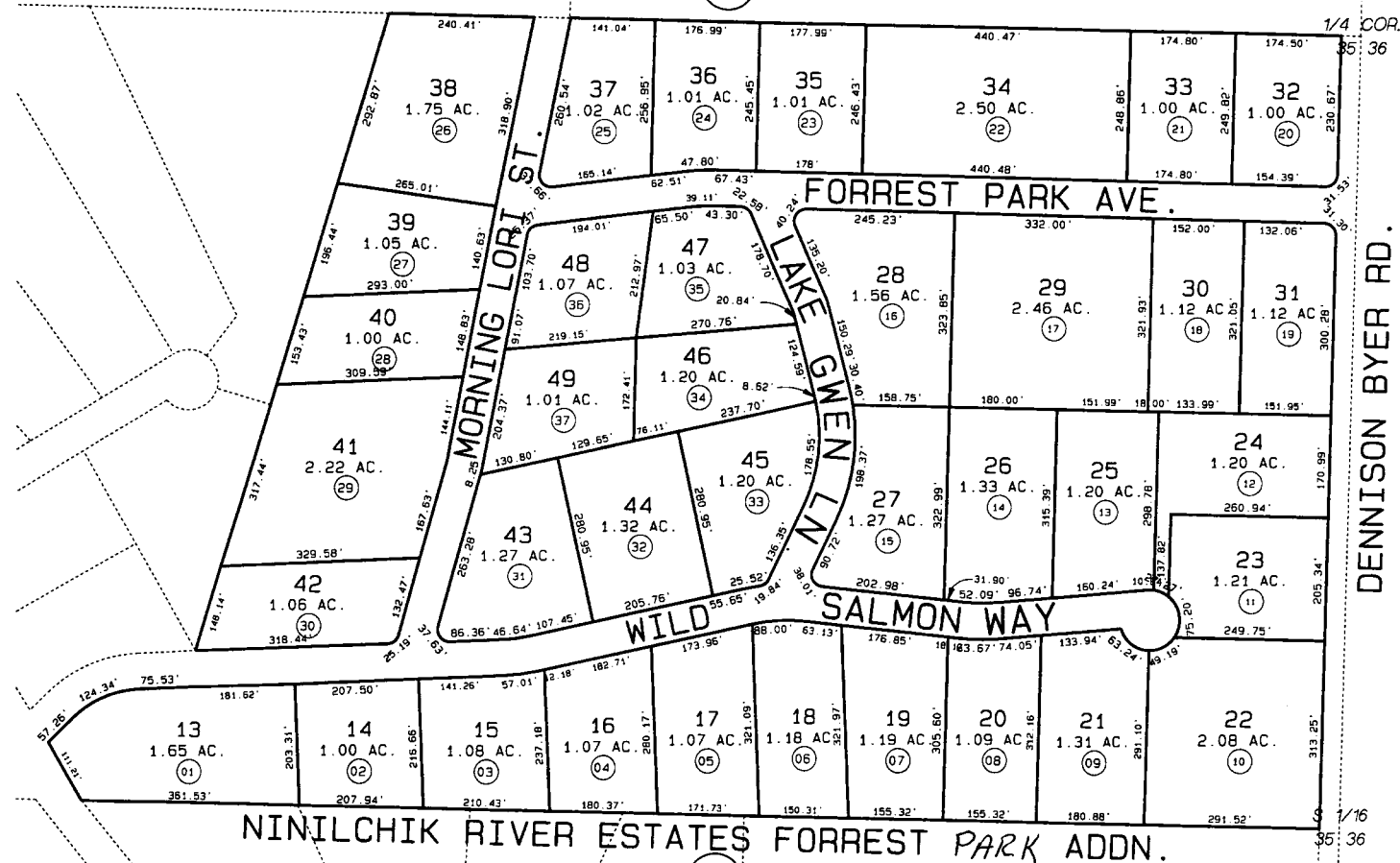
157-064

062

063

062

063



DATE: OCT. 6, 1998
 FOR 1999 ASSESSMENT ROLL
 DELETE ADD REVISED
 TO NEW PAGE

8-3-2001
 PAGE AMENDED

Assessor's Map
 Kenai Peninsula Borough

NINILCHIK RIVER ESTATES FORREST PARK ADDN. HM980042
 AMENDED HM2000054

NOTE - Assessor's Block Numbers Shown in Ellipses
 Assessor's Parcel Numbers Shown in Circles
 THIS MAP IS PREPARED FOR KENAI PENINSULA BOROUGH ASSESSING DEPT USE ONLY AND IS NOT INTENDED FOR ANY OTHER USE OR REPRESENTATION

