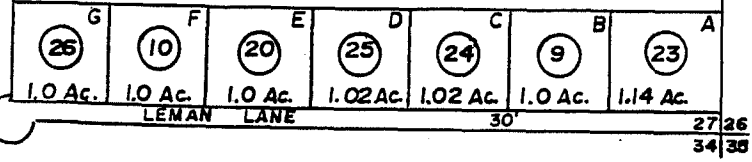


JOE LEMAN TRACTS

TRACTS B, F 72-1411
TRACT E '75 ADDN. 76-1
TRACTS A, C, D & G '77 ADDN. 77-50



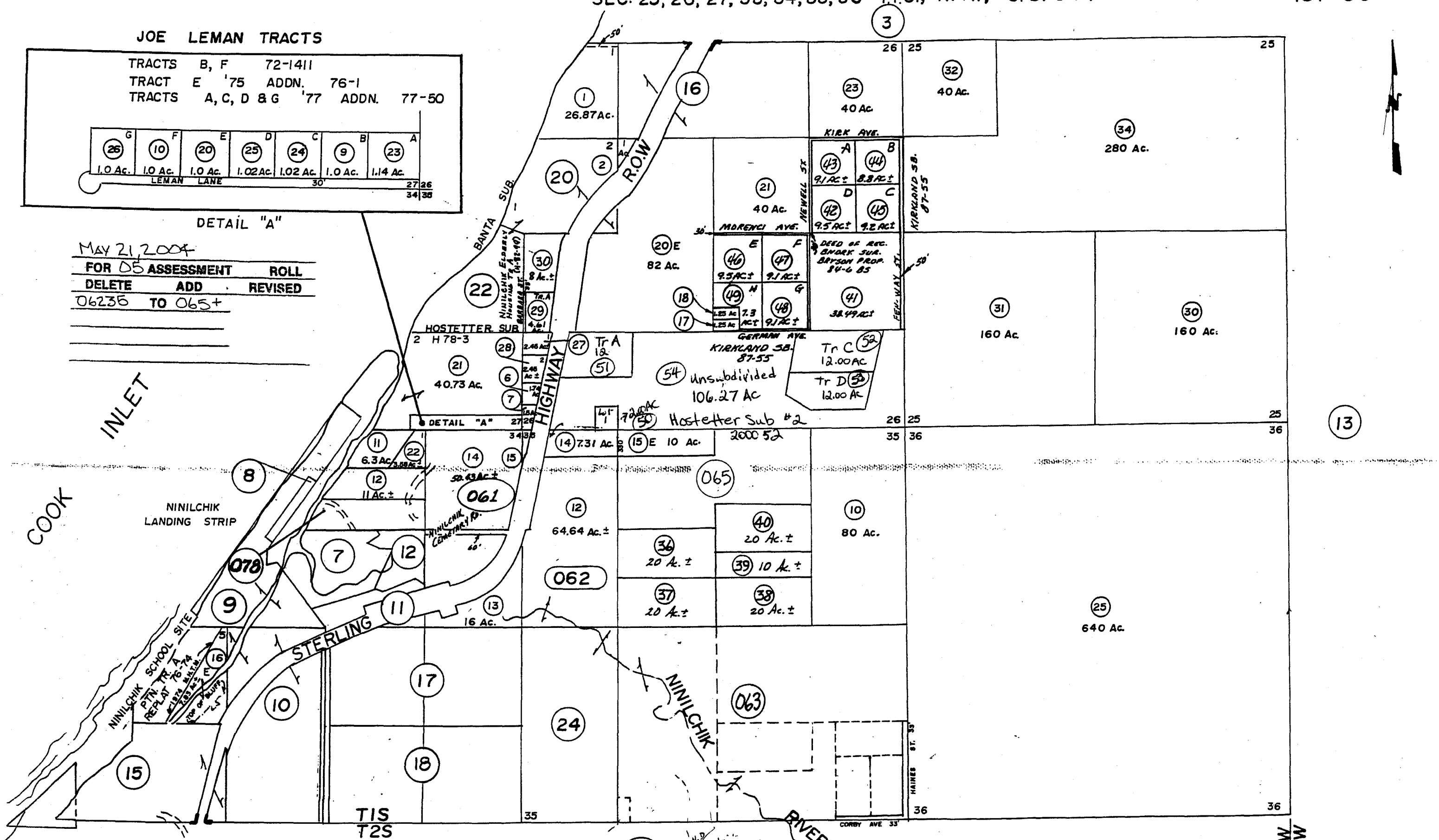
DETAIL "A"

MAY 21, 2004

FOR 05 ASSESSMENT ROLL

DELETE ADD REVISED

06236 TO 065+



NINILCHIK LANDING STRIP

NINILCHIK SCHOOL SITE

TIS T2S

BK 159

OLD OILWELL ROAD PER ABRIAL PHOTO & ADD PLATS

Assessor's Map Kenai Peninsula Borough, Alaska

NOTE - Assessor's Block Numbers Shown in Ellipses