

POR. SEC. 26 & 27, T05N, R03W, S.M.

119-150

SEC. 27
SEC. 26

127

U.S.S. 2688

14
4.51 AC. 06

15
3.84 AC. 07

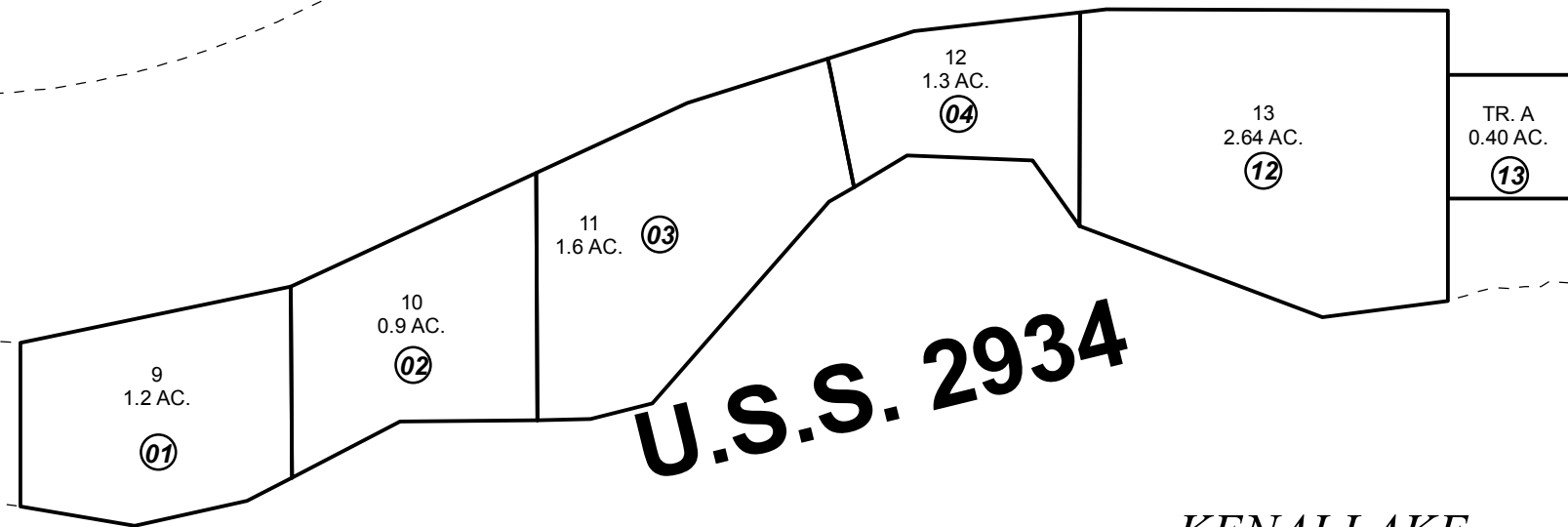
STERLING HWY

126

A.S.L.S. 80-103

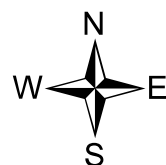
U.S.S. 2934

KENAI LAKE



JULY 21, 2017

For 2018 assessment roll		
Delete	Add	Revise
	To	
09	12,13	



0 45 90 180 Feet

Assessor's Map
Kenai Peninsula Borough

SW0002934 SLAUGHTER CREEK GROUP U S SURVEY 2934
SW0002688 SLAUGHTER CREEK GROUP U S SURVEY 2688
SW0820019 ALASKA STATE LAND SURVEY 80-103

This map is prepared for Kenai Peninsula Borough Assessing Dept. use only and is not intended for conveyance nor is it a survey.

Note- Assessor's block Numbers Shown in Elipses
Assessor's Parcel Numbers Shown in Circles