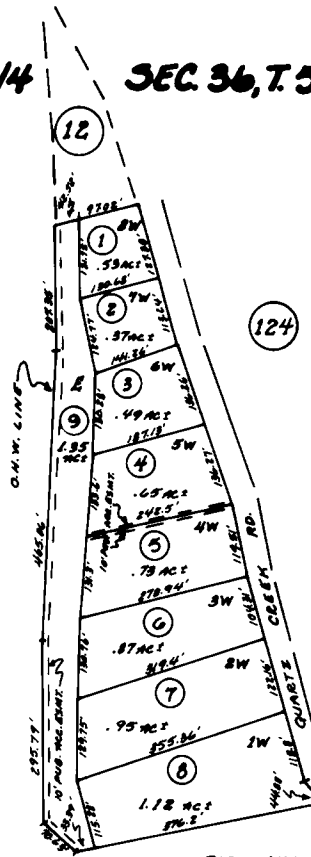


PORTION NW 1/4 SEC. 36, T. 5N, R. 3W, S.M.

KENAI LAKE



ASLS 85-339  
WEST QUARTZ CREEK UNIT  
87-3

Assessor's Map  
Kenai Peninsula Borough, Alaska

NOTE - Assessor's Block Numbers Shown in Ellipses  
Assessor's Parcel Numbers Shown in Circles