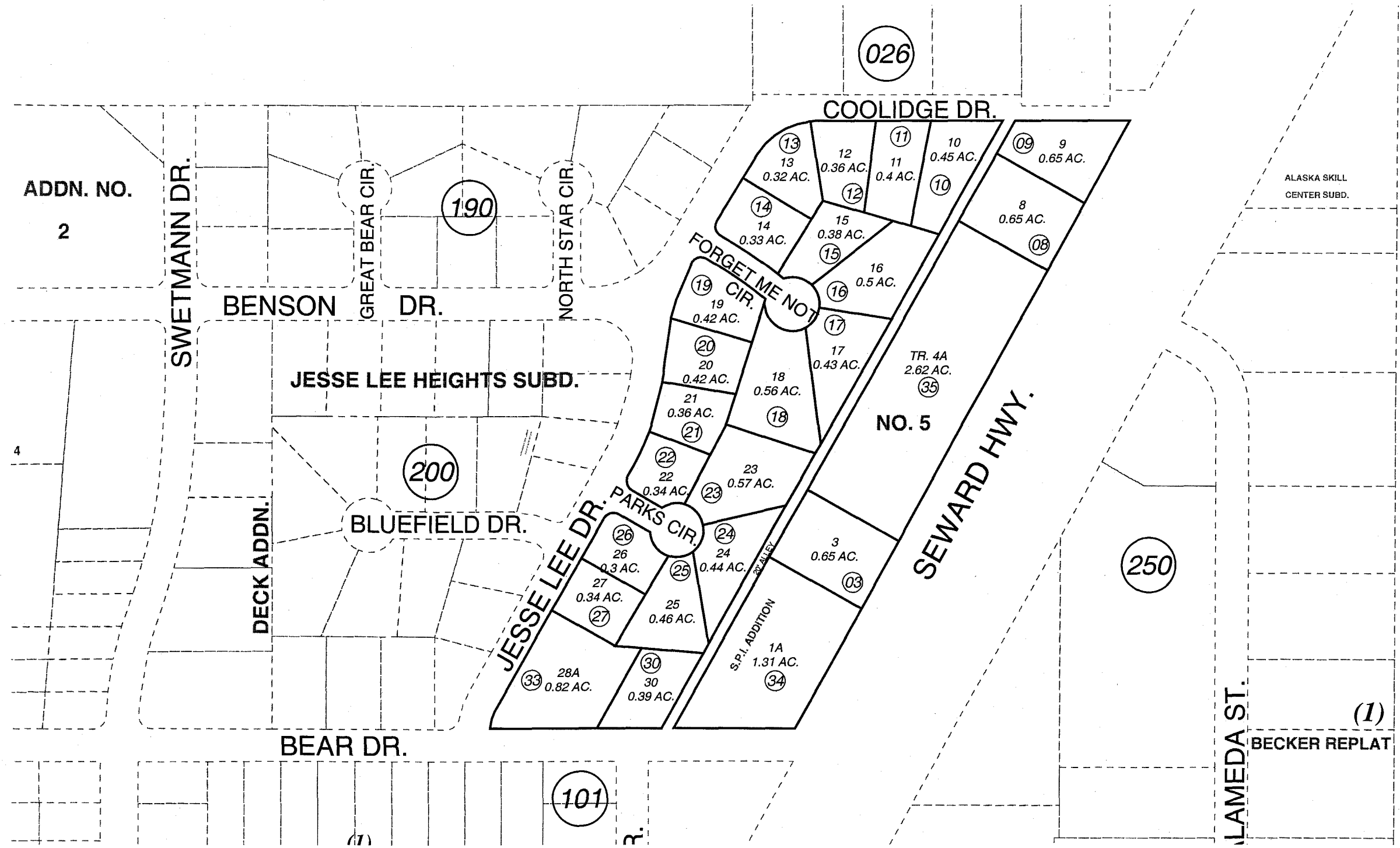


POR. U.S.S. 241, T01S, R01W, S.M.

145-180



ADDN. NO.
2

4

JESSE LEE HEIGHTS SUBD.

BLUEFIELD DR.

BEAR DR.

COOLIDGE DR.

FORGET ME NOT CIR.

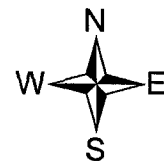
NO. 5

SEWARD HWY.

ALASKA SKILL
CENTER SUBD.

LAMEDA ST.

BECKER REPLAT



DATE: Jan 31, 2005

For 2005 assessment roll

Delete	Add	Revise
To		
31,32	35	

Assessor's Map
Kenai Peninsula Borough

JESSE LEE HEIGHTS SUB SW0000050
 JESSE LEE HEIGHTS SUB LOT 6A BLOCK 3 SW0870021
 JESSE LEE HEIGHTS SUB LOT 28A BLOCK 3 SW0920019
 JESSE LEE HEIGHTS SPI ADDN SW0970015
 JESSE LEE HEIGHTS SUB ADDN NO 5 SW2004023

This map is prepared
 for Kenai Peninsula
 Borough Assessing Dept.
 use only and is not
 intended for conveyance
 nor is it a survey.

Note- Assessor's block Numbers Shown in Ellipses
 Assessor's Parcel Numbers Shown in Circles