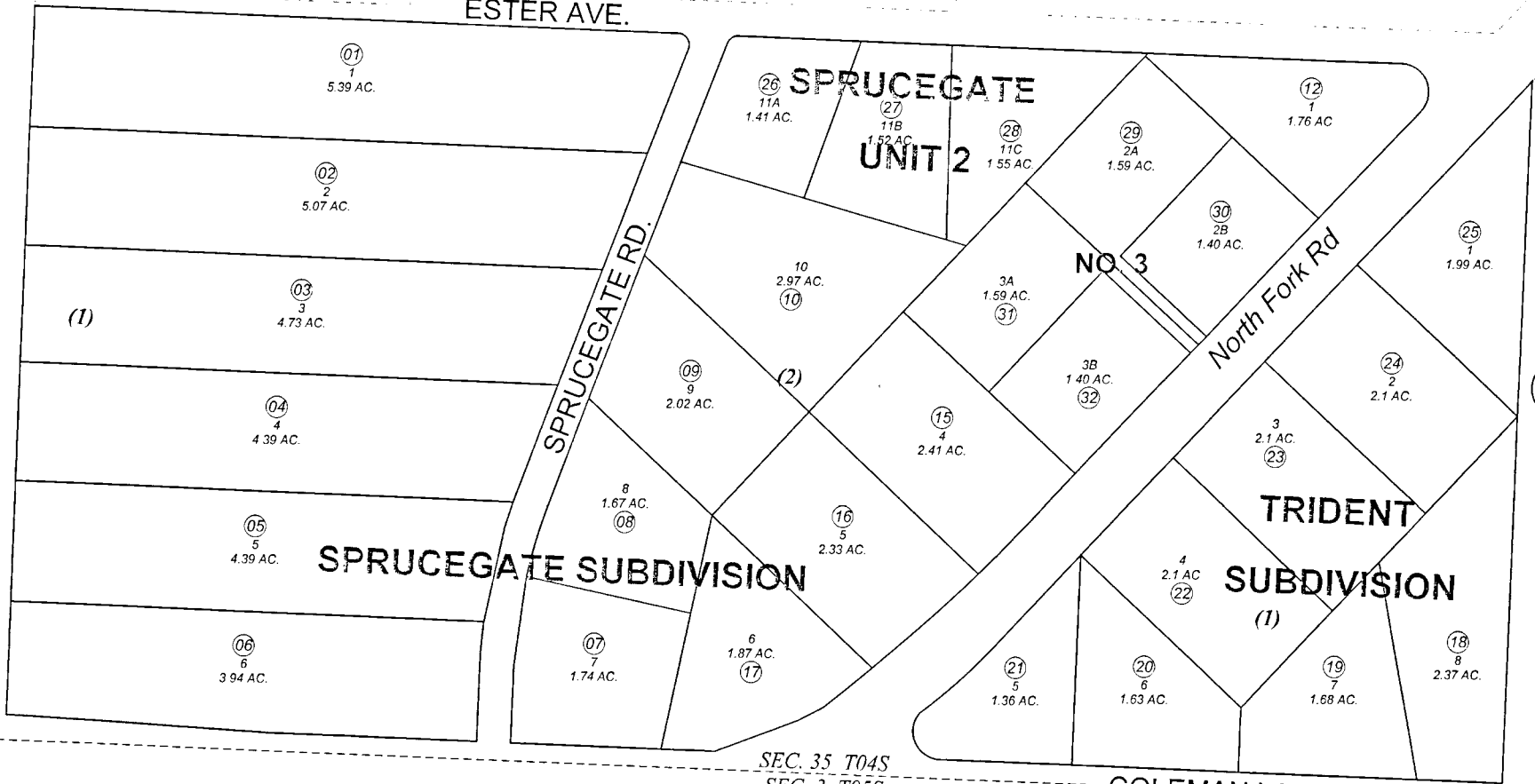


162

ESTER AVE.



720

163

SPRUCEGATE SUBDIVISION

SPRUCEGATE UNIT 2

NO. 3

North Fork Rd

TRIDENT SUBDIVISION (1)

SEC. 35 T04S
SEC. 3 T05S

COLEMAN LANTERN AVE.

AUGUST KNIGHT

BK 169

JANUARY 23, 2004

For 2004 assessment roll		
Delete	Add	Revise
To		
13, 14	29-32	



Assessor's Map
Kenai Peninsula Borough

SPRUCEGATE SUB HM0760059
TRIDENT SUB HM0760069
SPRUCEGATE SUB UNIT 2 HM0850068
SPRUCEGATE SUB NO 3 HM2003092

This map is prepared for Kenai Peninsula Borough Assessing Dept use only and is not intended for conveyance nor is it a survey.

Note- Assessor's block Numbers Shown in Ellipses
Assessor's Parcel Numbers Shown in Circles