

NE 1/4 SE 1/4 SEC. 35, T04S, R15W, S.M.

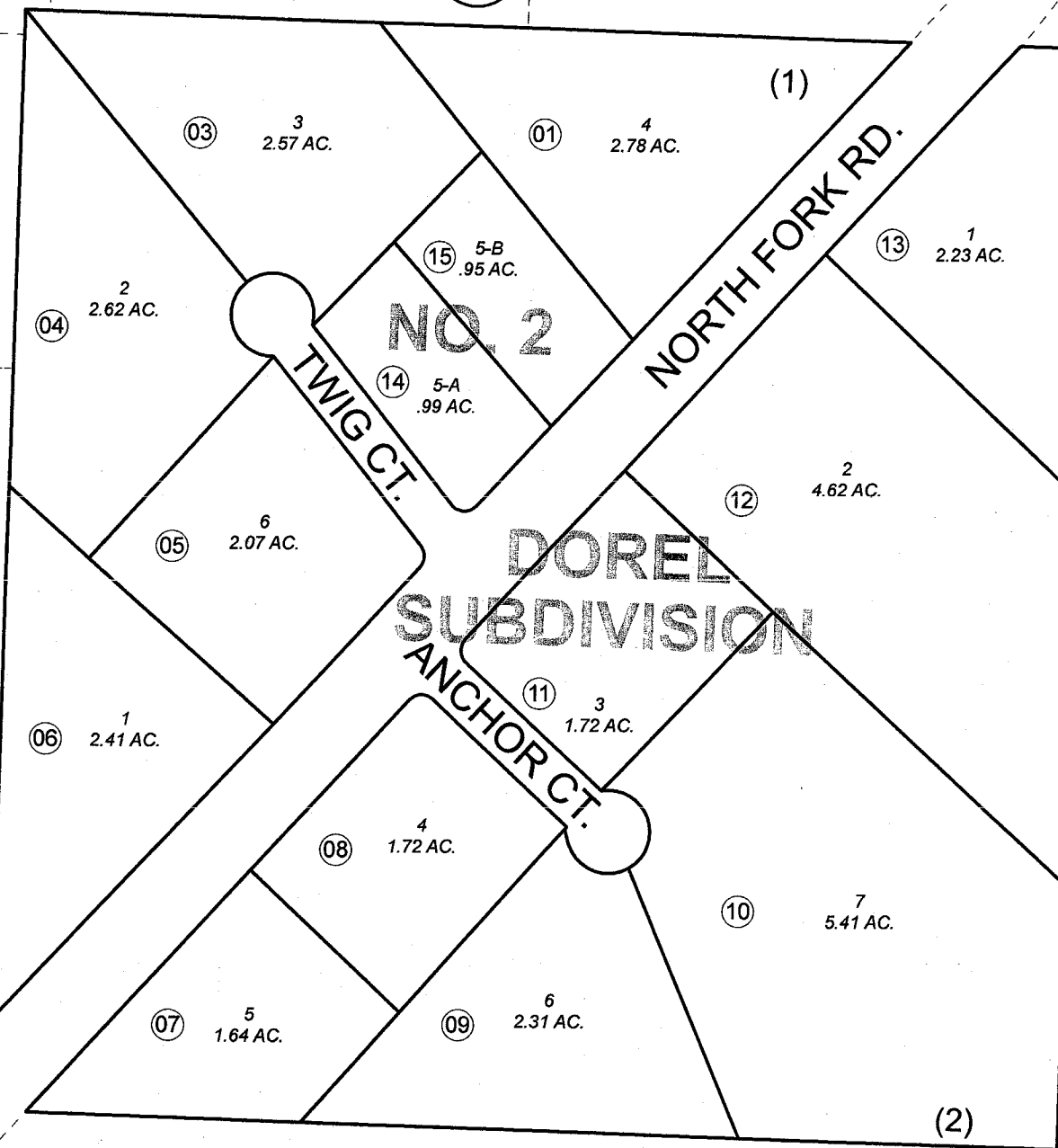
165-440

N.O.B. SUBD.

MARK LN.

162

EL



ISION

162

671

163

SEPT. 12, 2007

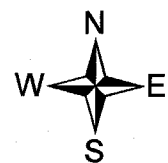
For 2008 assessment roll

Delete	Add	Revise
2	14,15	

To

2

14,15



Assessor's Map
Kenai Peninsula Borough

DOREL SUB HM0760014
DOREL SUB NO 2 HM2007079

This map is prepared for Kenai Peninsula Borough Assessing Dept. use only and is not intended for conveyance nor is it a survey.

Note- Assessor's block Numbers Shown in Elipses
Assessor's Parcel Numbers Shown in Circles