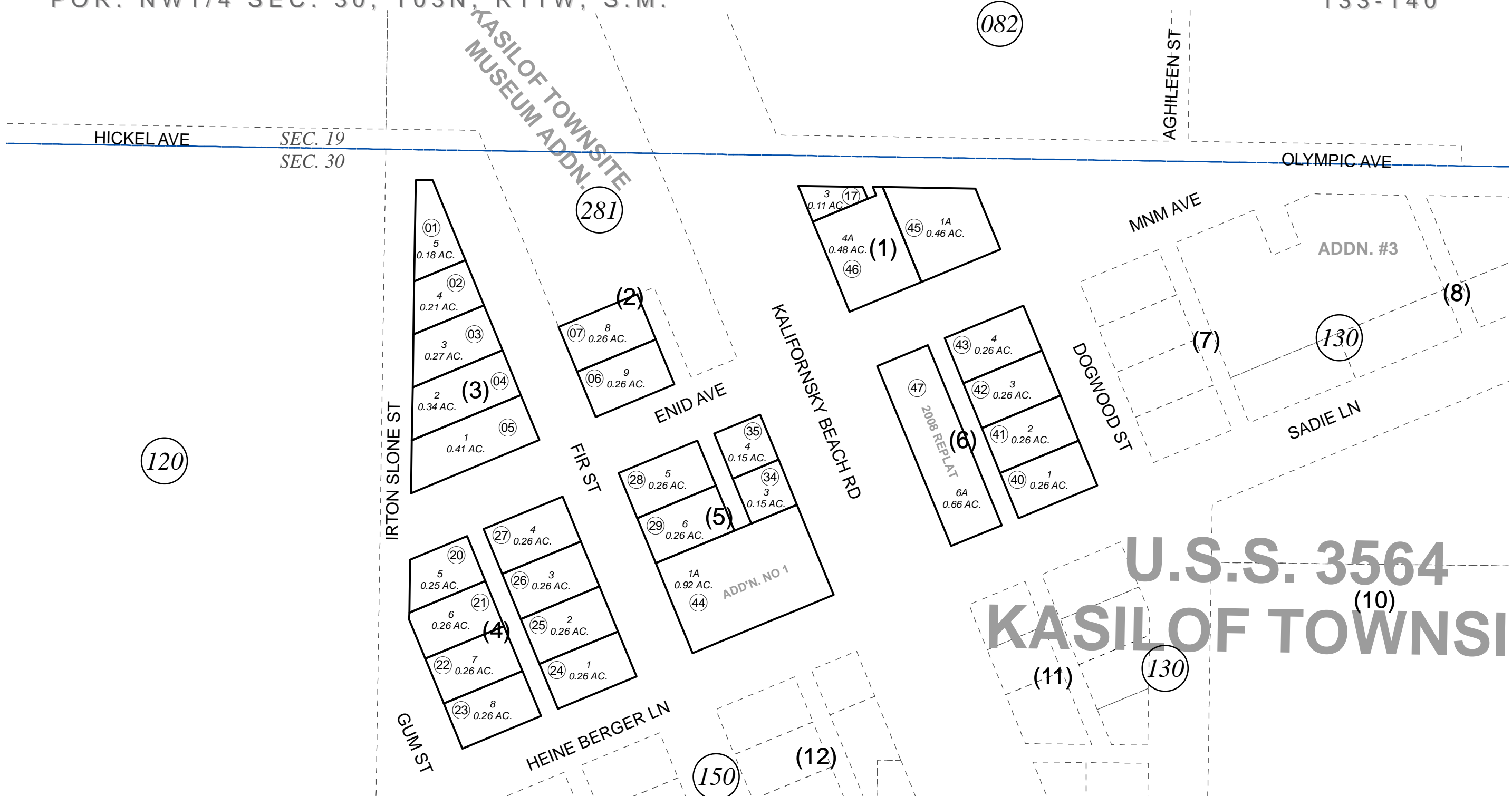


POR. NW1/4 SEC. 30, T03N, R11W, S.M.

133-140



120

281

082

130

U.S.S. 3564
KASILOF TOWNSITE

130

150

12

JUNE 6, 2013



0 50 100 200 Feet

For 2014 assessment roll		
Delete	Add	Revise
To		
48	133-281+	

Assessor's Map
Kenai Peninsula Borough

US SURVEY 3564 TOWNSITE OF KASILOF
KASILOF TOWNSITE SUB ADDN 1 KN0860231
KASILOF TOWNSITE HICKS ADDN KN2000061
KASILOF TOWNSITE SUB 2008 REPLAT KN2009036
KASILOF TOWNSITE SUB CIRI REPLAT KN2012013

This map is prepared for Kenai Peninsula Borough Assessing Dept. use only and is not intended for conveyance nor is it a survey.

Note- Assessor's block Numbers Shown in Ellipses
Assessor's Parcel Numbers Shown in Circles