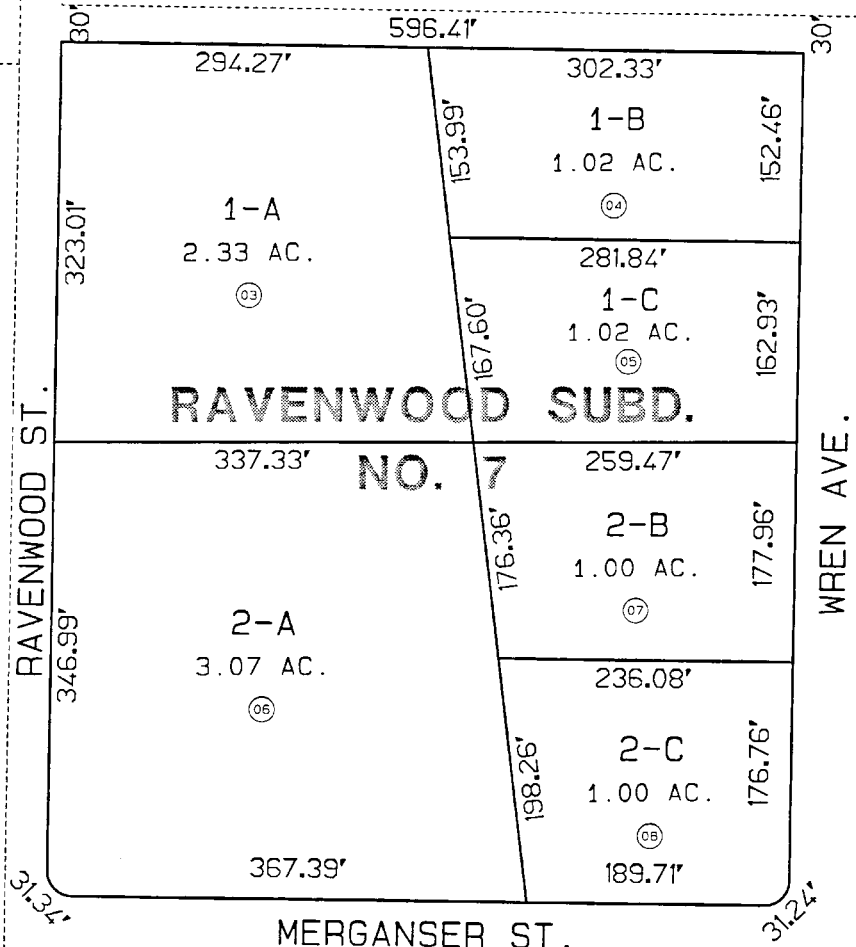


27

CANVASBACK AVE.

3



58

WREN AVE.

MERGANSER ST.

5



DATE: DEC. 17, 1997

FOR 1998 ASSESSMENT ROLL		
DELETE	ADD	REVISED
TO		
1-2	3-8	

Assessor's Map
Kenai Peninsula Borough

RAVENWOOD SUB #7 KN970070

THIS MAP IS PREPARED FOR KENAI PENINSULA BOROUGH ASSESSING DEPT. USE ONLY AND IS NOT INTENDED FOR ANY OTHER USE OR REPRESENTATION

NOTE - Assessor's Block Numbers Shown In Ellipses
Assessor's Parcel Numbers Shown In Circles