

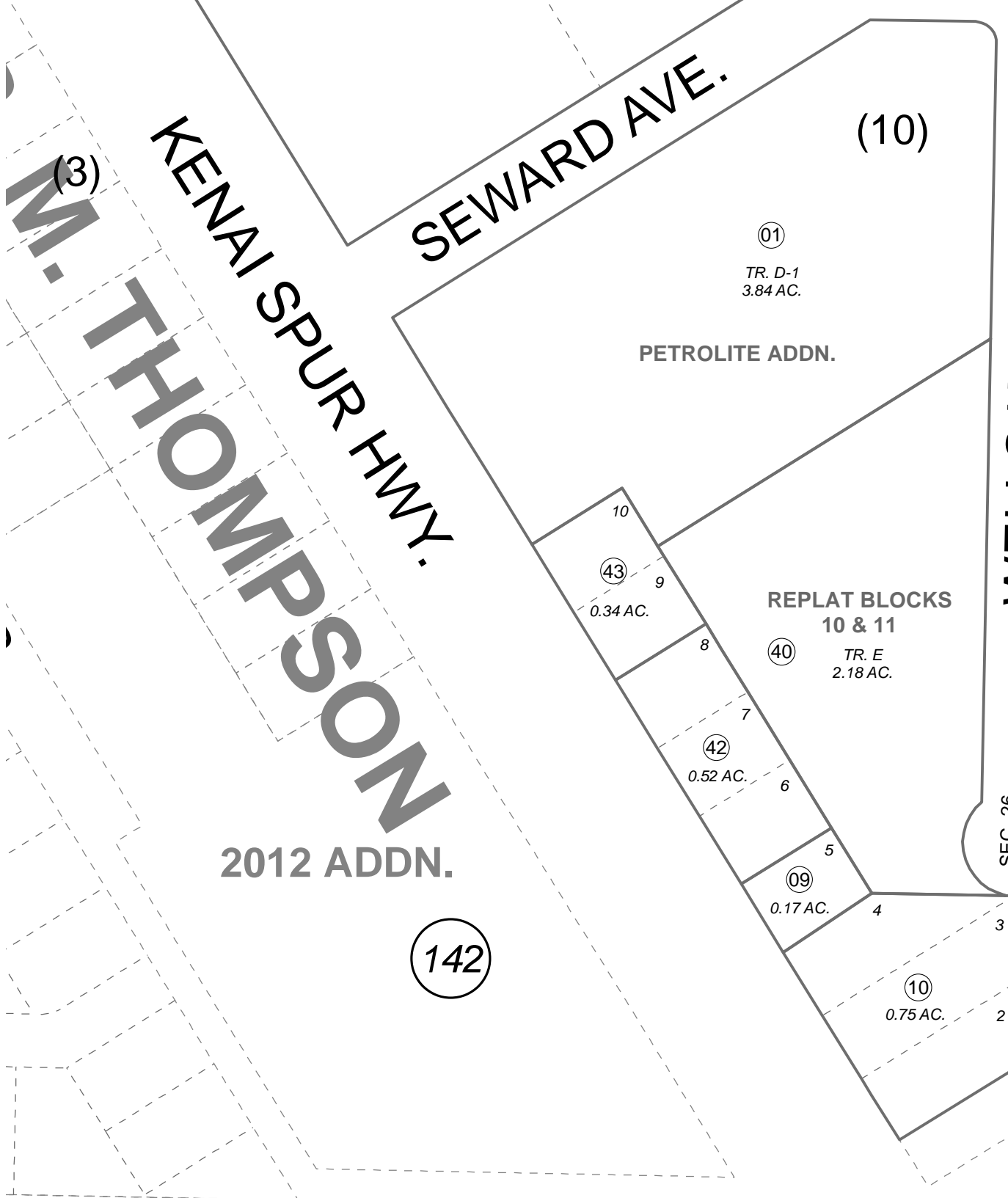
039-150

POR. SEC. 26, T06N, R12W, S.M.

LINE HEIGHTS RD NO 3

M. THOMPSON

RADAR SUBD.



010

160

142

010

(12)

(17)

SELDOVIA AVE.

SEWARD AVE.

WELLS WAY

KENAI SPUR HWY.



0 50 100 Feet

SEPTEMBER 26, 2013

For 2014 assessment roll	
Delete	Add
	To
12,13	01
41	

This map is prepared for Kenai Peninsula Borough Assessing Dept. use only and is not intended for conveyance nor is it a survey.

Note- Assessor's block Numbers Shown in Ellipses Assessor's Parcel Numbers Shown in Circles

RADAR SUB KN0000706
RADAR SUB REPLAT BLOCKS 10 & 11 KN0790028
RADAR SUB PETROLITE ADDN KN2013069

Assessor's Map
Kenai Peninsula Borough