

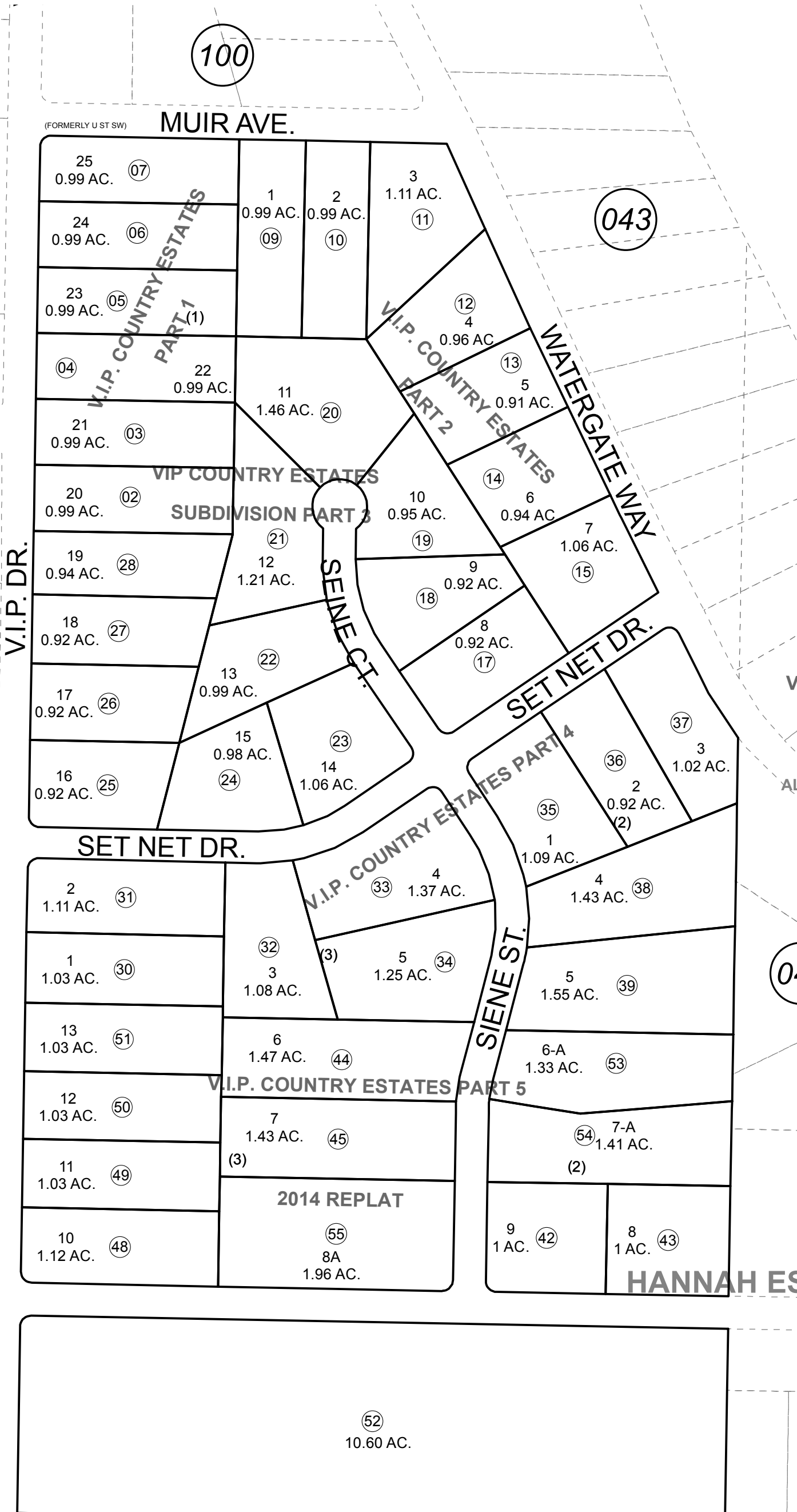
049-410

E1/2 SW1/4 SEC. 17, T05N, R11W, S.M.

EK AT

RANCH ESTATES PART 2

PART 1



100

043

040

043

BK 055

SEC. 17  
SEC. 20

KALIFOR

0 100 200 Feet



DECEMBER 9, 2014

For 2015 assessment roll	
Delete	Add
	Revise
To	55
46.47	

- V I P COUNTRY ESTATES SUB PART 1 KN0770055
- V I P COUNTRY ESTATES SUB PART 2 KN0770126
- V I P COUNTRY ESTATES PT 3 KN0790001
- V I P COUNTRY ESTATES SUB PART 3 KN0790001
- V I P COUNTRY ESTATES PT 4 KN0840087
- V I P COUNTRY ESTATES SUB PART 4 KN0840087
- V I P COUNTRY ESTATES PT 5 KN0850124
- V I P COUNTRY ESTATES SUB PART 5 KN0850124
- V I P COUNTRY EST PART 5 - WHISPER KN2000031
- V I P COUNTRY EST PART 5 2014 REPLAT KN2014086

Assessor's Map  
Kenai Peninsula Borough

Note- Assessor's block Numbers Shown in Ellipses  
Assessor's Parcel Numbers Shown in Circles

This map is prepared  
for Kenai Peninsula  
Borough Assessing Dept.  
use only and is not  
intended for conveyance  
nor is it a survey.