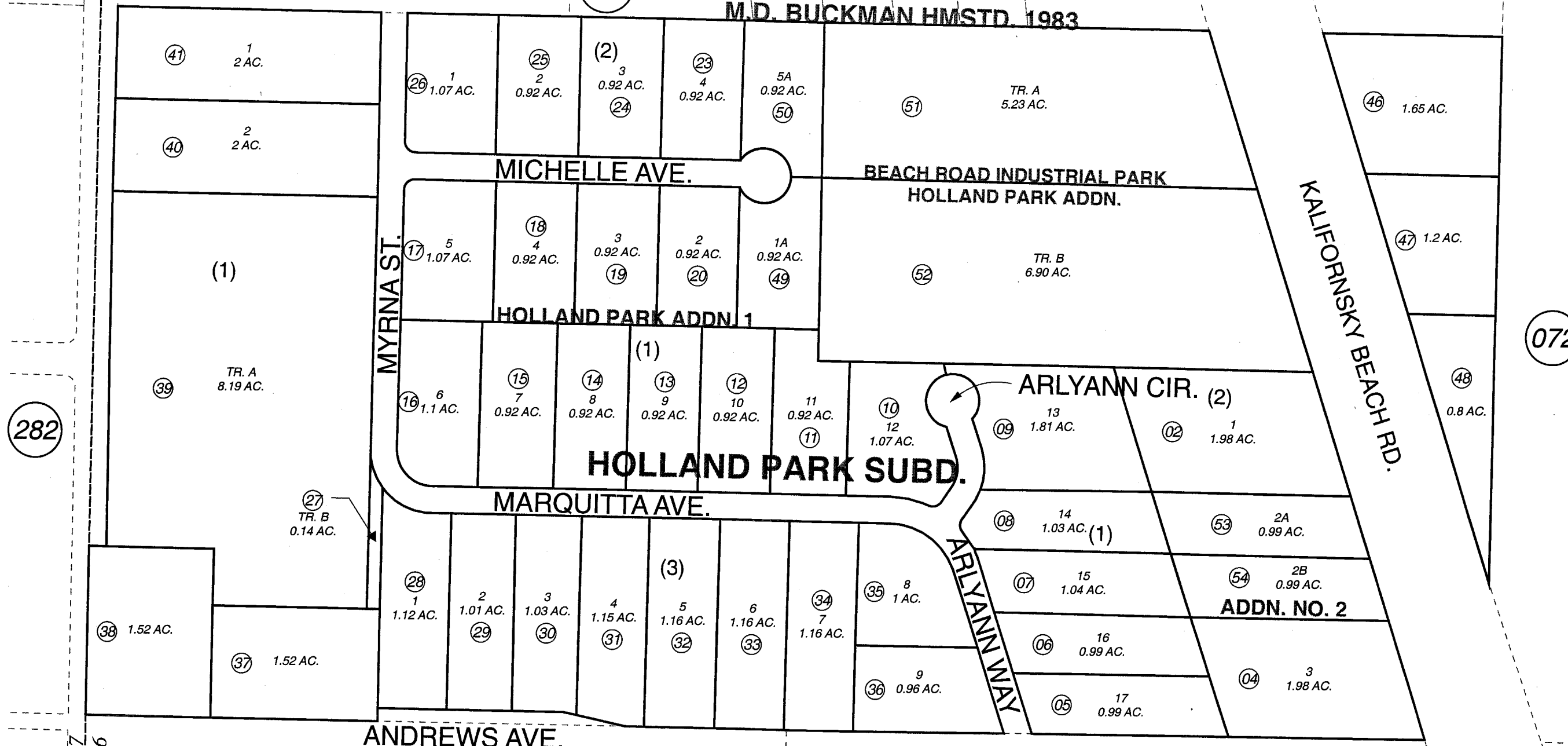


POR. S1/2 NW1/4 SEC. 26, T05N, R11W, S.M.

055-510

560 1990 ADD'N.

M.D. BUCKMAN HMSTD. 1983



282

072

074

SEC. 27  
SEC. 26



DECEMBER 5, 2006

For 2007 assessment roll		
Delete	Add	Revise
To		
3	53,54	

Assessor's Map  
Kenai Peninsula Borough

HOLLAND PARK SUB □ KN0780146  
 HOLLAND PARK SUB FIRST ADDN □ KN0800002  
 BEACH ROAD INDUSTRIAL PARK SUB □ KN0820074  
 BEACH ROAD INDUSTRIAL PARK SUB HOLLAND PARK ADDN □ KN2004130  
 HOLLAND PARK SUB ADDN NO 2 KN2006102

This map is prepared for Kenai Peninsula Borough Assessing Dept. use only and is not intended for conveyance nor is it a survey.

Note- Assessor's block Numbers Shown in Ellipses  
Assessor's Parcel Numbers Shown in Circles