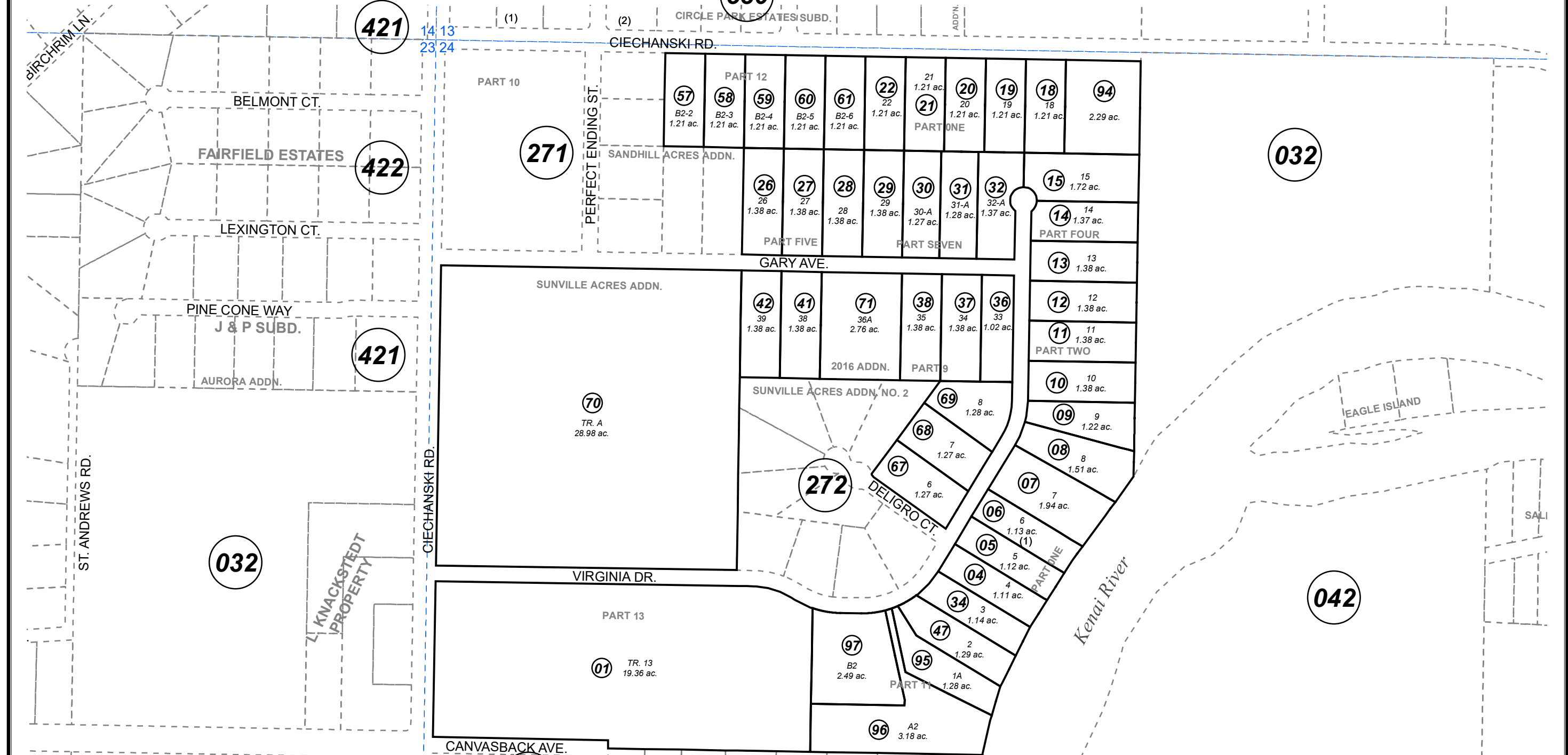


NW1/4 SEC. 24, T05N, R11W, S.M.

530

055-270



JUNE 5, 2019

For 2020 assessment roll		
Delete	Add	Revise
To		
62-66	055272+	



0 200 400 Feet

Assessor's Map
Kenai Peninsula Borough

- DIAMOND WILLOW ESTATES SUB PART 1 KN0750068
- DIAMOND WILLOW ESTATES SUB PART 2 KN0760038
- DIAMOND WILLOW ESTATES SUB PART 4 KN0770004
- DIAMOND WILLOW ESTATES SUB PART 6 KN0810049
- DIAMOND WILLOW ESTATES SUB PART 5 KN0810100
- DIAMOND WILLOW ESTATES SUB PART 7 KN0820062
- DIAMOND WILLOW ESTATES SUB PART 8 KN2002123
- DIAMOND WILLOW ESTATES SUB PART 9 KN2005005
- DIAMOND WILLOW ESTATES SUB PART 10 KN2008135
- DIAMOND WILLOW ESTATES SUB PART 11 KN2012093
- DIAMOND WILLOW ESTATES SUB PART 12 KN2014038
- DIAMOND WILLOW ESTATES SUB PART 13 KN2015012
- DIAMOND WILLOW ESTATES SUB SUNVILLE ACRES ADDN KN2015069
- DIAMOND WILLOW ESTATES SUB 2016 ADDN KN2016085

This map is prepared for Kenai Peninsula Borough Assessing Dept. use only and is not intended for conveyance nor is it a survey.
Note- Assessor's block Numbers Shown in Ellipses
Assessor's Parcel Numbers Shown in Circles