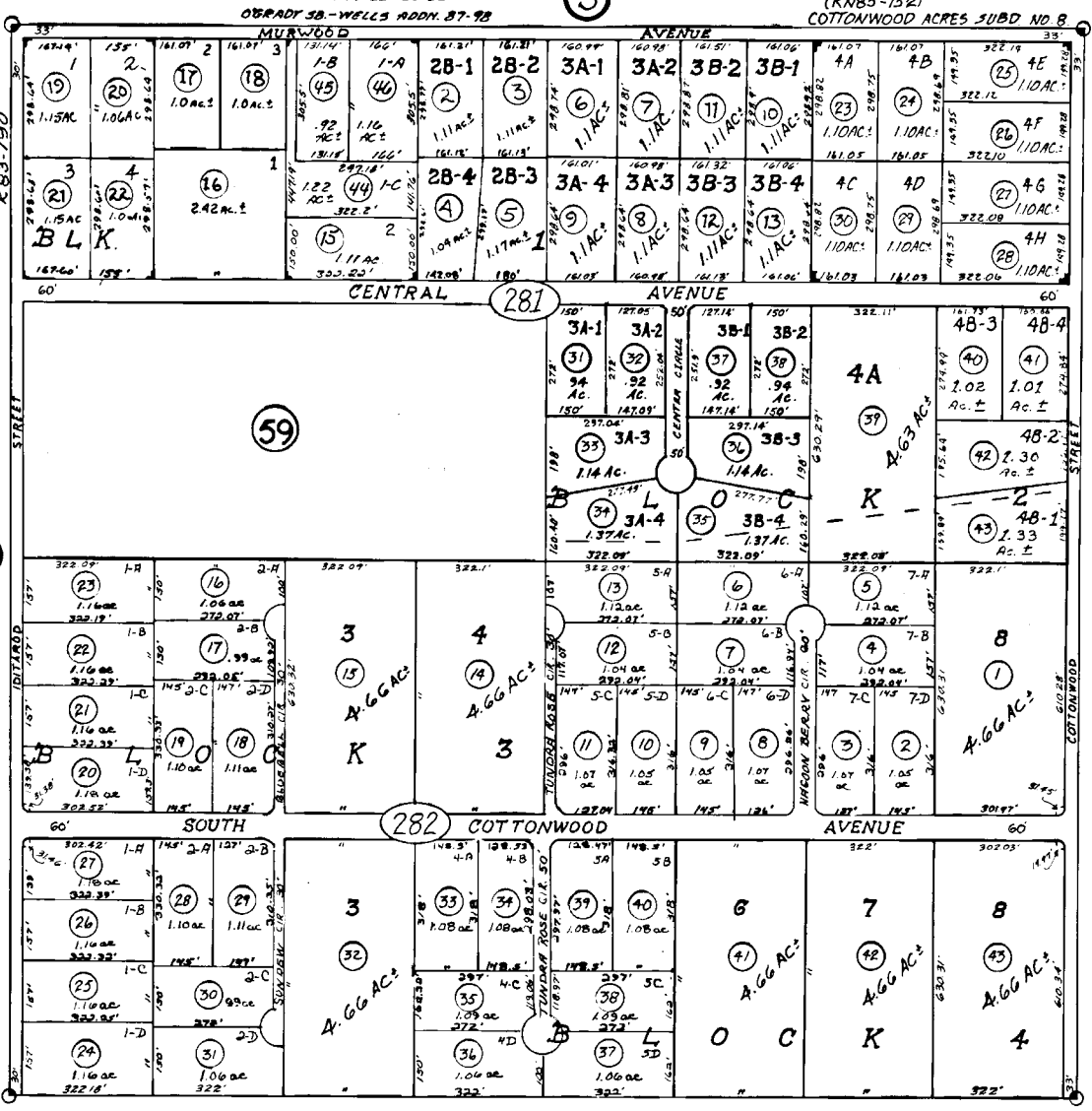


NE1/4 Sec. 27, T. 5 N., R. 11 W., S. B. & M.

55-28

COTTONWOOD ACRES NO. 7
K-83-190

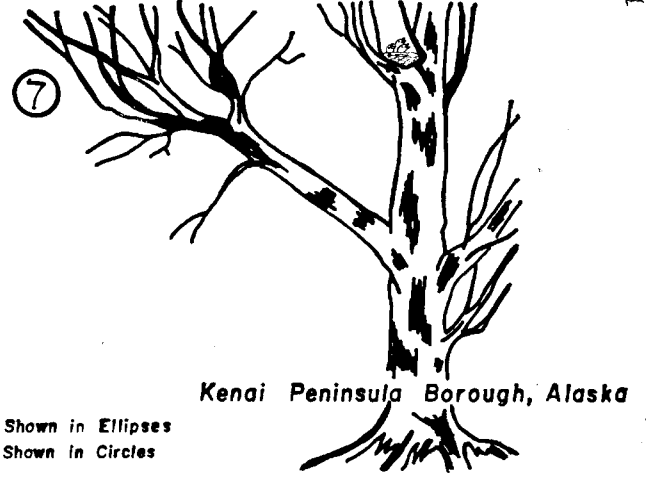


RESUB. LOTS 1,2,5,6,7 BLK. 3 &
 LOTS 1,2 BLK. 4 K-78-179
 RESUB. LOTS 4,5 BLK. 4 K-78-224

McCARROLL SUBDIVISION (K-77-124)
 RESUB. OF LOT 1B, BLK. 1, COTTONWOOD ACRES SUB.
 COTTONWOOD ACRES SUB. REPLAT OF
 LOTS 3-A & 3-B BLOCK 2
 (77-179)

COTTONWOOD ACRES 73-59
 REPLAT 74-43

ADDN. NO. 1 75-77
 RESUB. L.4B, B.2 77-198
 RESUB. L.3B, B.1 76-12
 RESUB. L.2B, B.1 77-58
 RESUB. L.3A, B.1 76-41



Kenai Peninsula Borough, Alaska

NOTE - Assessor's Block Numbers Shown in Ellipses
 Assessor's Parcel Numbers Shown in Circles