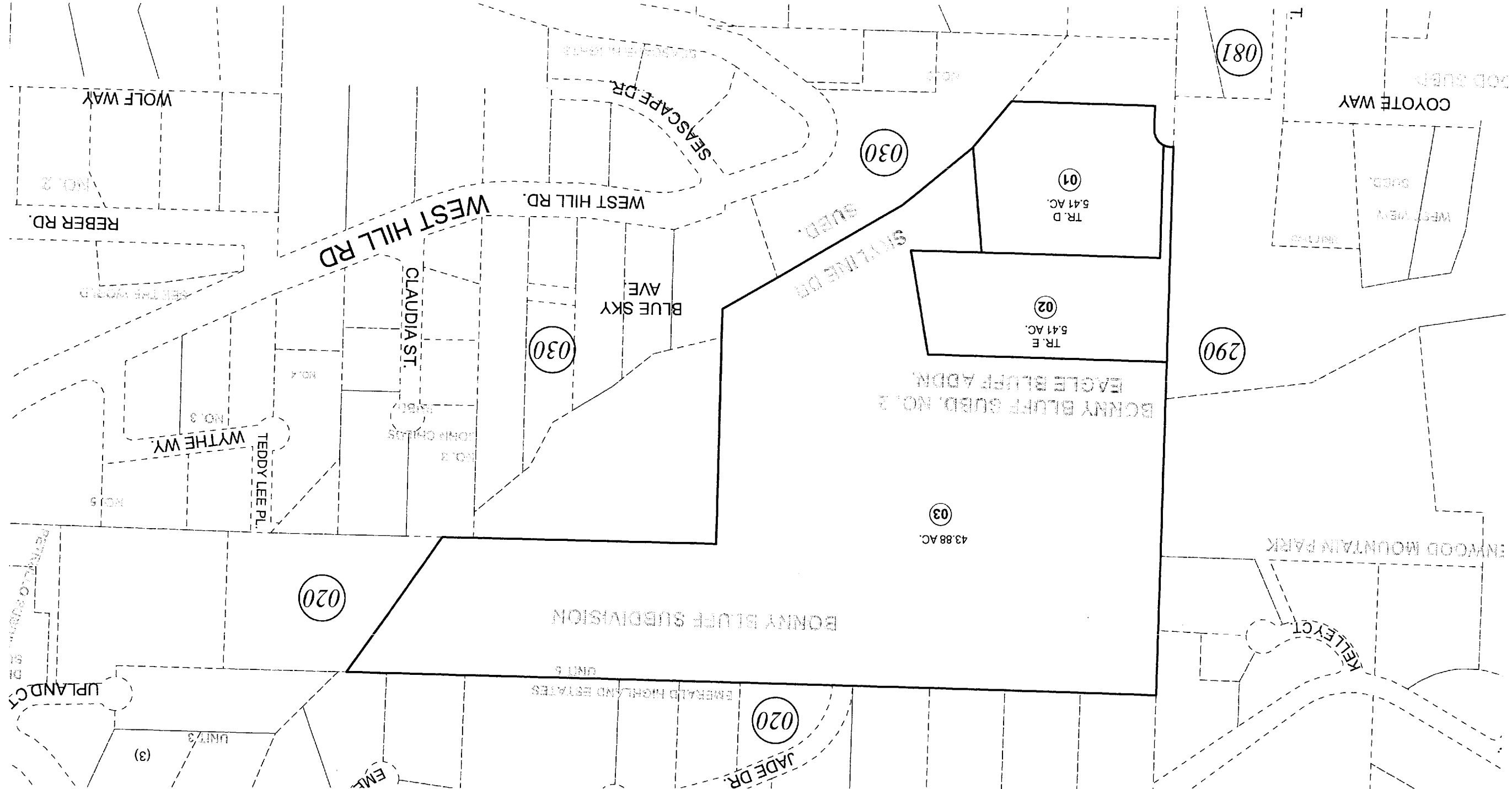


POR. S1/2 SEC. 13, T06S, R14W, S.M.

175-021



NOVEMBER 1, 2010

For 2011 assessment roll	
Delete	Add
Revise	
To	
NEW	
PAGE	



Assessor's Map
Kenai Peninsula Borough

BONNY BLUFF NO 2 EAGLE BLUFF ADDN HM2010046

This map is prepared for Kenai Peninsula Borough Assessing Dept. use only and is not intended for conveyance nor is it a survey. Note- Assessor's block Numbers Shown in Ellipses Assessor's Parcel Numbers Shown in Circles