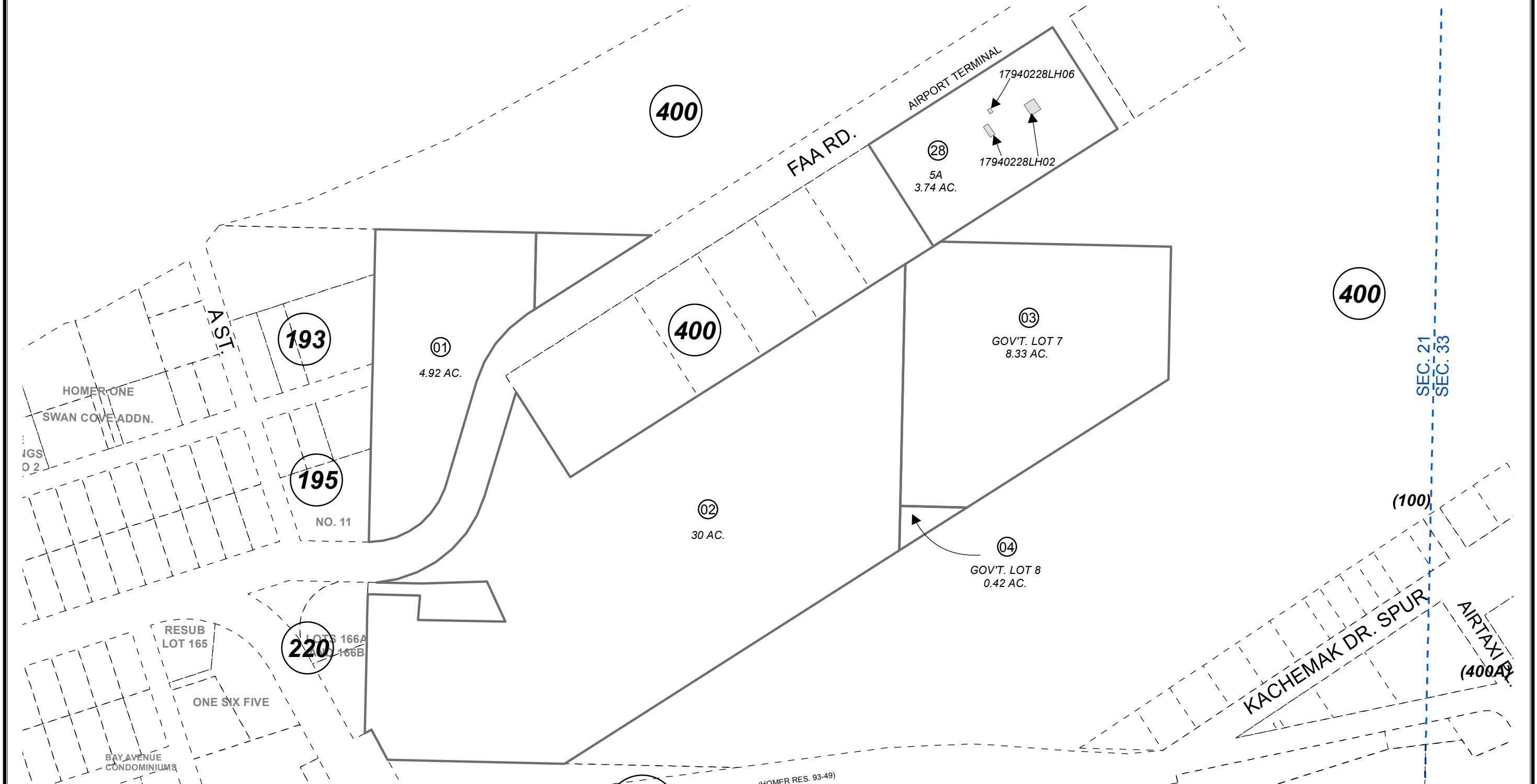


POR. SEC. 21, T06S, R13W, S.M.

179-402



**BK 181**

JANUARY 30, 2015

| For 2015 assessment roll |                                 |        |
|--------------------------|---------------------------------|--------|
| Delete                   | Add                             | Revise |
|                          | To                              | 28     |
|                          | (ADDED LH02 AND LH06 REFERENCE) |        |

Assessor's Map  
Kenai Peninsula Borough

HOMER AIRPORT TERMINAL SPACE  
LEASE PARCELS RESIDE ON PARCEL  
NO. 179-402-28

This map is prepared for Kenai Peninsula Borough Assessing Dept. use only and is not intended for conveyance nor is it a survey.  
Note- Assessor's block Numbers Shown in Elipses  
Assessor's Parcel Numbers Shown in Circles

