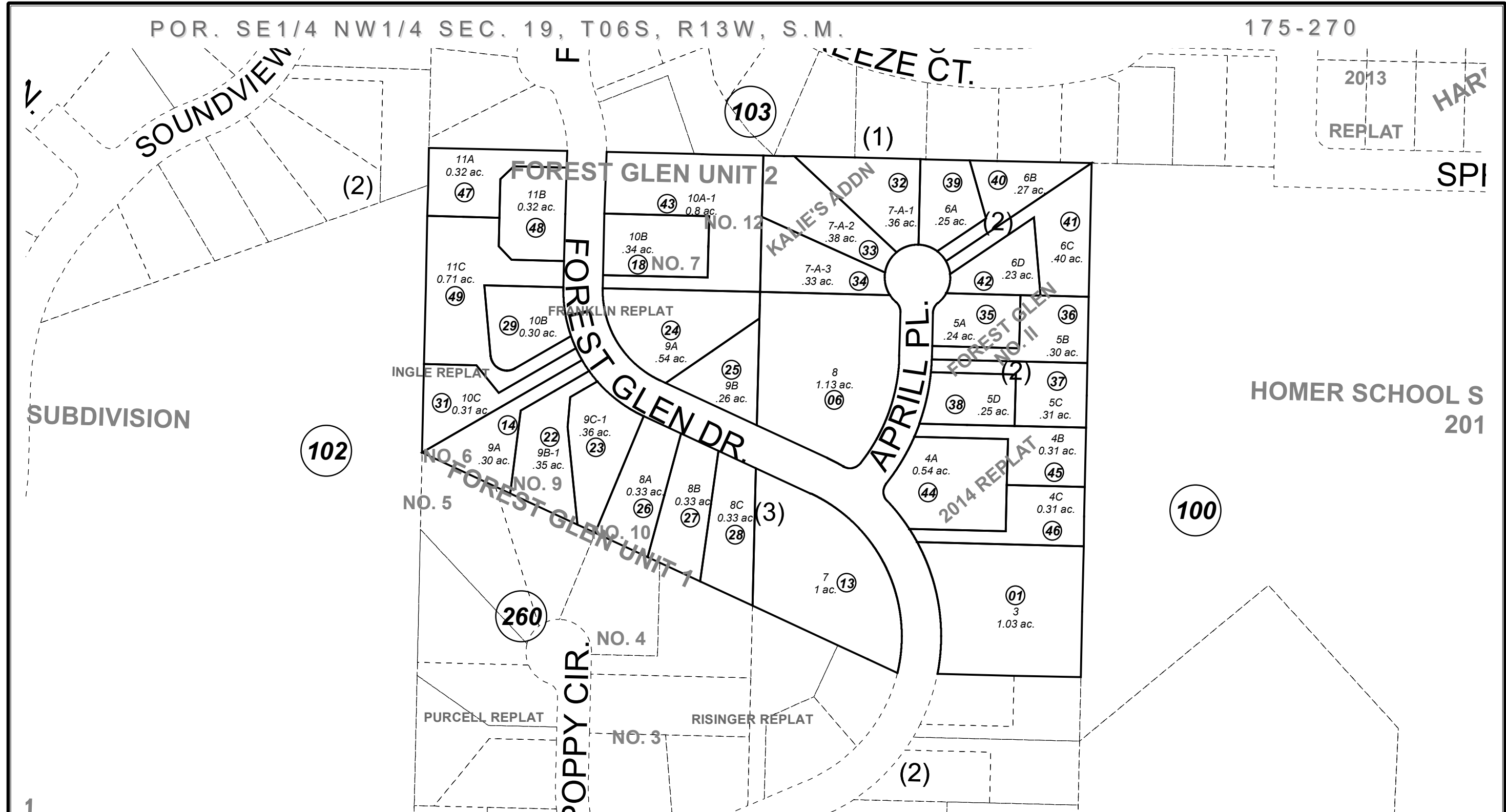


POR. SE1/4 NW1/4 SEC. 19, T06S, R13W, S.M.

175-270



DECEMBER 27, 2018

For 2019 assessment roll

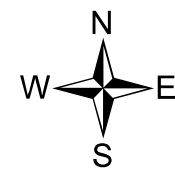
Delete	Add	Revise
To		
09,30	47-49	

Assessor's Map
Kenai Peninsula Borough

FOREST GLEN SUB UNIT 2 HM0740531
 FOREST GLEN SUB NO 6 HM2003026
 FOREST GLEN SUB NO 7 HM2003027
 FOREST GLEN SUB NO 8 HM2003028
 FOREST GLEN SUB NO 9 HM2004061
 FOREST GLEN SUB FRANKLIN REPLAT KN2005091
 FOREST GLEN SUB NO 10 HM2006060
 FOREST GLEN SUB INGLE REPLAT HM2006094
 FOREST GLEN SUB KALIE'S ADDN HM2009015
 FOREST GLEN SUB NO II HM2009017
 FOREST GLEN NO 12 HM2011015
 FOREST GLEN SUB UNIT 2 2014 REPLAT HM2014033
 FOREST GLEN SUB 2019 HM2018050

This map is prepared for Kenai Peninsula Borough Assessing Dept. use only and is not intended for conveyance nor is it a survey.

Note- Assessor's block Numbers Shown in Ellipses
Assessor's Parcel Numbers Shown in Circles



0 100 200 Feet