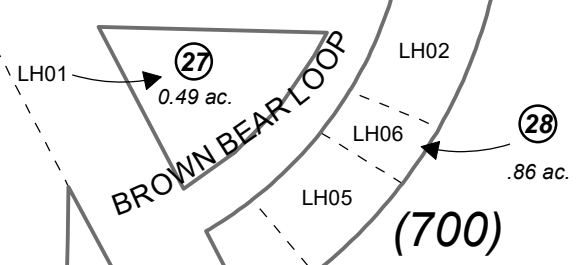


NE1/4 SE1/4 SEC. 20, T06S, R13W, S.M.

177-290

STERLING HWY

060



BELUGA LAKE

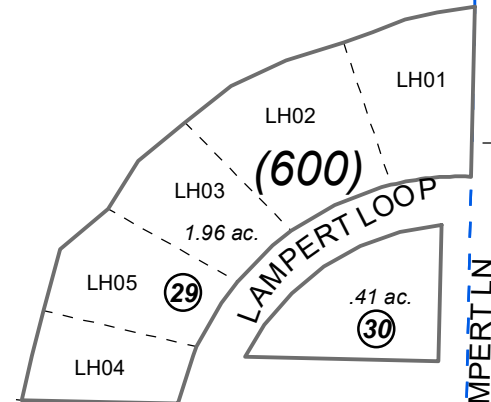
140

19
6.5 ac.

LAKE ST

BK
179

SEC. 20
SEC. 21

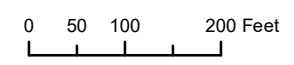


170

LAKESHORE DR

LAMPERT LN

OCEAN



FEBRUARY 1, 2021

For 2021 assessment roll		
Delete	Add	Revise
	To	
	28LH05, 28LH06	

Assessor's Map
Kenai Peninsula Borough

HOMER AIRPORT LAND OCCUPANCY

This map is prepared for Kenai Peninsula Borough Assessing Dept. use only and is not intended for conveyance nor is it a survey.

Note- Assessor's block Numbers Shown in Elipses
Assessor's Parcel Numbers Shown in Circles