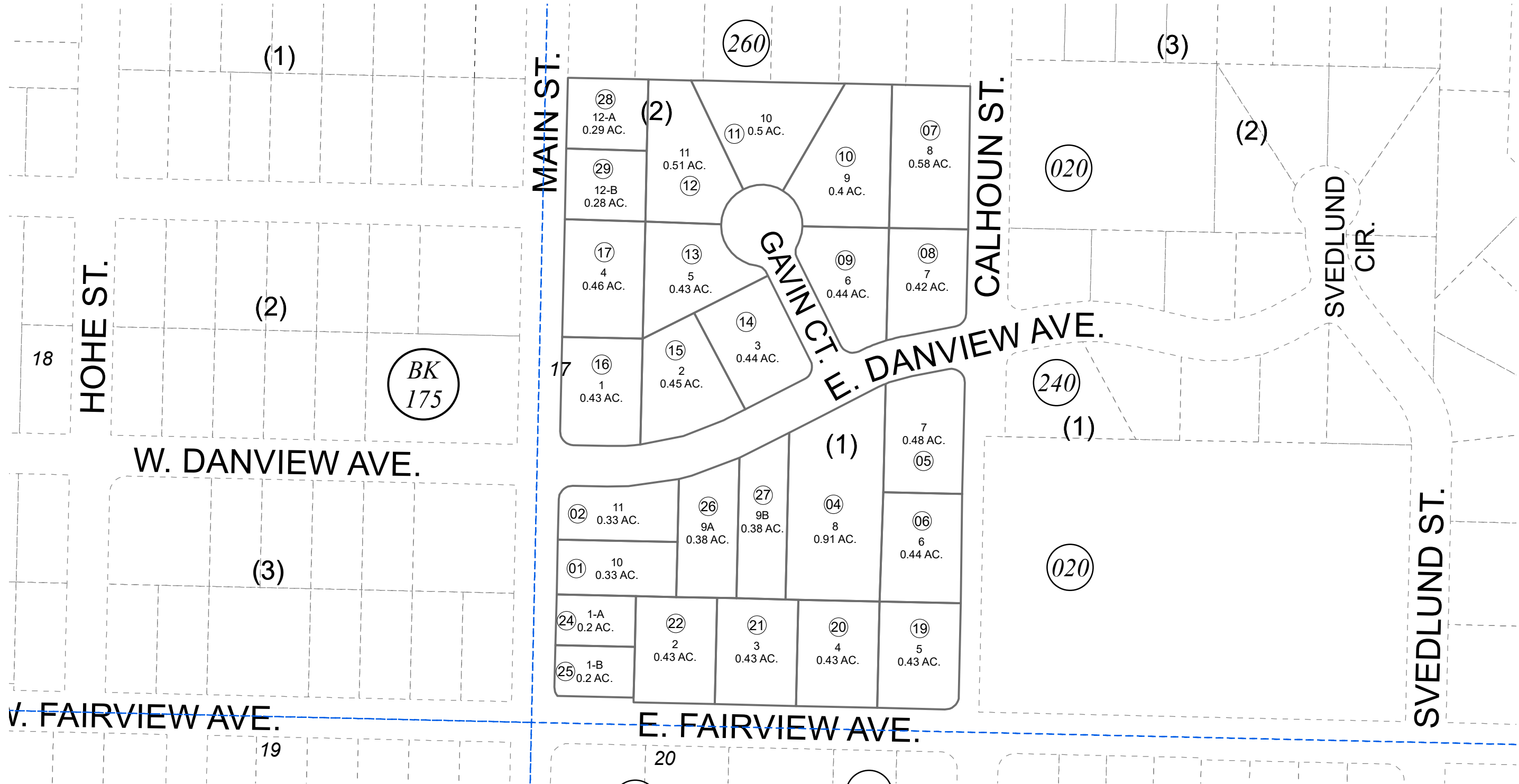


POR. SEC. 1N, T06S, R13W, S.M.

177-250



BK 175

NOVEMBER 13, 2020

For 2021 assessment roll		
Delete	Add	Revise
To		
18	28,29	



0 50 100 200 Feet

Assessor's Map
Kenai Peninsula Borough

KAPINGEN SUB UNIT 1 HM0750001
 KAPINGEN SUB UNIT 1 HM0750003
 KAPINGEN SUB UNIT 2 HM0750021
 KAPINGEN SUB NO 4 HM0850009
 KAPINGEN SUB UNIT 5 HM0850100
 KAPINGEN SUB HAND 2020 REPLAT HM2020058

Note- Assessor's block Numbers Shown in Ellipses
 Assessor's Parcel Numbers Shown in Circles

This map is prepared for Kenai Peninsula Borough Assessing Dept. use only and is not intended for conveyance nor is it a survey.