

POR. SEC. 20, T06S, R13W, S.M.

177-200

090

LEE DR.

KACHE

DETAIL

"The Rookery"

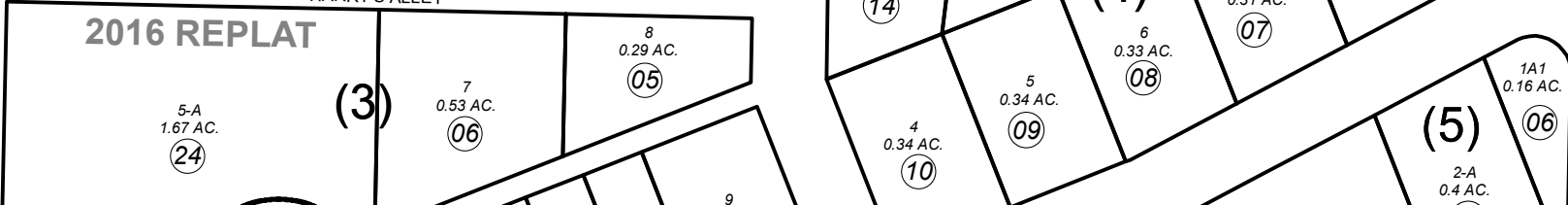
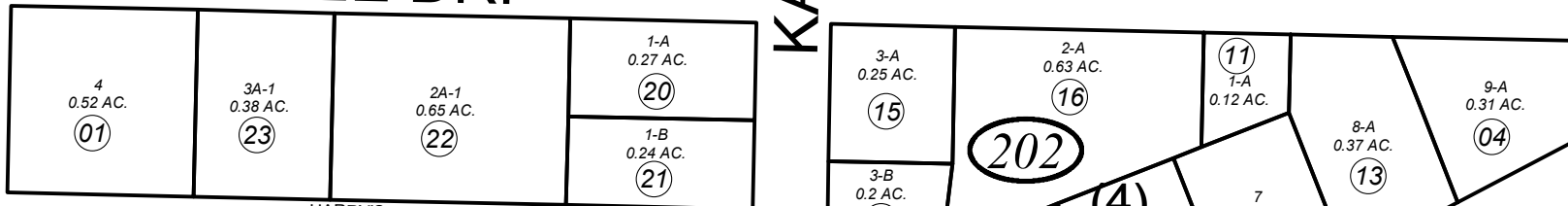
17720306CO03
CORMORANT'S
NEST

17720306CO04
TERN'S NEST

17720306CO02-
MURRE'S NEST

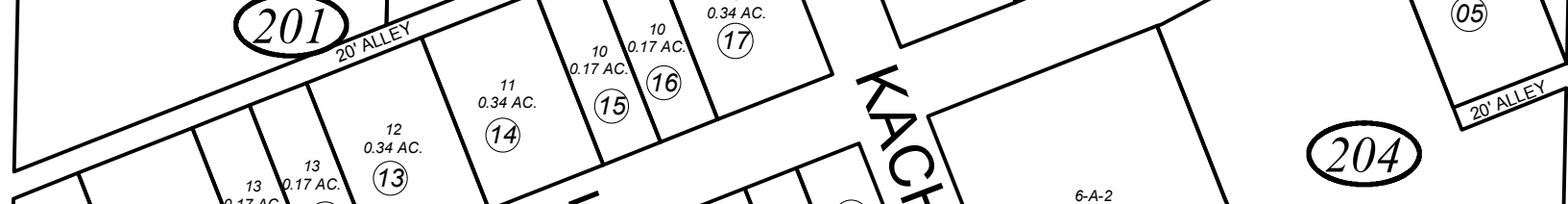
17720306CO01
PUFFIN'S NEST

UNIT 12



ON DR.

190



E. PIONEER AVE.

KACHEMAK WAY

204

2013
REPLAT

SEE
DETAIL

NO. 2

CAMPUS ADDN.

HEATH STREET REPLAT

NO. 5

NO. 27

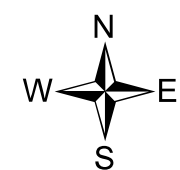
(10)

105

(8)

CARL SHOLIN SUBD.

KLONDIKE AVE.



0 50 100 Feet

NOVEMBER 3, 2016

For 2017 assessment roll		
Delete	Add	Revise
	To	
20107	20124	
20108		

Assessor's Map
Kenai Peninsula Borough

- GLACIER VIEW SUB NO 1 SUPPLEMENTAL PLAT HM0000301
- GLACIER VIEW SUB NO 1 REPLAT LOT 1 BLK 6 HM0730036
- GLACIER VIEW SUB NO 1 REPLAT OF LOTS 1-4 HM0750018
- GLACIER VIEW SUB ADDN NO 1 REPLAT OF HM0750026
- GLACIER VIEW SUB RESUB LOTS 4 5 6 & POR LOT 7 BLK 6 HM0780008
- GLACIER VIEW SUB NO 1 REPLAT HM0850041
- GLACIER VIEW SUB NO 19 HM0860107
- GLACIER VIEW SUB NO 21 HM0900056
- HEATH STREET REPLAT HM0900058
- GLACIER VIEW SUB CAMPUS ADDN HM2004048
- GLACIER VIEW SUB 2013 REPLAT HM2013042
- THE ROOKERY ASBUILT DRAWING HM2015004
- GLACIER VIEW SUB 2016 REPLAT HM2016022

This map is prepared for Kenai Peninsula Borough Assessing Dept. use only and is not intended for conveyance nor is it a survey.

Note- Assessor's block Numbers Shown in Ellipses
Assessor's Parcel Numbers Shown in Circles