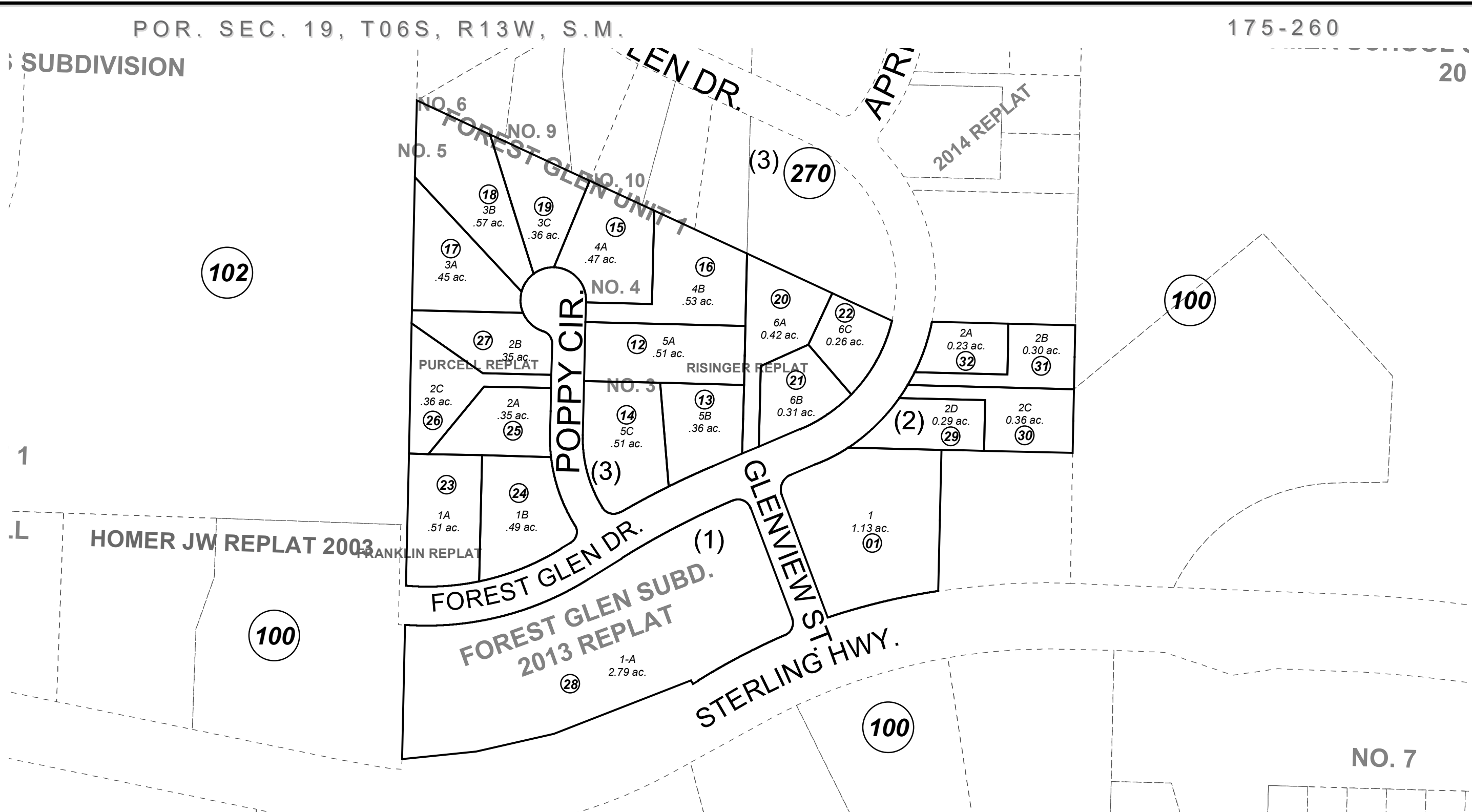


SUBDIVISION



0 55 110 220 Feet

DECEMBER 27, 2018

For 2019 assessment roll		
Delete	Add	Revise
	To	
02	29-32	

Assessor's Map  
Kenai Peninsula Borough

- FOREST GLEN SUB HM0731324
- FOREST GLEN SUB NO 3 HM2003023
- FOREST GLEN SUB NO 4 HM2003024
- FOREST GLEN SUB NO 5 HM2003025
- FOREST GLEN SUB RISINGER REPLAT HM2004089
- FOREST GLEN SUB FRANKLIN REPLAT HM2005091
- FOREST GLEN SUB PURCELL REPLAT HM2006093
- FOREST GLEN SUB 2013 REPLAT HM2013015
- FOREST GLEN SUB 2019 HM2018050

This map is prepared for Kenai Peninsula Borough Assessing Dept. use only and is not intended for conveyance nor is it a survey.

Note- Assessor's block Numbers Shown in Ellipses  
Assessor's Parcel Numbers Shown in Circles