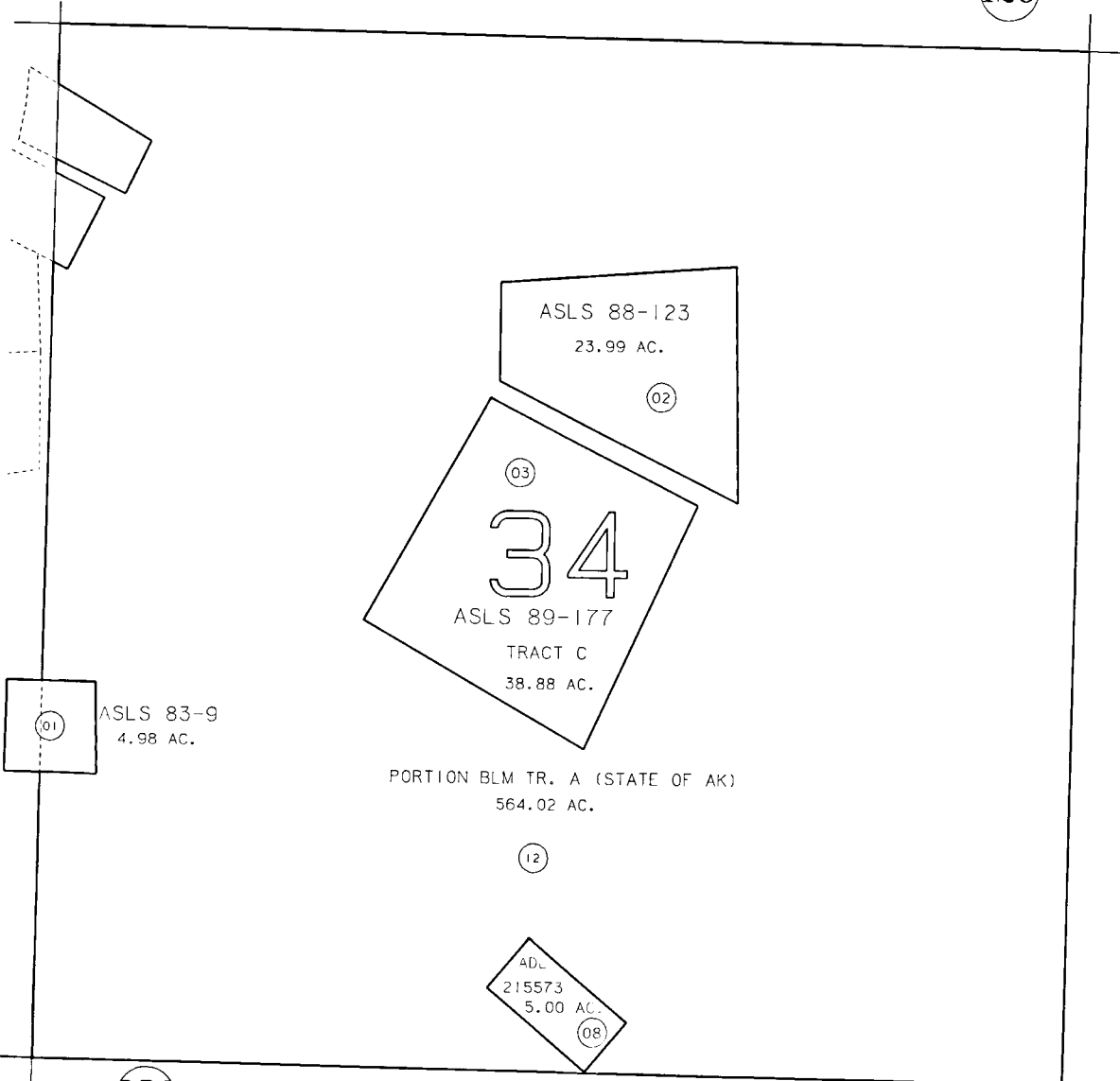


SECTION 34, T3S, R10W, SEWARD MERIDIAN (120)

185-122



ALASKA STATE LAND SURVEY 88-123 HM900057
 ALASKA STATE LAND SURVEY 83-009 JMB40000
 ALASKA STATE LAND SURVEY 89-177 HM900049



DATE: SEPT. 9, 1993

FOR 1994 ASSESSMENT ROLL		
DELETE	ADD	REVISED
TO		
12		

(256)

NOTE - Assessor's Block Numbers Shown In Ellipses Assessor's Map
 Assessor's Parcel Numbers Shown In Circles Kenai Peninsula Borough

THIS MAP IS PREPARED FOR KENAI PENINSULA BOROUGH ASSESSING DEPT. USE ONLY AND IS NOT INTENDED FOR ANY OTHER USE OR REPRESENTATION