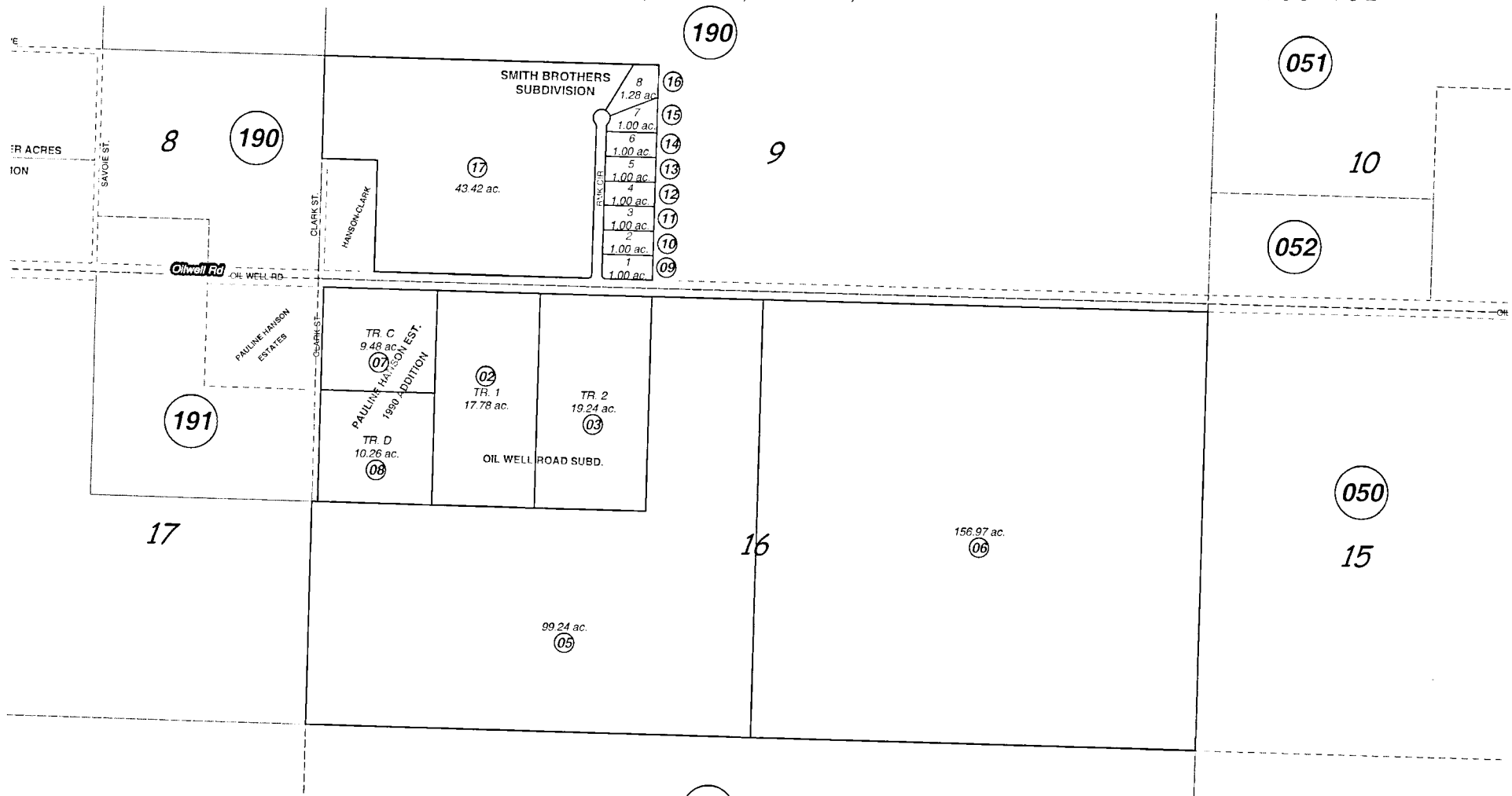


N1/2 N1/2 SEC. 16 & OR. SEC. 9, T02S, R13W, S.M.

185-192



JUNE 3, 2003

For 2004 assessment roll		
Delete	Add	Revise
To		
9-17		

Assessor's Map
Kenai Peninsula Borough

050

OIL WELL ROAD SUB 'HM0820085
PAULINE HANSON ESTATES SUB 1990 ADDN 'HM0900027
SMITH BROTHERS SUB 'HM2003013

This map is prepared for Kenai Peninsula Borough Assessing Dept. use only and is not intended for conveyance nor is it a survey.
Note- Assessor's block Numbers Shown in Ellipses
Assessor's Parcel Numbers Shown in Circles