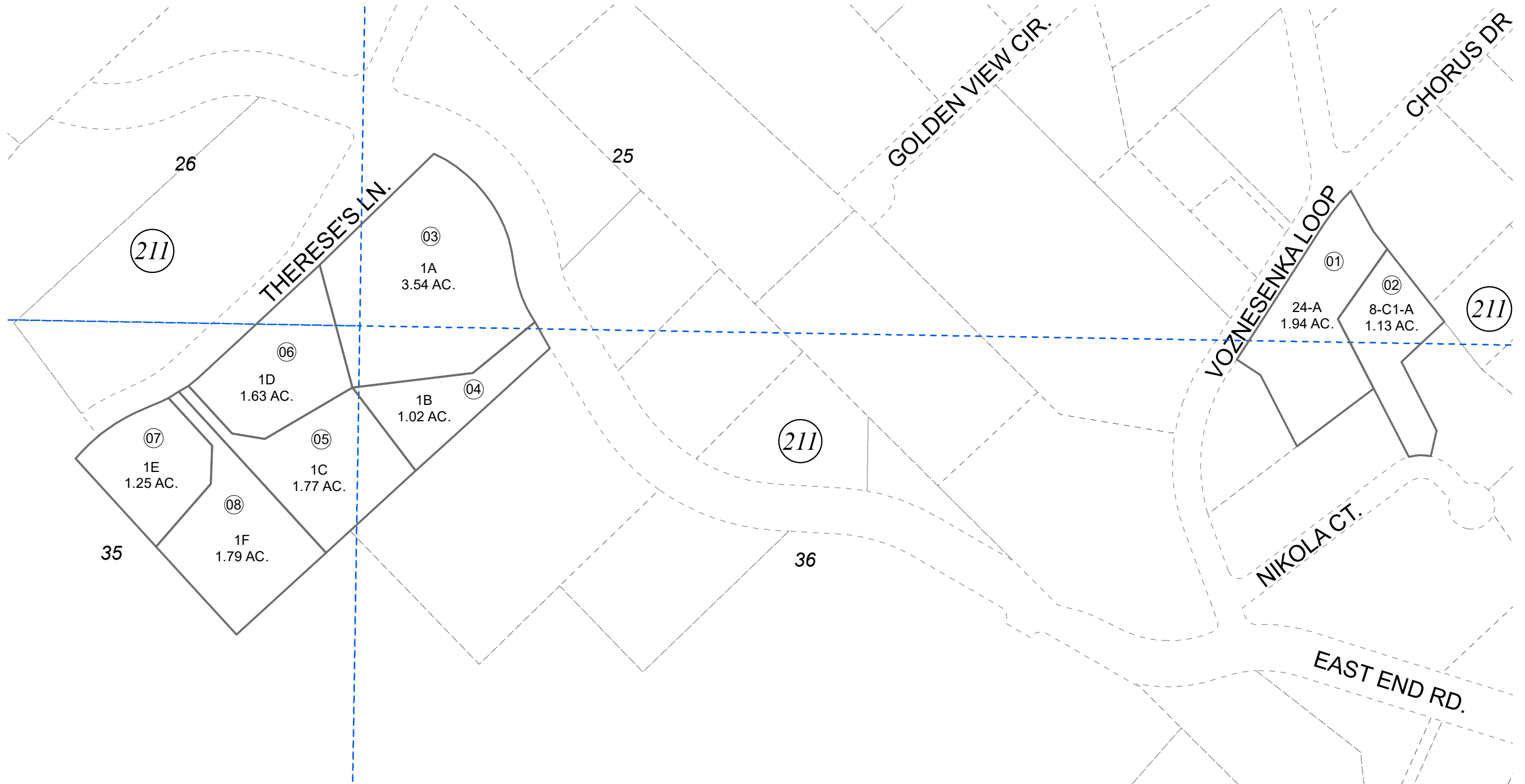
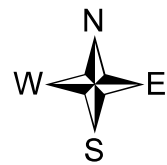


POR. SEC. 25, 26, 35 & 36, T04S, R11W, S.M.

185-213



JUNE 18, 2022



0 50 100 200 Feet

For 2023 assessment roll		
Delete	Add	Revise
	To	
211-42, 211-88	03-08	

Assessor's Map  
Kenai Peninsula Borough

VOZNESENKA SUB 2017 SCHOOL REPLAT HM2017049  
VOZNESENKA 2020 HM2022009

This map is prepared for Kenai Peninsula Borough Assessing Dept. use only and is not intended for conveyance nor is it a survey.

Note- Assessor's block Numbers Shown in Ellipses  
Assessor's Parcel Numbers Shown in Circles