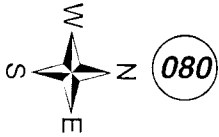


JANUARY 14, 2003

For 2003 assessment roll
Delete Add Revise

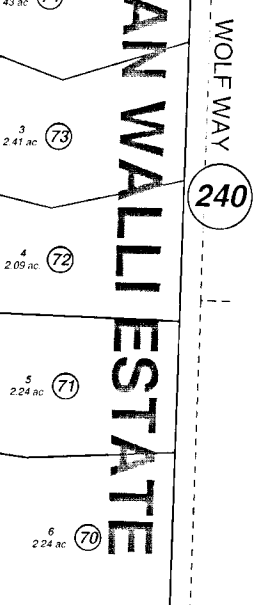
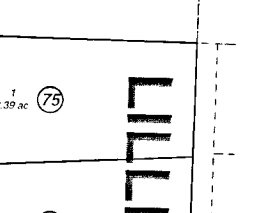
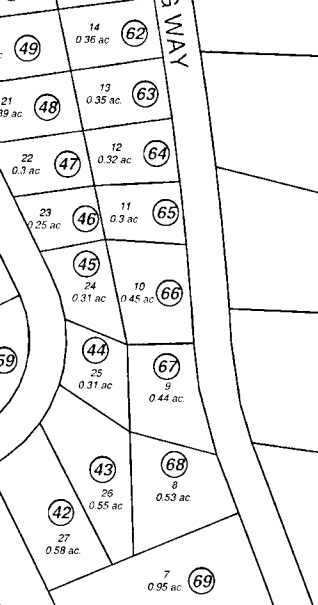
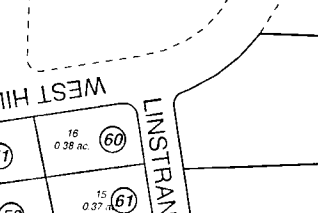
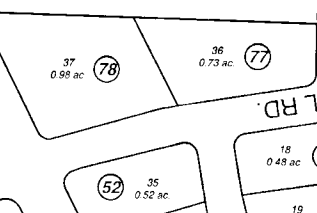
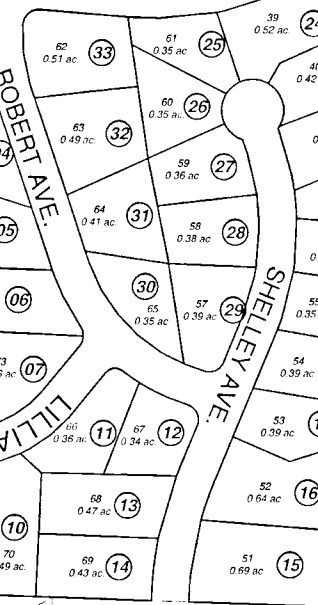
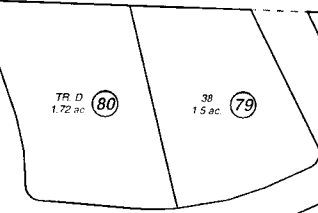
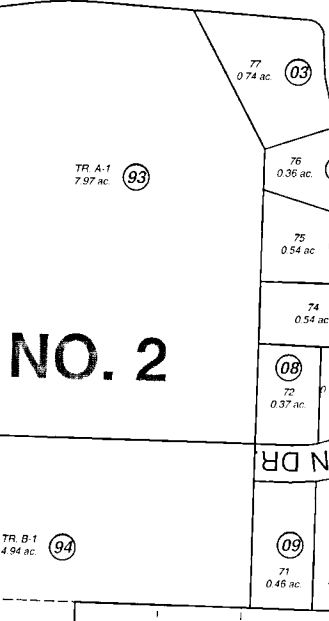
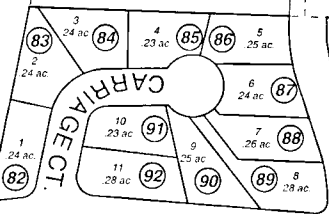
To
1,2 93,94



080

STERLING HWY

GOVT LOT 1



LILLIAN WALLI ESTATE

WOLF WAY 240

SOUND

SITKA ROSE CIR

Assessor's Map
Kenai Peninsula Borough

LILLIAN WALLI ESTATE HM0880016
LILLIAN WALLI ESTATE BAYBERRY HOLLOW ADDN HM2002052
LILLIAN WALLI ESTATE NO 2 HM2002092

Note- Assessor's block Numbers Shown in Elipses
Assessor's Parcel Numbers Shown in Circles

This map is prepared
for Kenai Peninsula
Borough Assessing Dept
use only and is not
intended for conveyance
nor is it a survey.