

S1/4 SEC. 16 & NW1/4 SEC. 21, T02S, R12W, S.M.

185-520

SIMEON ST.

SEISMOR

MATSON

SEISI

CHRISTOFFERSEN AVE.

MAROL

16

499

KV

DT

CHRISTOFFERSEN AVE.

SEISMOGRAPH RW

E

488

LAKE SUANNE
ESTATES
OLWELL RD.

INTS

CULHANE AVE.

COOPER AVE.



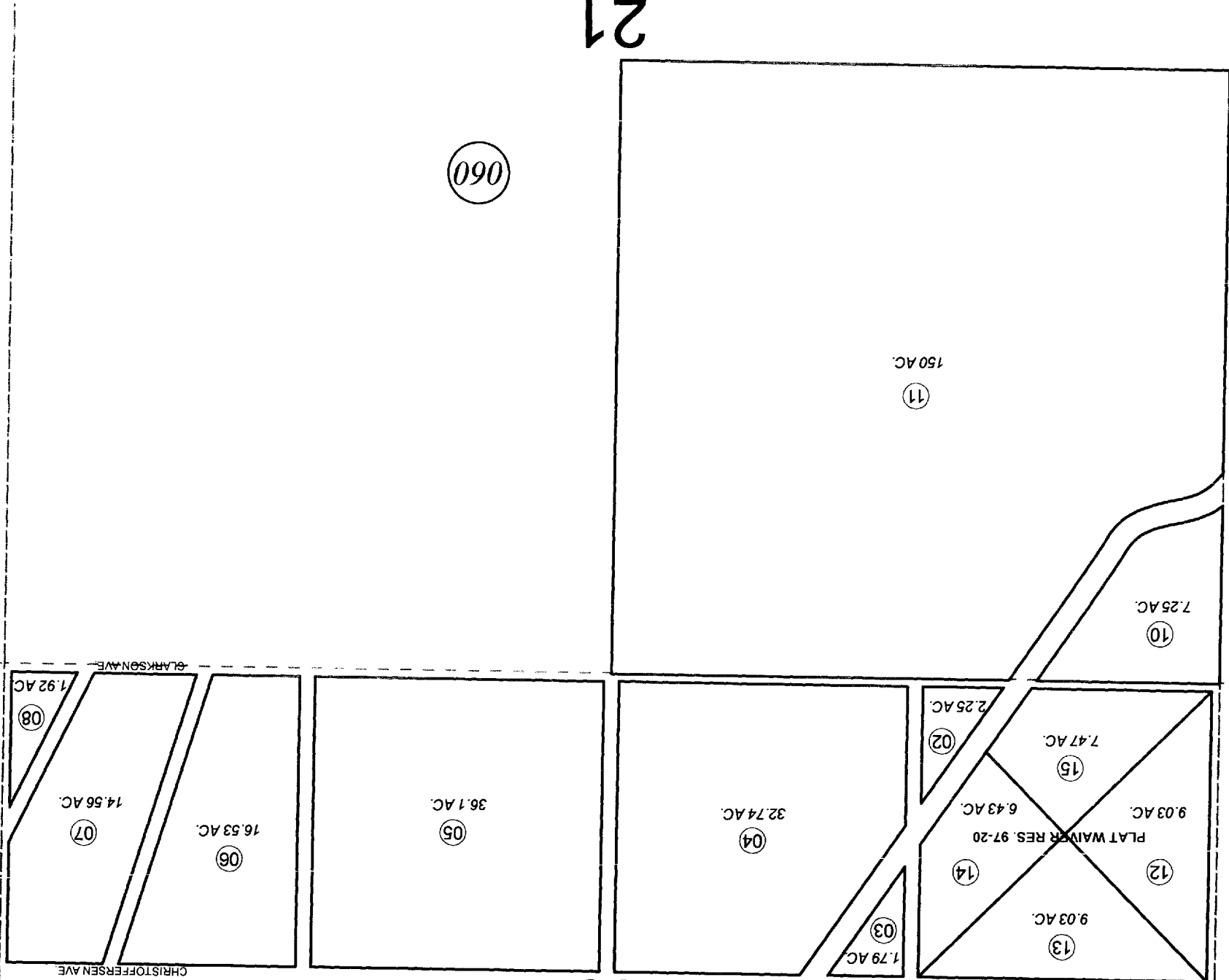
JANUARY 20, 2011

For 2011 assessment roll		
Delete	Add	Revise
03.04	06-08	(ACREAGE CHANGE)

Assessor's Map
Kenai Peninsula Borough

PLAT WAIVER RES 97-20 HM97-2246

This map is prepared for Kenai Peninsula Borough Assessing Dept. use only and is not intended for conveyance nor is it a survey. Note- Assessor's block Numbers Shown in Ellipses Assessor's Parcel Numbers Shown in Circles



21

060

521