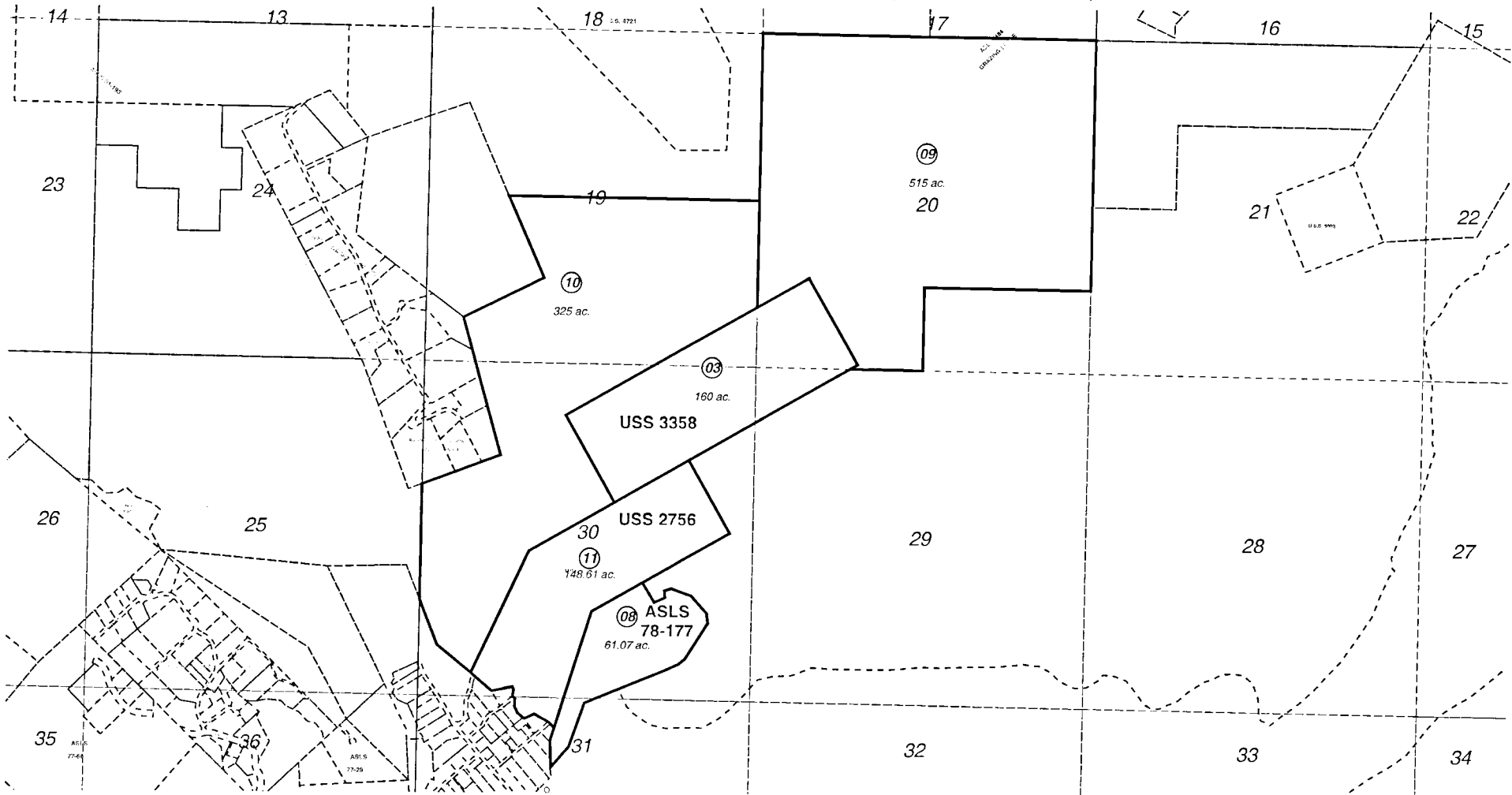


POR. SEC. 19,20,29-31, T04S, R10W & POR. SEC. 24,25, T04S R11W, S.M.

185-220



NOVEMBER 18, 2002

For 2003 assessment roll		
Delete	Add	Revise
To		
4	11	



Assessor's Map
Kenai Peninsula Borough

US SURVEY 2756 :HM0002756
 US SURVEY 3358 :HM0003358
 ALASKA STATE LAND SURVEY 78-177 :HM0800036

This map is prepared for Kenai Peninsula Borough Assessing Dept. use only and is not intended for conveyance nor is it a survey.
 Note- Assessor's block Numbers Shown in Ellipses
 Assessor's Parcel Numbers Shown in Circles