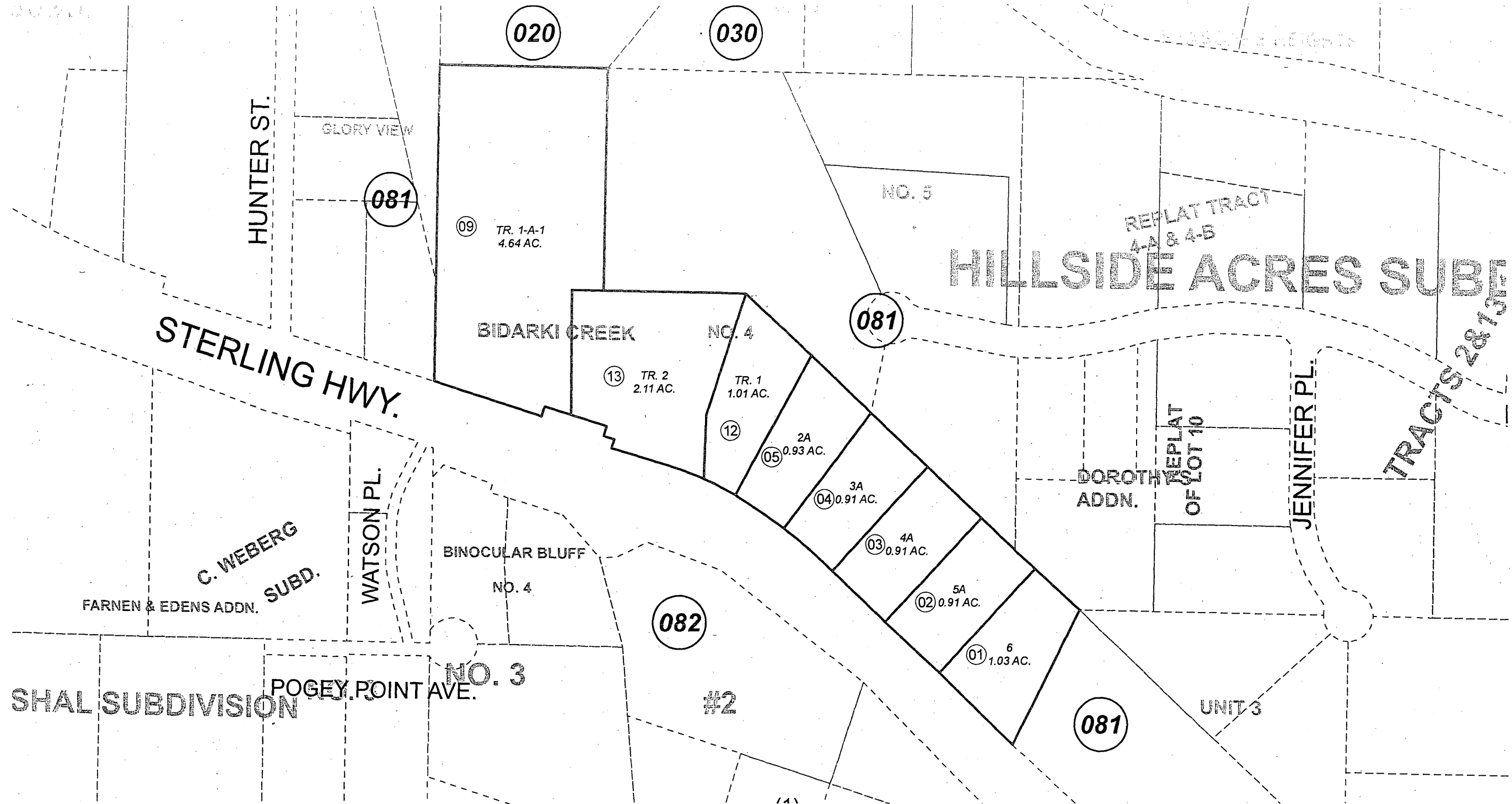


POR. SEC. 24, T06S, R14W, S.M.

175-250



AUGUST 21, 2012

For 2013 assessment roll		
Delete	Add	Revise
To		
10,11	12,13	

Assessor's Map  
Kenai Peninsula Borough

BIDARKI CREEK SUB HM0730081  
BIDARKI CREEK SUB NO 3 HM2007106  
BIDARKI CREEK NO 4 HM2012027

This map is prepared for Kenai Peninsula Borough Assessing Dept. use only and is not intended for conveyance nor is it a survey.  
Note- Assessor's block Numbers Shown in Ellipses.  
Assessor's Parcel Numbers Shown in Circles