

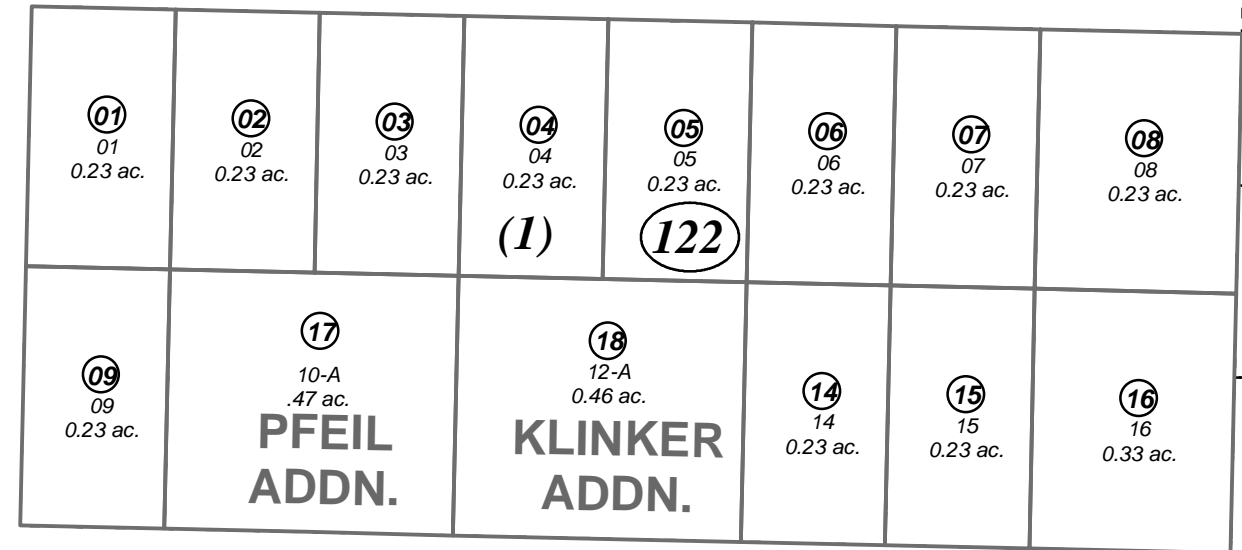
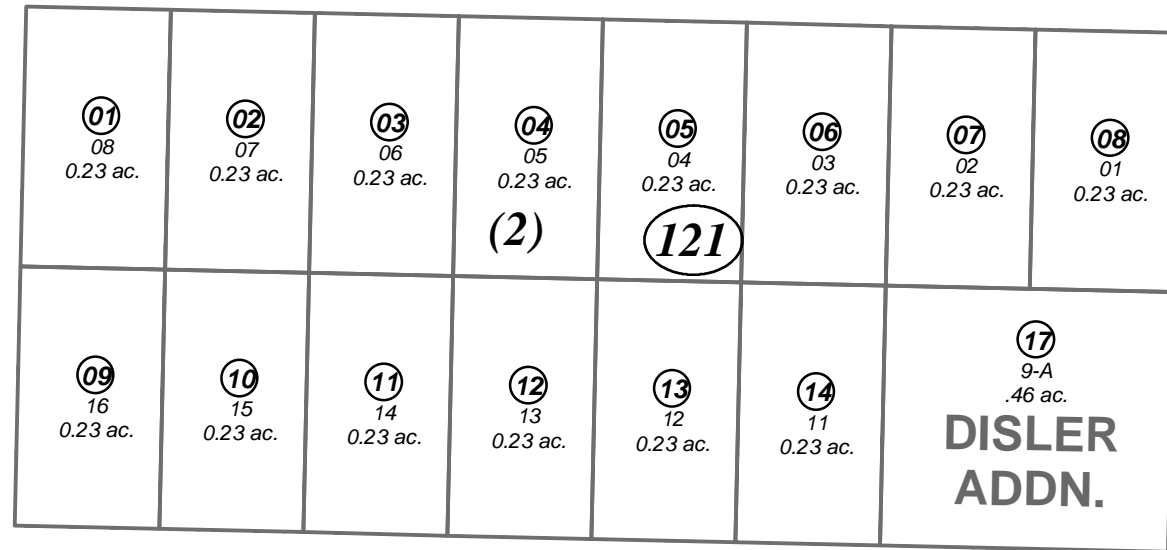
S1/2 NW1/4 NE1/4 SEC. 19, T06S, R13W, S.M.

175-120

110

SOUNDVIEW AVE

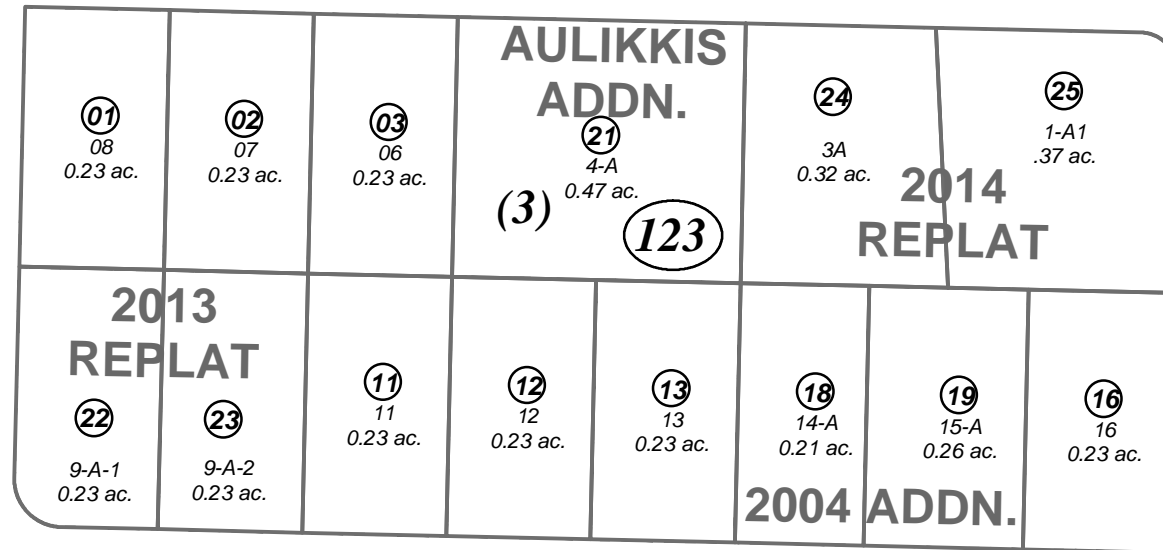
WRIGHT ST



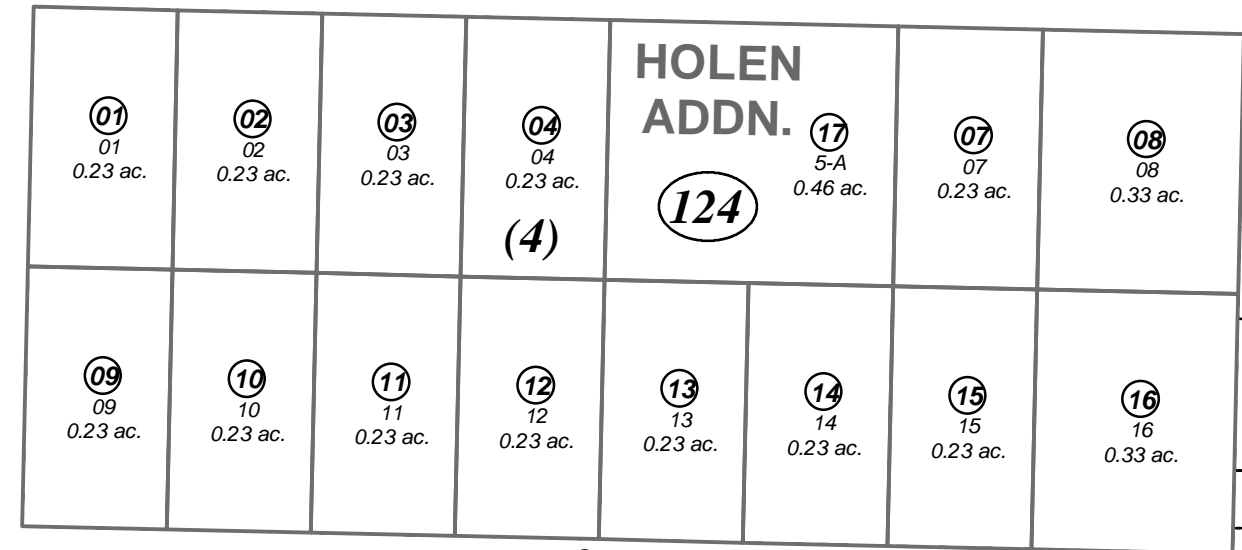
NOVIEW AVE

MULLIKIN ST

100



130



SPRUCEVIEW AVE

HARRINGTON HEIGHTS SUBD.

NOVEMBER 7, 2014

For 2015 assessment roll

Delete Add Revise

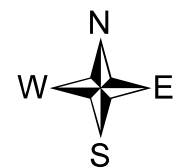
To

12306, 12317, 12324, 12325

Assessor's Map
Kenai Peninsula Borough

- HARRINGTON HEIGHTS SUB HM0640626
- HARRINGTON HEIGHTS SUB PFEIL ADDN HM2002033
- HARRINGTON HEIGHTS SUB KLINKER ADDN HM2002046
- HARRINGTON HEIGHTS SUB DISLER ADDN HM2002065
- HARRINGTON HEIGHTS SUB BERGMAN ADDN HM2002066
- HARRINGTON HEIGHTS SUB HOLEN ADDN HM2004028
- HARRINGTON HEIGHTS SUB 2004 ADDN HM2005023
- HARRINGTON HEIGHTS SUB 2009 HM2009022
- HARRINGTON HEIGHTS SUB AULIKKIS ADDN HM2009052
- HARRINGTON HEIGHTS 2013 REPLAT HM2013044
- HARRINGTON HEIGHTS 2014 REPLAT HM2014026

100



0 50 100 Feet

This map is prepared for Kenai Peninsula Borough Assessing Dept. use only and is not intended for conveyance nor is it a survey.

Note- Assessor's block Numbers Shown in Ellipses
Assessor's Parcel Numbers Shown in Circles