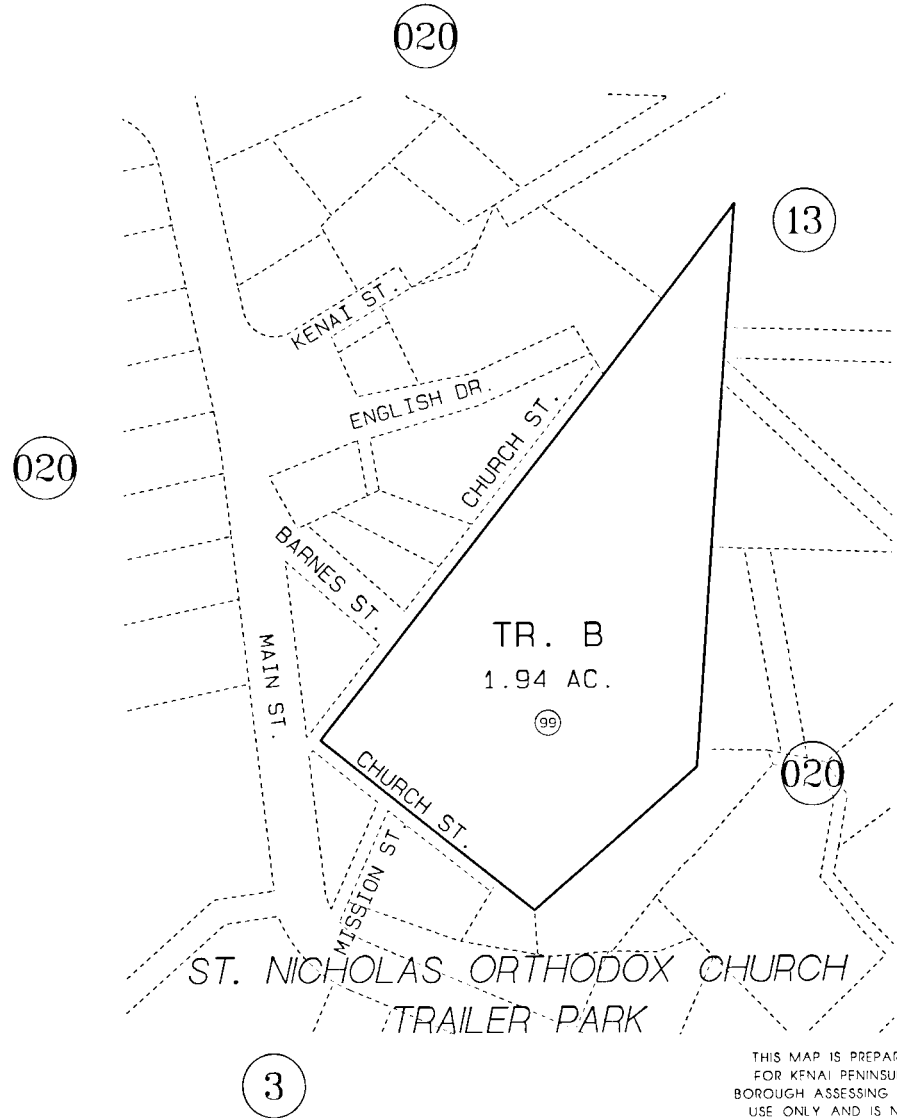


PORTION OF SEC. 31, T8S, R14W, SEWARD MERIDIAN

192-027

- (O1) SPACE O1
- (O2) SPACE O2
- (O3) SPACE O3
- (O4) SPACE O4
- (O5) SPACE O5
- (O6) SPACE O6



ST. NICHOLAS ORTHODOX CHURCH
TRAILER PARK



DATE: FEB. 10, 1997

FOR 1997 ASSESSMENT ROLL		
DELETE	ADD	REVISED
TO		NEW PAGE

Assessor's Map
Kenai Peninsula Borough

THIS MAP IS PREPARED FOR KENAI PENINSULA BOROUGH ASSESSING DEPT USE ONLY AND IS NOT INTENDED FOR ANY OTHER USE OR REPRESENTATION

NOTE - Assessor's Block Numbers Shown In Ellipses
Assessor's Parcel Numbers Shown In Circles