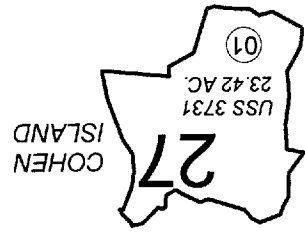


POR. T07S, R12W, R13W, S.M.

193-290

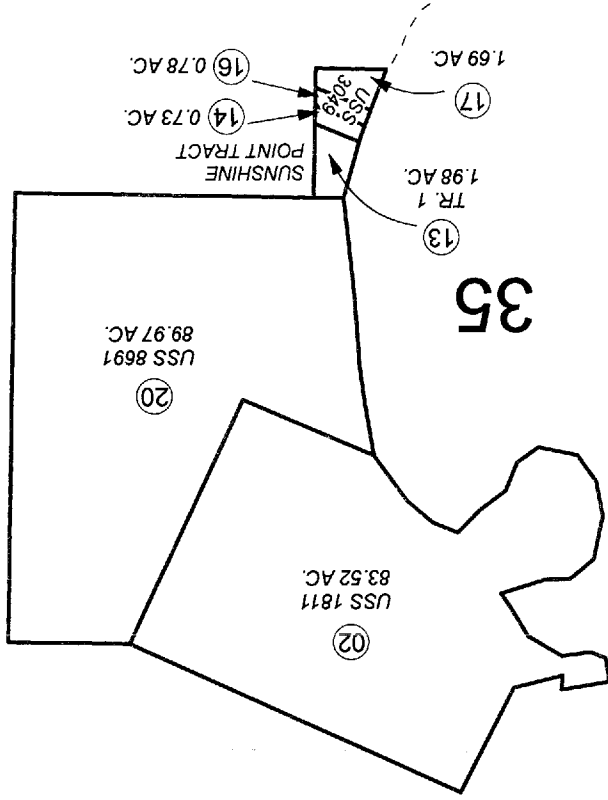


ELDRED PASSAGE

34

26

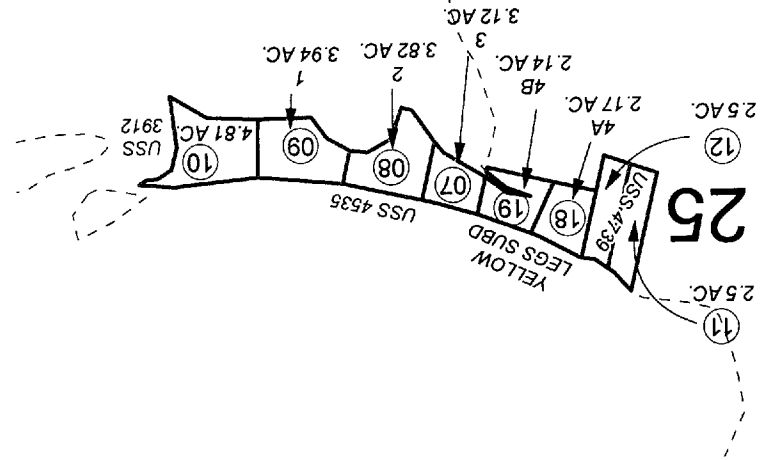
21  
TR. D  
2.17 AC.



35

102

36



25

04  
USS 4534  
5 AC.

For 2011 assessment roll		
Delete	Add	Revise
To		
21		

OCTOBER 13, 2010



Assessor's Map  
Kenai Peninsula Borough

YELLOW LEGS SUB SL0810001  
SUNSHINE POINT TRACT SL0810007

This map is prepared for Kenai Peninsula Borough Assessing Dept. use only and is not intended for conveyance nor is it a survey. Note- Assessor's block Numbers Shown in Ellipses and Assessor's Parcel Numbers Shown in Circles