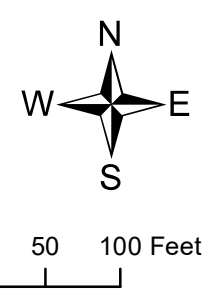
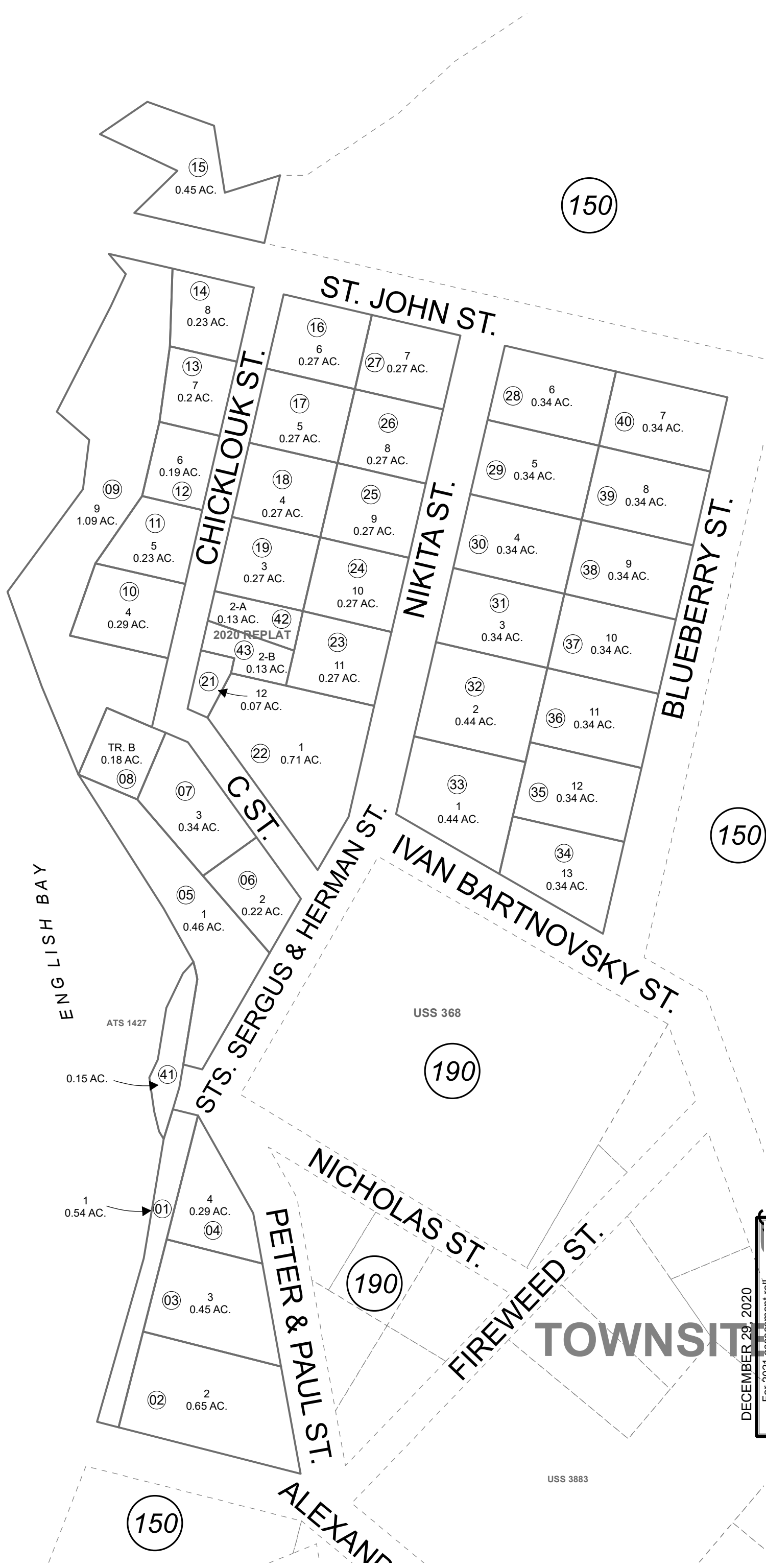


POR. SEC. 35, T09S, R16W, S.M.

191-200



DECEMBER 29, 2020	
For 2021 assessment roll	
Delete	Revise
Add	
To	42,43
20	

This map is prepared for Kenai Peninsula Borough Assessing Dept. use only and is not intended for conveyance nor is it a survey.

Note- Assessor's block Numbers Shown in Ellipses  
Assessor's Parcel Numbers Shown in Circles

USS 0368 SL0000368  
USS 4901 SL0004901  
ALASKA TIDELANDS SURVEY NO. 1427 SL0930002  
USS 4901 TRACT A BLOCK 2 LOT 2 2020 REPLAT SL2020004

Assessor's Map  
Kenai Peninsula Borough