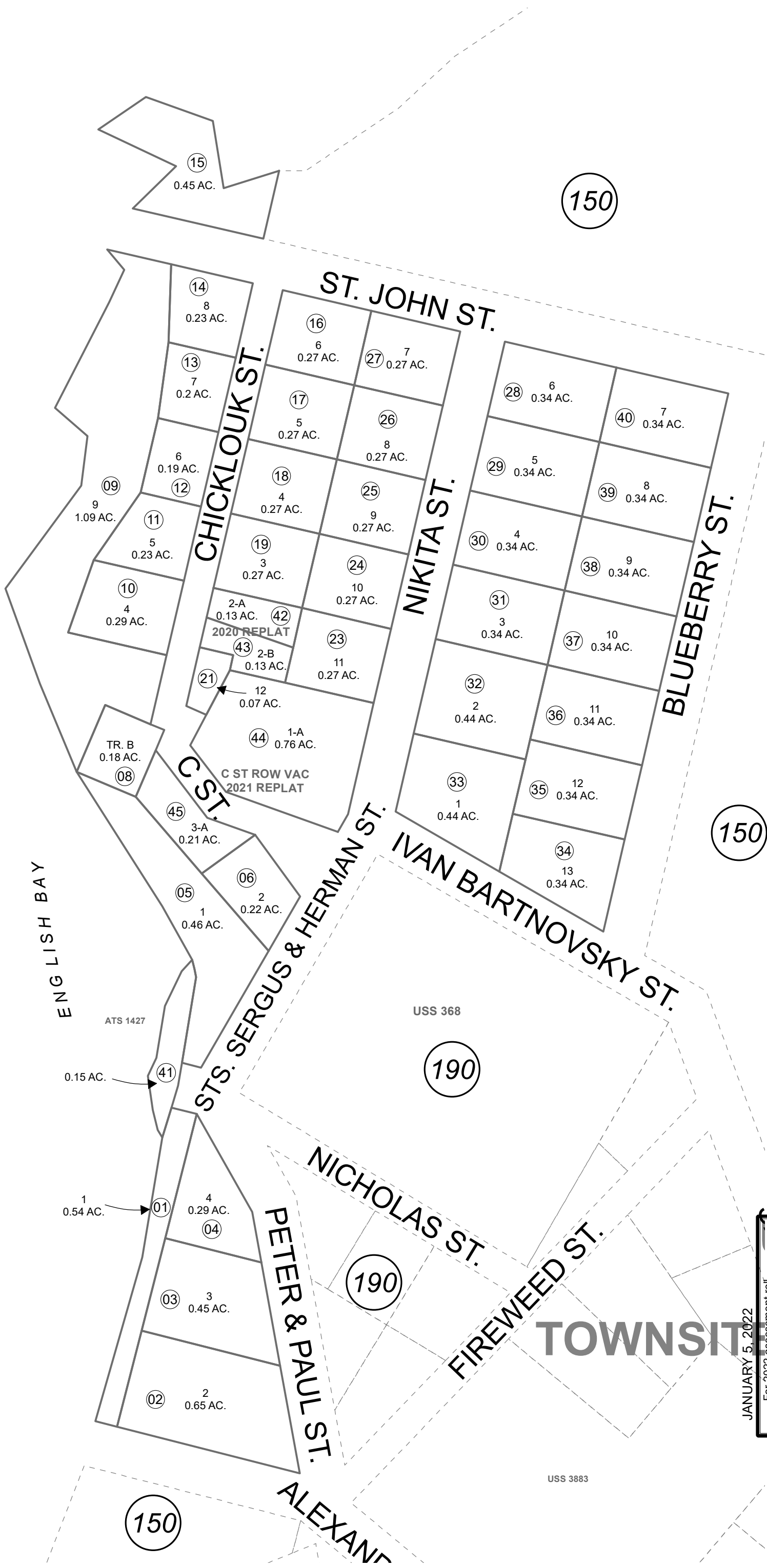


POR. SEC. 35, T09S, R16W, S.M.

191-200



0 50 100 Feet

For 2022 assessment roll	
Delete	Revise
07,22	44,45

JANUARY 5, 2022

TOWNSHIP

This map is prepared for Kenai Peninsula Borough Assessing Dept. use only and is not intended for conveyance nor is it a survey.

Note- Assessor's block Numbers Shown in Ellipses
Assessor's Parcel Numbers Shown in Circles

USS 0368 SL0000368
 USS 4901 SL0004901
 ALASKA TIDELANDS SURVEY NO. 1427 SL0930002
 USS 4901 TRACT A BLOCK 2 LOT 2 2020 REPLAT SL2020004
 USS 4901 C STREET ROW VACATION 2021 REPLAT SL2021004

Assessor's Map
Kenai Peninsula Borough