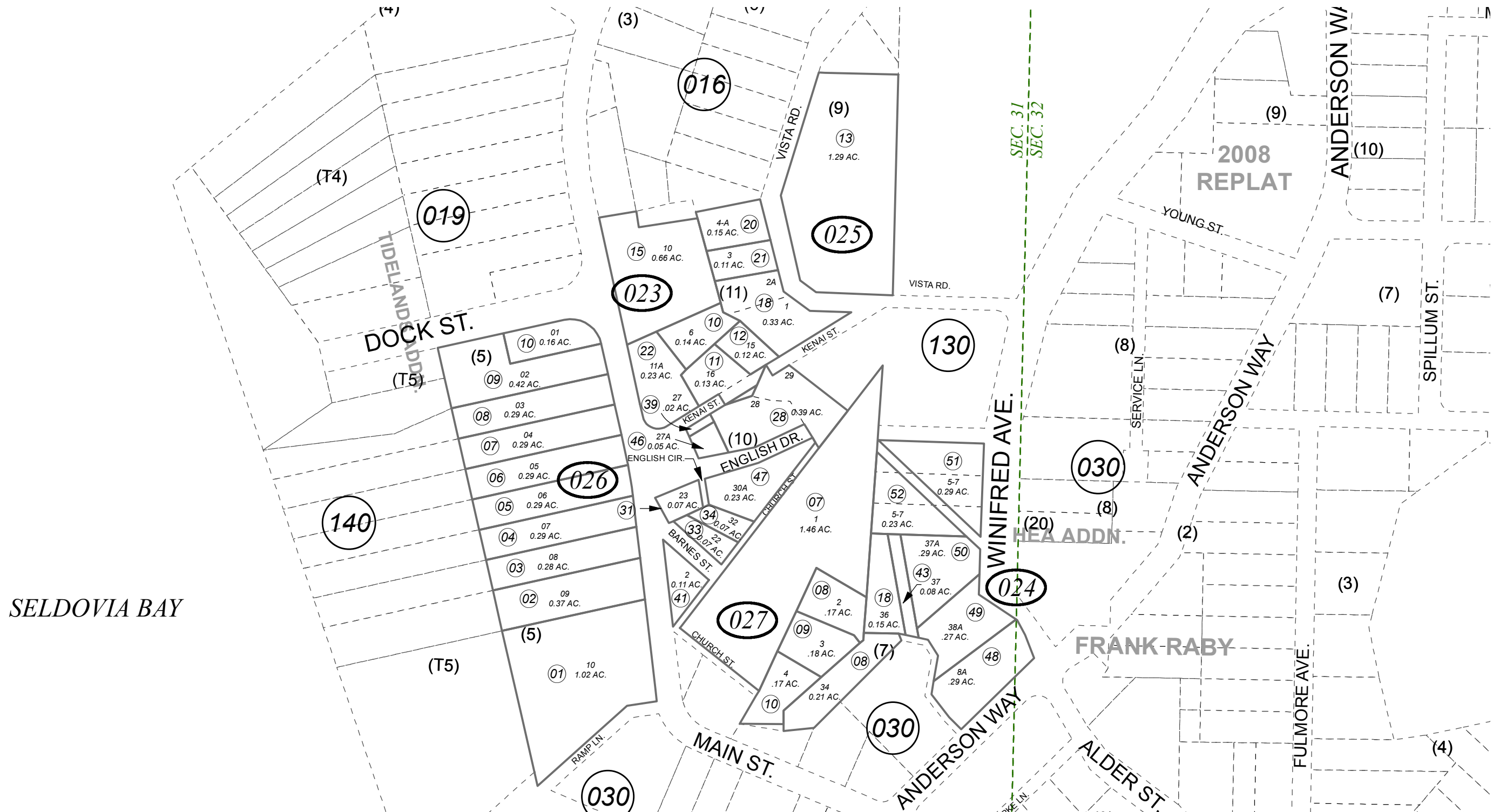


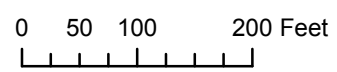
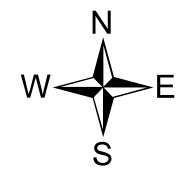
POR. SEC. 31 & 32, T08S, R14W, S.M.

192-020



SELDOVIA BAY

FRANK RABY



JANUARY 25, 2019

For 2019 assessment roll		
Delete	Add	Revise
	To	
02799	02707- 02710	02318
(ACREAGE CORRECTION)		

Assessor's Map
Kenai Peninsula Borough

US SURVEY 371 □ SL0000371
 SELDOVIA TOWNSITE - U S SURVEY 1771 □ SL0001771
 SELDOVIA TOWNSITE US SURVEY 2160 □ SL0002160
 WATERFRONT RESUB NO 1 □ SL0670030
 SELDOVIA TOWNSITE - US SURVEY 1771 □ SL0730128
 WATERFRONT SUB NO 5 □ SL0810010
 SELDOVIA TOWNSITE 2005 REPLAT □ SL2005001
 WATERFRONT RESUB NO 1 GILICK REPLAT SL2006004
 TOWNSITE OF SELDOVIA 2018 ADDITION SL2018010

Note- Assessor's block Numbers Shown in Ellipses
 Assessor's Parcel Numbers Shown in Circles

This map is prepared for Kenai Peninsula Borough Assessing Dept. use only and is not intended for conveyance nor is it a survey.