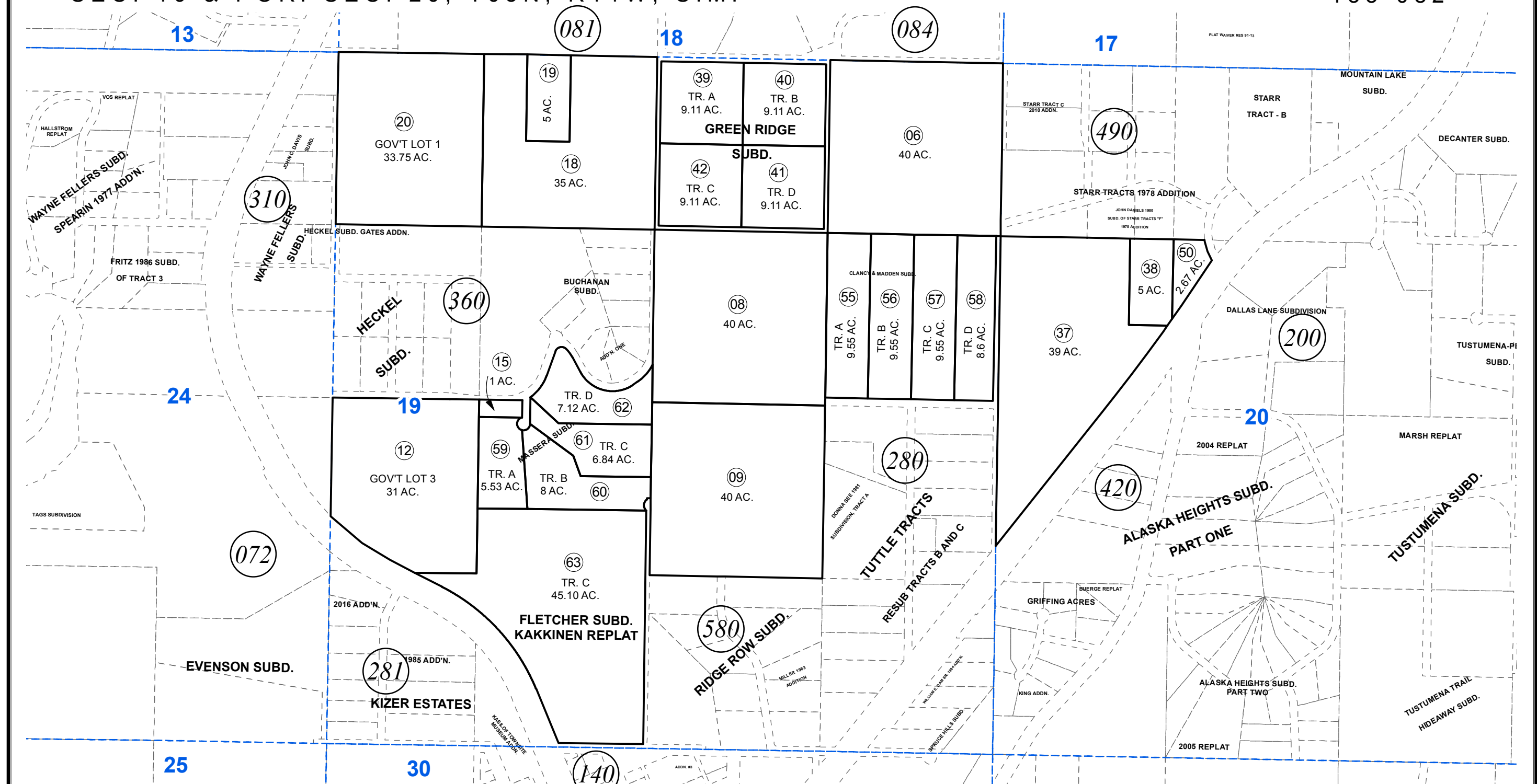


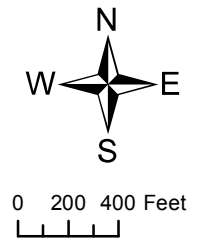
SEC. 19 & POR. SEC. 20, T03N, R11W, S.M.

133-082



MAY 25, 2017

For 2018 assessment roll		
Delete	Add	Revise
To		
47,51,52	63	



Assessor's Map
Kenai Peninsula Borough

GREENRIDGE SUB KN0770021
 FLETCHER SUB & REPLAT OF FLETCHER TR A KN0770088
 FLETCHER SUB NO 3 KN0840236
 CLANCY & MADDEN KN0000014
 MASSERA SUB KN2015092
 FLETCHER SUB HAKKINEN REPLAT KN2017023

This map is prepared for Kenai Peninsula Borough Assessing Dept. use only and is not intended for conveyance nor is it a survey.
 Note- Assessor's block Numbers Shown in Ellipses
 Assessor's Parcel Numbers Shown in Circles