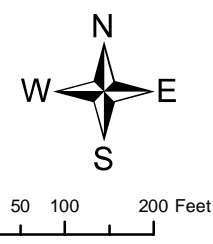
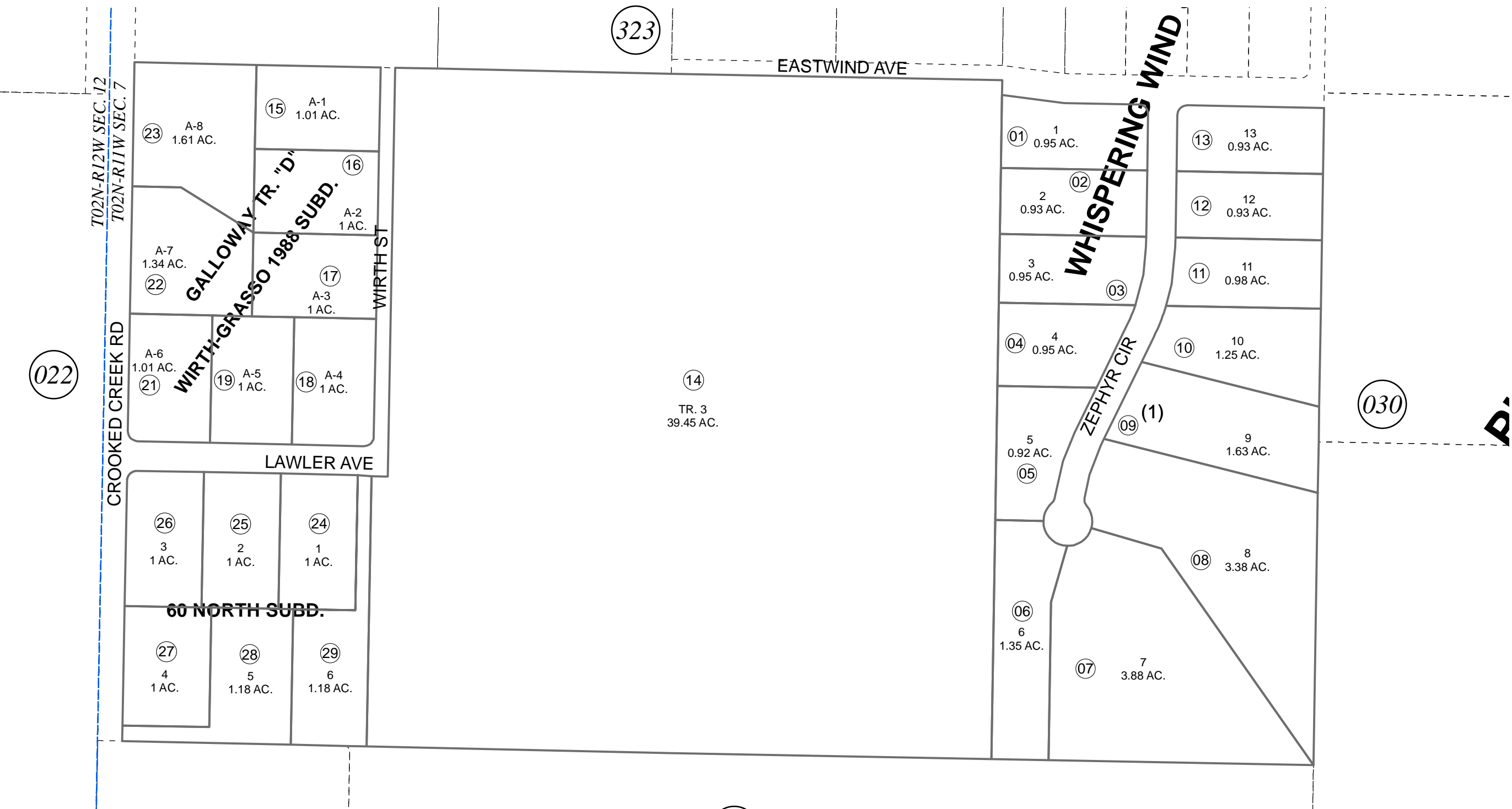


POR. NW1/4 SEC. 7, T02N, R11W, S.M.

137-324



AUGUST 7, 2013

For 2014 assessment roll		
Delete	Add	Revise
	To	
20	24-29	

Assessor's Map  
Kenai Peninsula Borough

RONALD JACK GROSSL SUB KN0730005  
WHISPERING WIND SUB KN0880026  
GALLOWAY SUB TRACT A KN0880049  
60 NORTH SUB KN2013049

This map is prepared for Kenai Peninsula Borough Assessing Dept. use only and is not intended for conveyance nor is it a survey.  
Note- Assessor's block Numbers Shown in Elipses  
Assessor's Parcel Numbers Shown in Circles