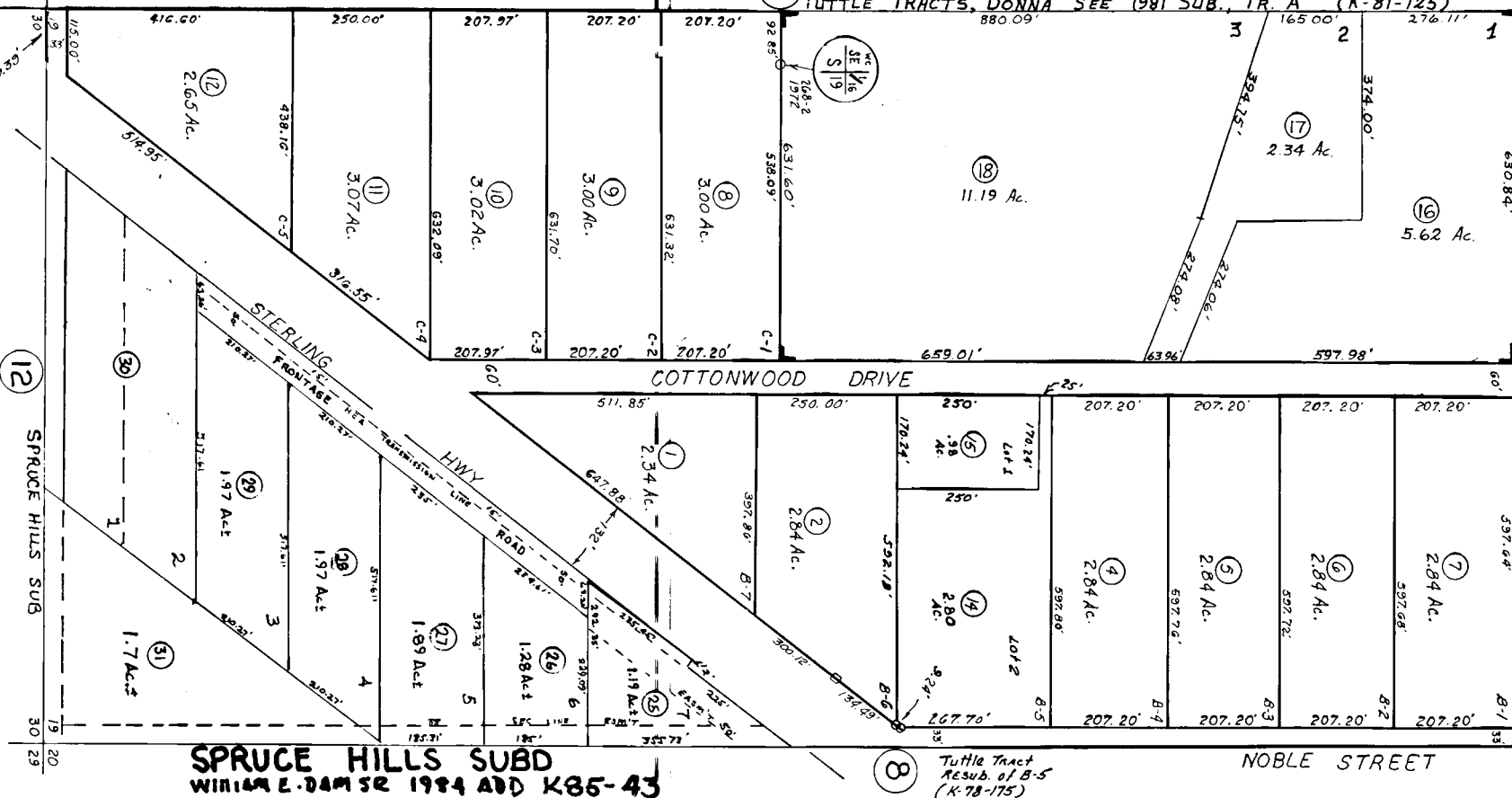


FIRST AVE.
U.S.S. NO. 3554
TOWNSITE OF
KASLOF



**RESUBDIVISION OF TUTTLE SUB.
 K74-97 11-7-74 TRACTS B AND C
 Kenai Peninsula Borough, Alaska**

NOTE - Assessor's Block Numbers Shown in Ellipses
 Assessor's Parcel Numbers Shown in Circles