

SEC. 1,2,11,12, T03N, R12W, S.M.

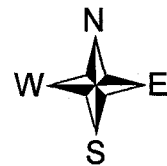
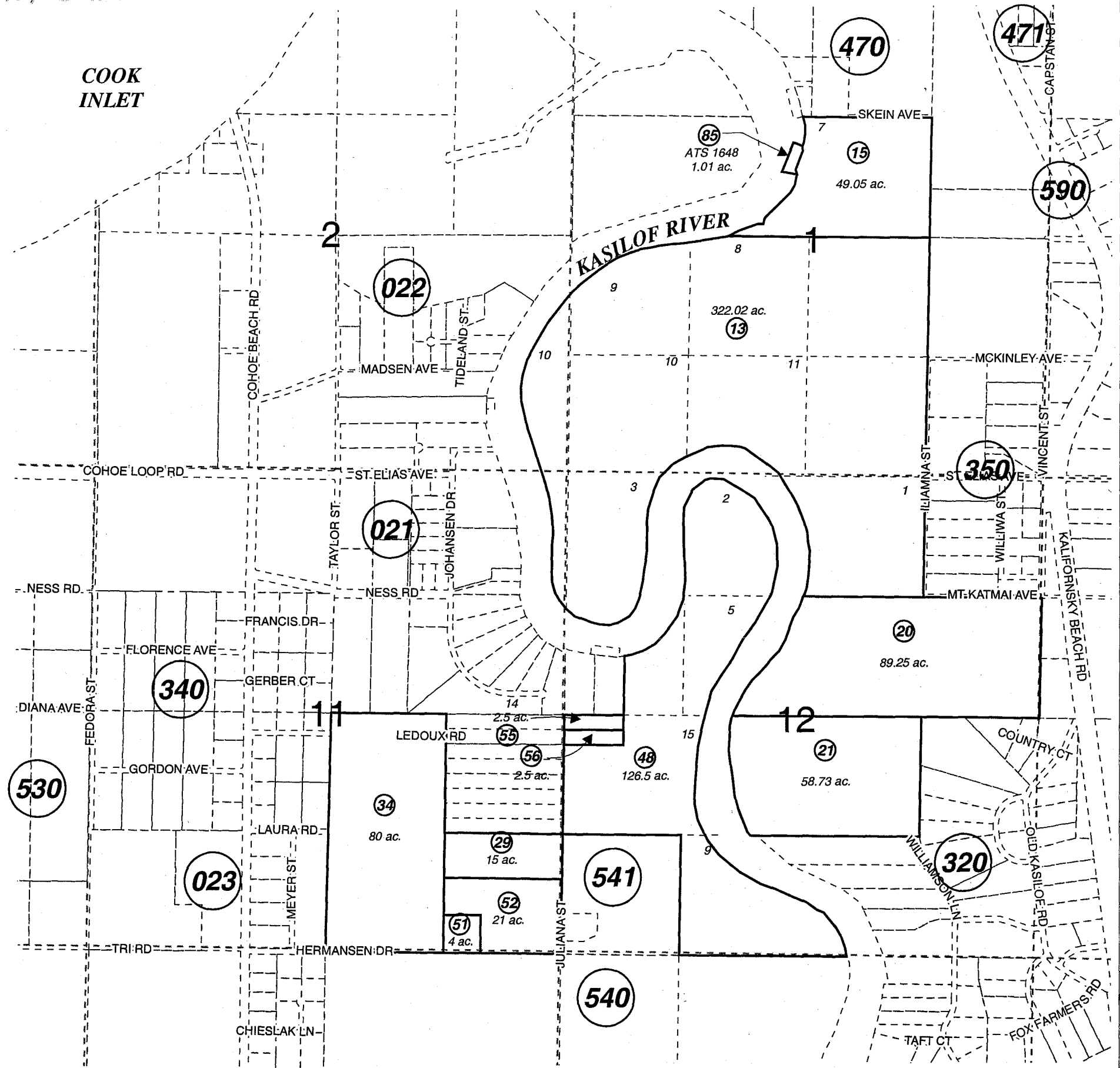
133-020

This map is prepared for Kenai Peninsula Borough Assessing Dept. use only and is not intended for conveyance nor is it a survey.

Note- Assessor's block Numbers Shown in Elipses
Assessor's Parcel Numbers Shown in Circles

Assessor's Map
Kenai Peninsula Borough

ALASKA TIDELANDS SURVEY NO 1648 KN2005041



NOVEMBER 3, 2005

For 2006 assessment roll

Delete	Add	Revise
	85	

To

85