

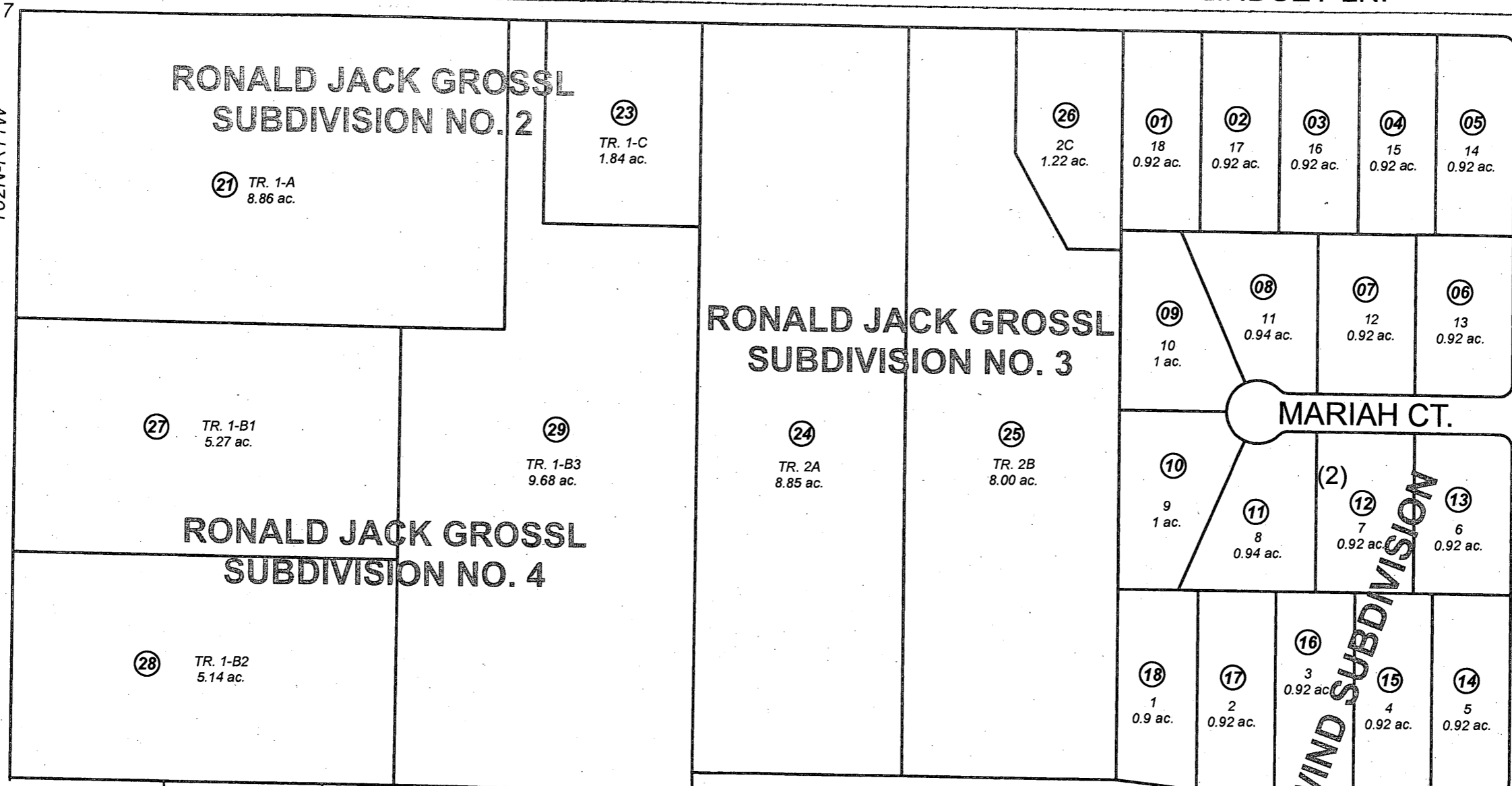
030

LINDSEY LN.

T02N-R12W
T02N-R11W

020

CROOKED CREEK RD.



030

WHISPER HOLLOW ST.

EASTWIND AVE.

324

324



JUNE 25, 2012

For 2013 assessment roll		
Delete	Add	Revise
To		
22	27-29	

Assessor's Map
Kenai Peninsula Borough

RONALD JACK GROSSL SUB KN0730005
 WHISPERING WIND SUB KN0880026
 RONALD JACK GROSSL SUB NO 2 KN0940067
 RONALD JACK GROSSL SUB NO 3 KN2002111
 RONALD JACK GROSSL SUB NO 4 KN2012022

This map is prepared for Kenai Peninsula Borough Assessing Dept. use only and is not intended for conveyance nor is it a survey.
 Note- Assessor's block Numbers Shown in Elipses
 Assessor's Parcel Numbers Shown in Circles