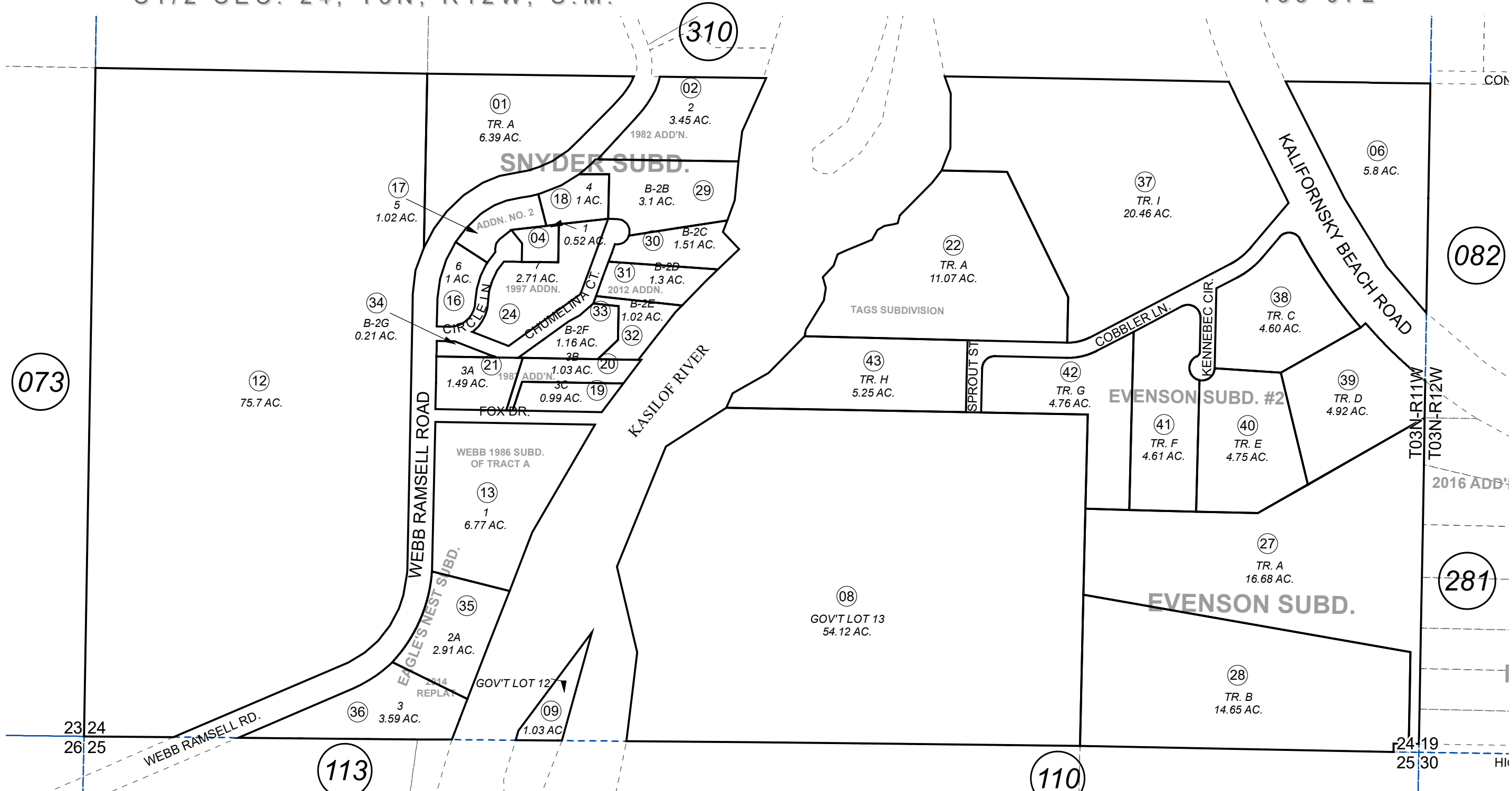


S 1/2 SEC. 24, T3N, R12W, S.M.

133-072



073

082

113

110

281



0 125 250 500 Feet

DECEMBER 11, 2018

For 2019 assessment roll		
Delete	Add	Revise
	To	
26	37-43	

Assessor's Map
Kenai Peninsula Borough

- SNYDER SUB □ KN0001782
- SNYDER SUB 1982 ADDN □ KN0840263
- EAGLES NEST SUB WEBB 1986 SUB OF TRACT A □ KN0860091
- SNYDER SUB 1987 ADDN NO 2 □ KN0870119
- SNYDER SUB 1987 ADDN □ KN0880007
- TAGS SUB □ KN0940008
- SNYDER SUB 1997 ADDN □ KN0970084
- EVENSON SUB □ KN2007117
- SNYDER SUB 2012 ADDN KN2013016
- EAGLES NEST SUB 2014 REPLAT KN2014028
- EVENSON SUB #2 KN2018068

This map is prepared for Kenai Peninsula Borough Assessing Dept. use only and is not intended for conveyance nor is it a survey.

Note- Assessor's block Numbers Shown in Ellipses
Assessor's Parcel Numbers Shown in Circles