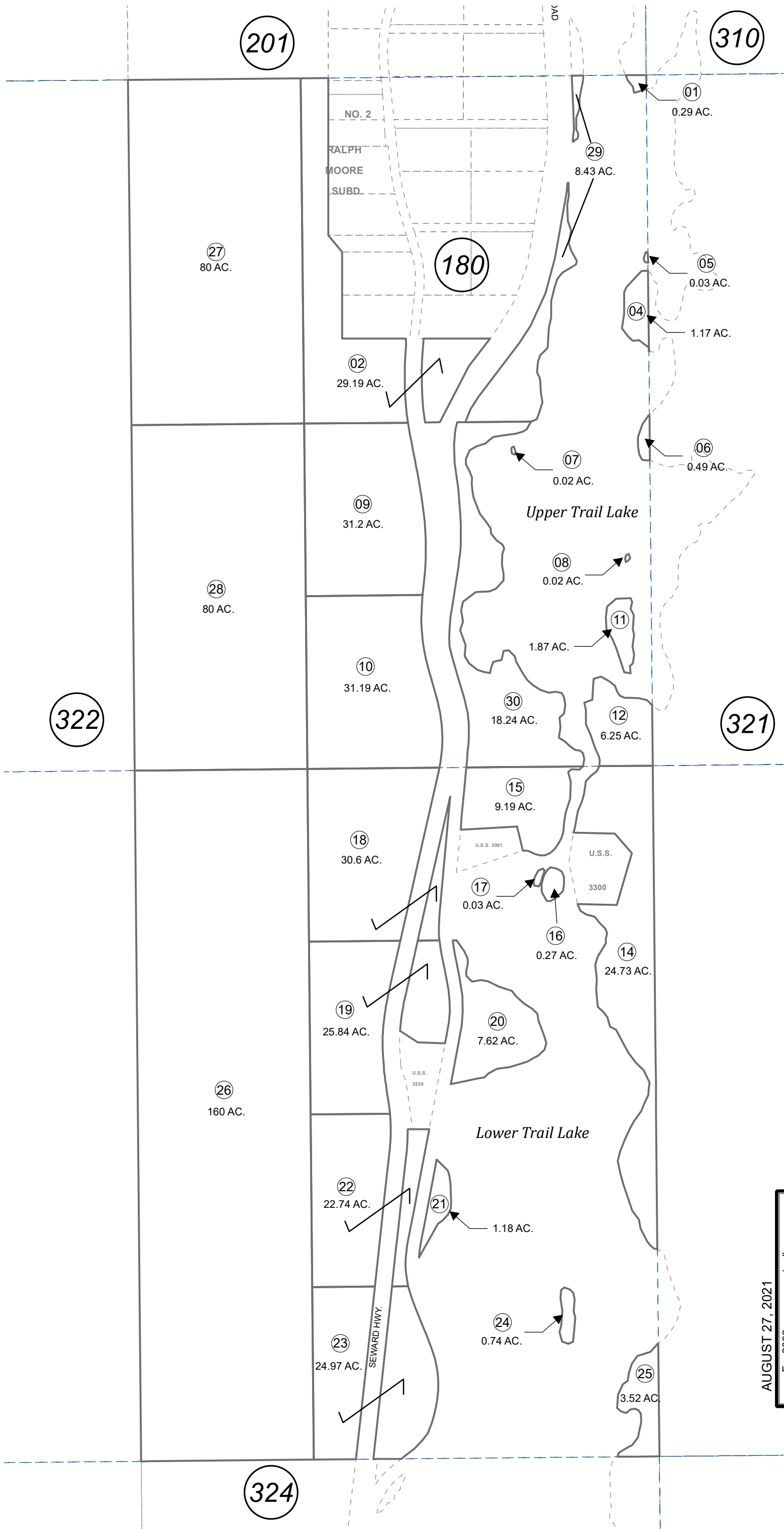


SEC. 1 & 12, T04N, R01W, S.M.

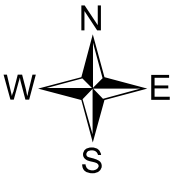
125-323



This map is prepared for Kenai Peninsula Borough Assessing Dept. use only and is not intended for conveyance nor is it a survey.

Note- Assessor's block Numbers Shown in Ellipses Assessor's Parcel Numbers Shown in Circles

Assessor's Map Kenai Peninsula Borough



AUGUST 27, 2021

For 2022 assessment roll	
Delete	Add
	Revise
To	
<b>UPDATE TAX PAGE</b>	