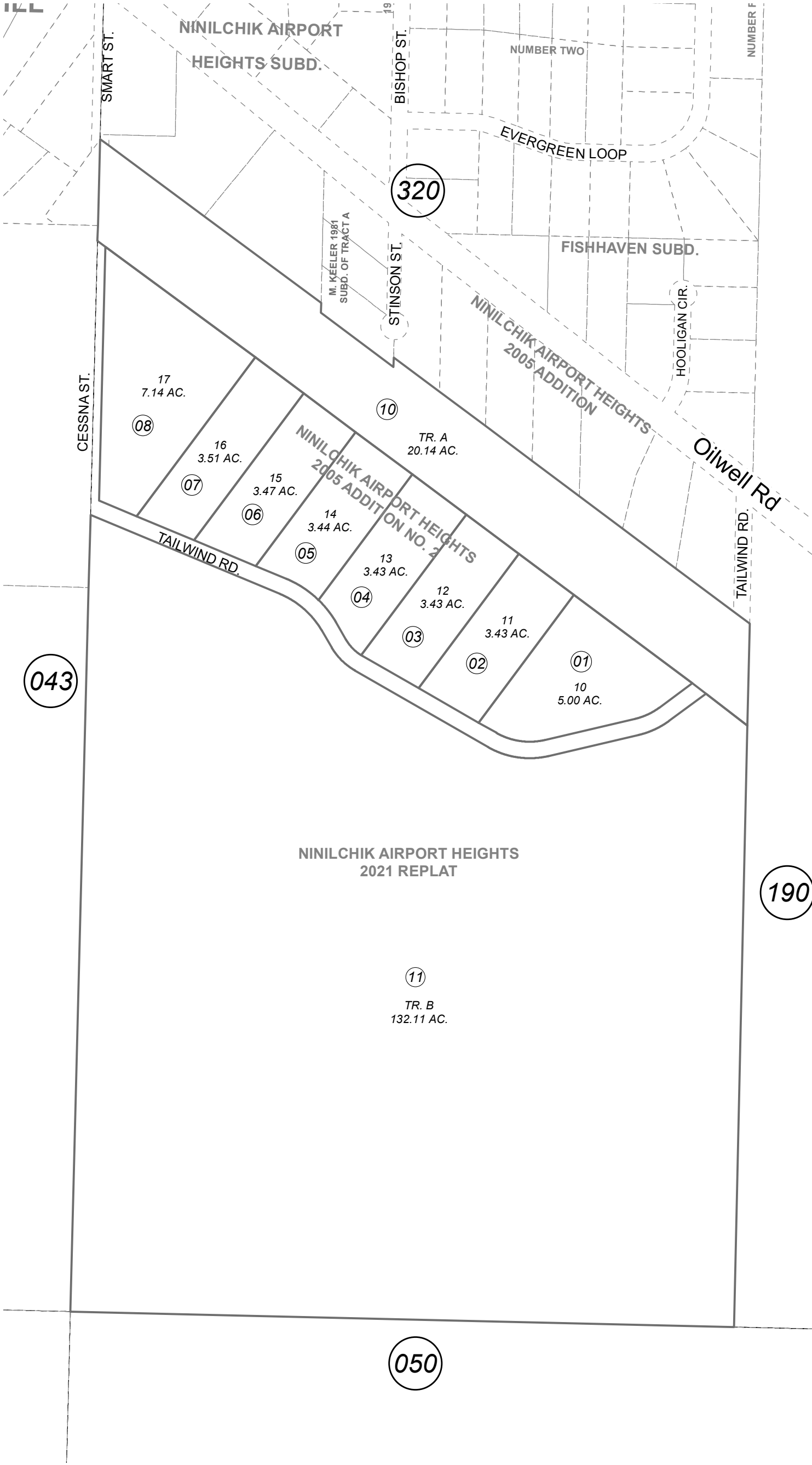


POR. SEC. 7, T02S, R13W, S.M.

185-321



0 100 200 400 Feet

NOVEMBER 10, 2021

For 2022 assessment roll	
Delete	Add
	Revise
To	
09	10,11

This map is prepared for Kenai Peninsula Borough Assessing Dept. use only and is not intended for conveyance nor is it a survey.

Note- Assessor's block Numbers Shown in Ellipses Assessor's Parcel Numbers Shown in Circles

NINILCHIK AIRPORT HEIGHTS SUB 2005 ADDN NO 2 HM2006011
 NINILCHIK AIRPORT HEIGHTS 2021 REPLAT HM2021049

Assessor's Map
 Kenai Peninsula Borough